

Operator
Telephone
Fax
e-Mail

SITECO 5XA5132E1B08A4 DL® 30 LED / Luminaire Data Sheet

Luminous emittance 1:



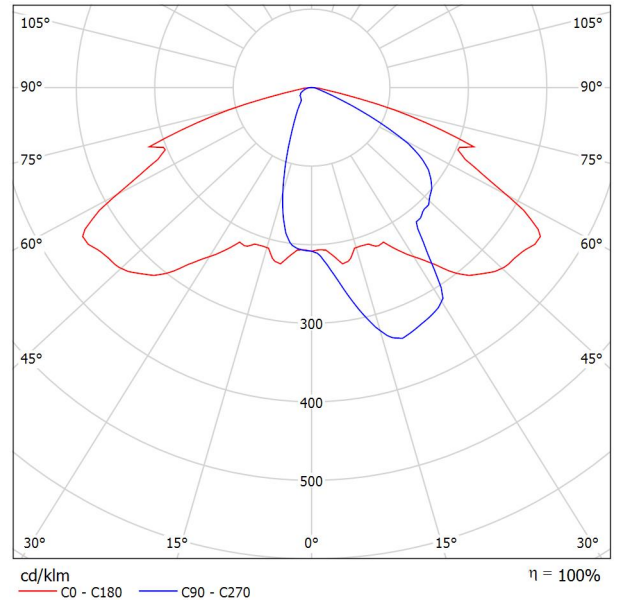
Luminaire classification according to CIE: 100
CIE flux code: 33 71 96 100 100

5XA5132E1B08A4

DL® 30 LED, mast luminaire, primary light control with 3 zone faceted reflector, of plastic, silver coated, highly specular, primary optical cover: cover, of PMMA, structured, transparent, light distribution: ST1.2a, light emission: direct distribution, primary light characteristic: asymmetric, installation type: post-top, LED High Power LED, rated luminous flux: 2.400 lm, light colour: 830, colour temperature: 3000K, control gear: ECG Plus, control: overheat protection, flexible luminous flux parameterisation, time-dependent luminous flux control, digital communication interface, power reduction, optimised constant luminous flux control (CLO 2.0), electronic power reduction, mains connection: 220..240V, AC, 50/60Hz, start of lifetime: 23 W, end of lifetime: 23 W, reduction: 11 W, luminaire housing, of diecast aluminium, powder-coated, Siteco® metallic grey (DB 702S), length: 600 mm, width: 510 mm, height: 290mm, spigot size: d x l = 76 x 100mm (post-top) | with reducer (optional accessory) 60 x 100mm, protection rating (complete): IP66, insulation class (complete): insulation class II (safety insulation), certification: CE, ENEC, VDE, impact resistance: IK08, standard-compliant lighting for roads and squares, packaging unit: 1 piece

Light Distribution: ST1.2a

Test report number: 57201



Due to missing symmetry properties, no UGR table can be displayed for this luminaire.



Operator
Telephone
Fax
e-Mail

Street 1 / Planning data

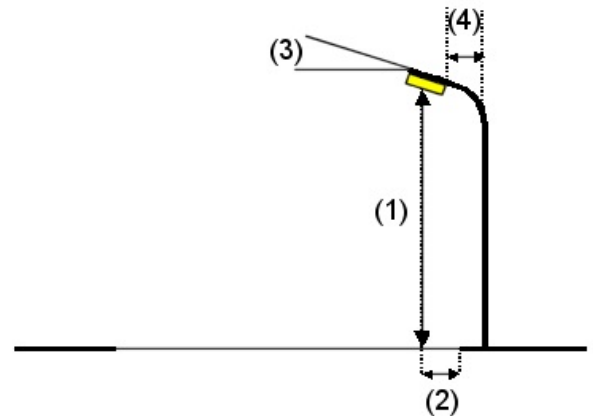
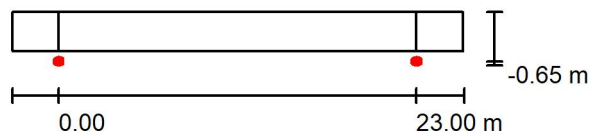
Street Profile

Sidewalk 1

(Width: 2.500 m)

Light loss factor: 0.67

Luminaire Arrangements



Luminaire: SITECO 5XA5132E1B08A4 DL® 30 LED
 Luminous flux (Luminaire): 2400 lm
 Luminous flux (Lamps): 2400 lm
 Luminaire Wattage: 22.5 W
 Arrangement: Single row, bottom
 Pole Distance: 23.000 m
 Mounting Height (1): 4.000 m
 Height: 4.257 m
 Overhang (2): -0.650 m
 Boom Angle (3): 0.0 °
 Boom Length (4): 0.000 m

Maximum luminous intensities

at 70°: 607 cd/klm

at 80°: 49 cd/klm

at 90°: 0.00 cd/klm

Any direction forming the specified angle from the downward vertical, with the luminaire installed for use.

No luminous intensities above 90°.

Arrangement complies with luminous intensity class G3.

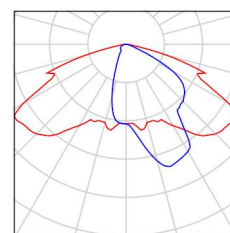
Arrangement complies with glare index class D.6.



Operator
Telephone
Fax
e-Mail

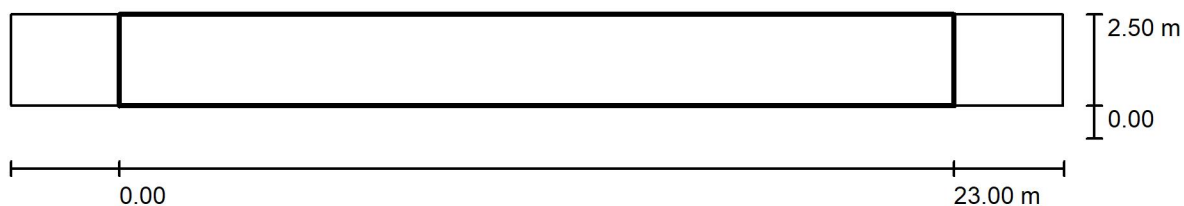
Street 1 / Luminaire parts list

SITECO 5XA5132E1B08A4 DL® 30 LED
Article No.: 5XA5132E1B08A4
Luminous flux (Luminaire): 2400 lm
Luminous flux (Lamps): 2400 lm
Luminaire Wattage: 22.5 W
Luminaire classification according to CIE: 100
CIE flux code: 33 71 96 100 100
Fitting: 1 x LED (Correction Factor 1.000).





Operator
Telephone
Fax
e-Mail

Street 1 / Valuation Field Sidewalk 1 / Results overview

Light loss factor: 0.67

Scale 1:208

Grid: 10 x 3 Points

Accompanying Street Elements: Sidewalk 1.

Selected Lighting Class: S3

(All lighting performance requirements are met.)

Calculated values:

Required values according to class:

Fulfilled/Not fulfilled:

 E_{av} [lx]

9.98

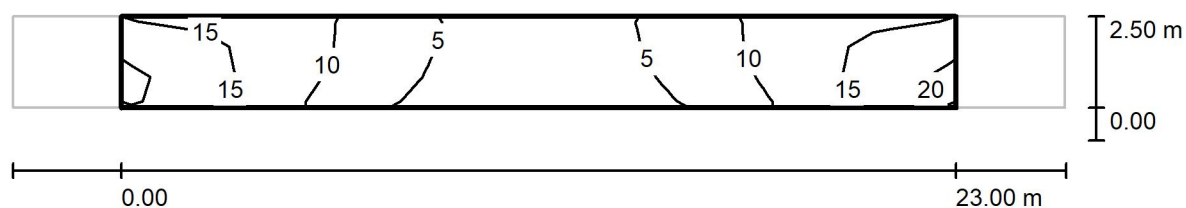
 ≥ 7.50  E_{min} [lx]

2.37

 ≥ 1.50 



Operator
Telephone
Fax
e-Mail

Street 1 / Valuation Field Sidewalk 1 / Isolines (E)

Values in Lux, Scale 1 : 208

Grid: 10 x 3 Points

 E_{av} [lx]
9.98 E_{min} [lx]
2.37 E_{max} [lx]
20 u_0
0.237 E_{min} / E_{max}
0.121