

 STERIS

# Gmax



**Gmax™ Surgical Tables**  
*Transfer system*

# Gmax

## Complete, open-ended system

**Technology is a good thing...**  
**useful** innovation is even better.

After the success of the TRANSFERIS table, with 4500 units sold worldwide, STERIS is offering a new perspective on transfer system tables.

Our engineers have built upon your needs to develop a table based 100% on useful technology.

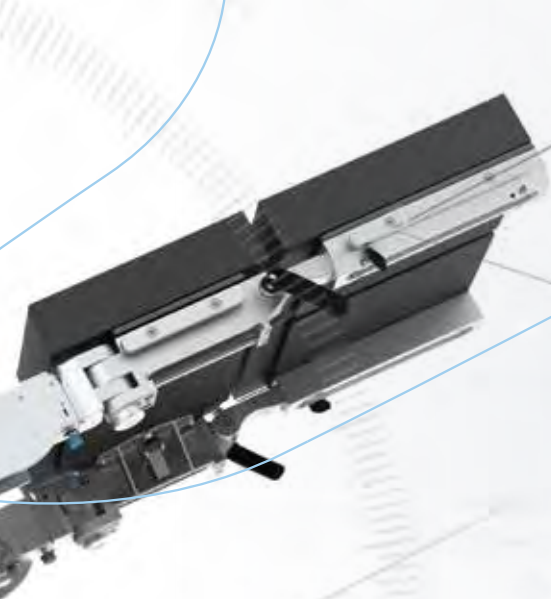
Do you need a multitude of table tops...  
or rather a multitude of configurations? With Gmax™,  
the versatility is in the very design of the product.  
**Do MORE with LESS!**

*Optimise  
your operating suite!*



*"Design is not just what it looks like and feels like. Design is how it works."*

**Steve JOBS**



## 100% useful technology



### Gmax™ facilitates day-to-day running of an operating suite

Every detail of the Gmax™ table, developed with surgical teams, is designed to facilitate the day-to-day running of an operating suite. It satisfies a threefold purpose: to cover the greatest possible number of applications, to guarantee patient safety, and to save time for the operating room staff. Behind its exceptional user-friendliness lies a concentrated bundle of technology.

*Each hospital has its own  
patient transfer system.  
**STERIS gives you the choice!***

#### **A conventional trolley-based transfer system.**

The dedicated trolley for the Gmax™ operating table is specifically designed to save time, whilst guaranteeing patient safety. It is extremely ergonomic and easy to handle, even in very tight spaces.



## STERIS, the inventor of powered transfer

#### **Cmax™ T and Cmax™ Xray, powered transfer systems**

Patients are placed on the operating table top on arrival in the operating suite, until they are transferred to the recovery room. This fully powered all-in-one system reduces the physical strain on the clinical team.





## Optimise your space



Basin, legs, pedal...  
**An unobtrusive  
mobile base.**

100° insertion angle



**Quick and easy transfer,  
even in a congested  
environment.**

Regardless of the patient's height, **the table top can be adapted without further configuration**, while maintaining patient comfort.

Guaranteed access for surgical and anaesthetic teams.







**Angle and move the base in a single action -** the space is always adapted to surgical needs.



**G-LOCK**  
**Simple and secure locking...**  
The configuration of your table top is recognised and displayed automatically.

**Optimise**  
your time



One-touch patient positioning.  
**Simply press...**

**Less table tops for more specialties**



**Slide according to your needs.**



## Optimise your operating suite

Designed based on observation of the day-to-day practices of operating suite teams, Gmax™ offers advanced but intuitive functionality. Technology does not rule out easy operation... when users' needs are clearly understood.

## Optimise your budget

### Aluminium and carbon

Aluminium and carbon are used in the Gmax™ table and its radiolucent extensions. They provide an unrivalled compromise between **strength** and low **weight**, whilst remaining perfectly **resistant** to oxidation in the long term.



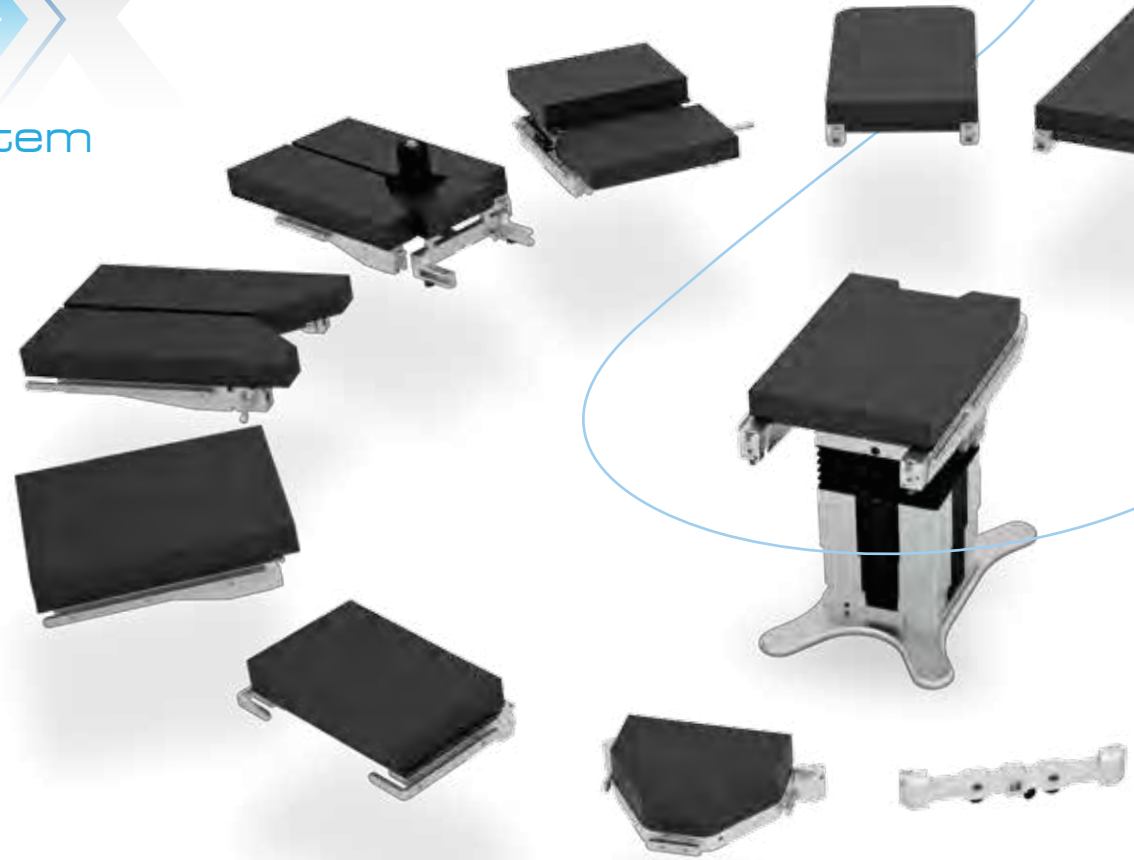
# Gmax

## **Complete**, open-ended system **Maximum** modularity

### **An almost infinite variety of configurations** *For all surgeons and all specialties.*

With a powered triple-jointed table top and appropriately designed extensions, the Gmax™ operating table provides exceptional flexibility.

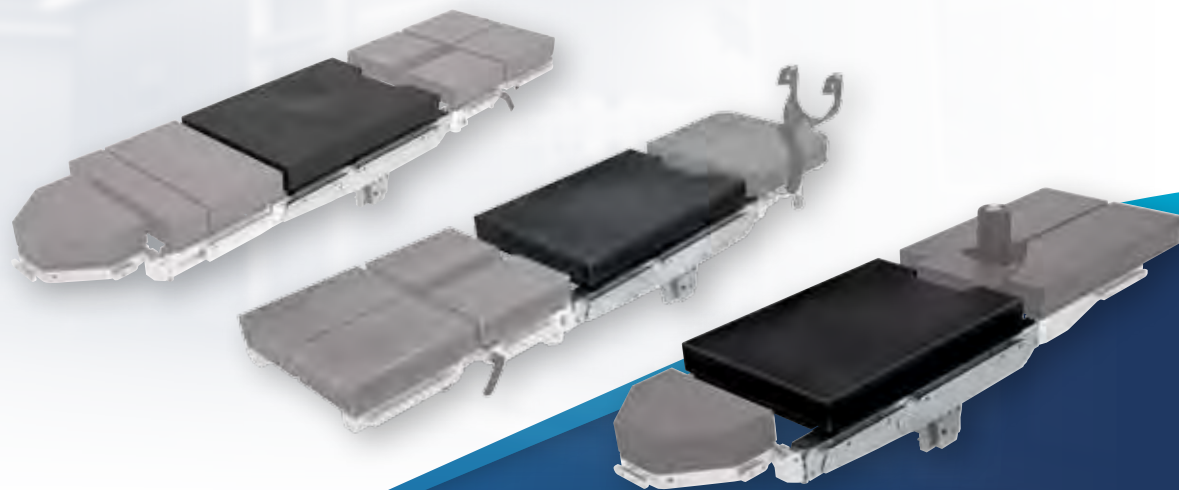
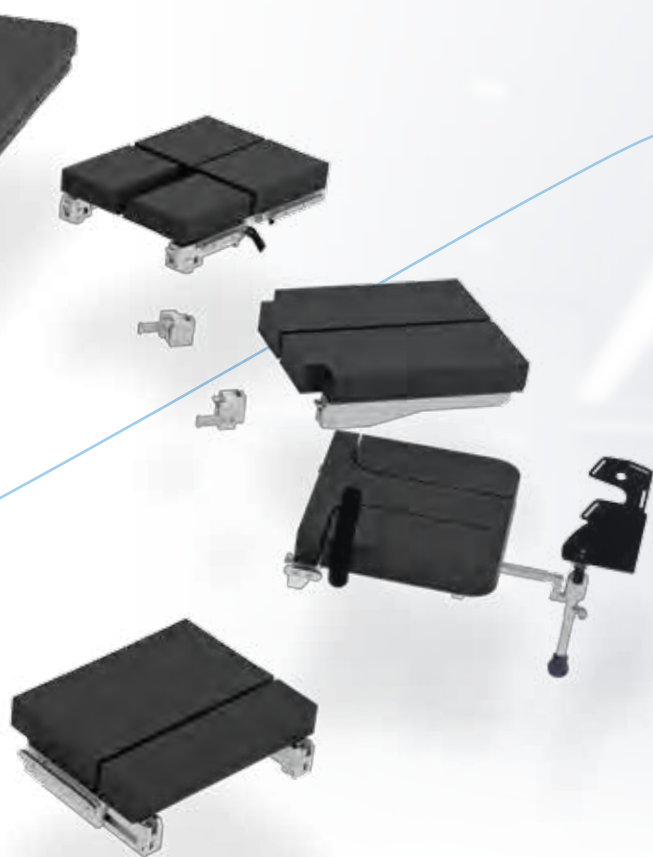
From general surgery to highly advanced specialties, including minimally invasive surgery, the Gmax™ table offers a very extensive choice of patient positions.



**The radiolucent table top slides along 374 mm**  
to provide optimum access for the C-arm. The slide function  
is easy to operate using the hand control.



**Smart system**  
**Automatic**  
recognition of the extensions



#### **Examples of configurations**

Multi-jointed table tops, incorporating powered translation, for all types of surgery.



**Guide** your way...



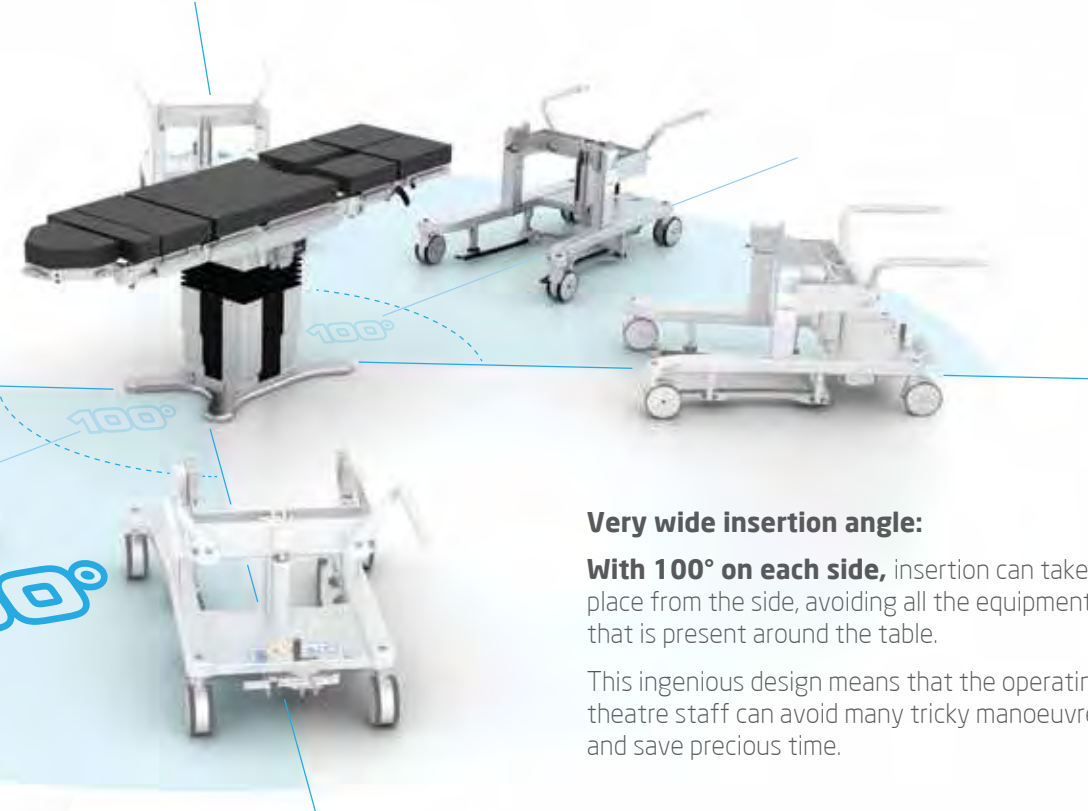
**A range of very ergonomic trolleys**



**Extremely easy to handle**

- Very compact
- The widest insertion angle (100°)
- Large swivel wheels





### Very wide insertion angle:

**With 100° on each side,** insertion can take place from the side, avoiding all the equipment that is present around the table.

This ingenious design means that the operating theatre staff can avoid many tricky manoeuvres and save precious time.



### Very versatile

- Height and trend / reverse trend adjustments\*
- Movement of the table top and / or column
- Compatible even with table tops that are equipped with accessories

### Easy to use

- Adjustable ergonomic handles\*
- Automatic control of table top position

\* Depending on model



### UNIQUE, SIMPLE, AND EFFICIENT: the patented STERIS repositioning trolley

In the operating theatre, the repositioning trolley patented by STERIS allows the column to be moved in just a few seconds to the exact location required for the next operation or for cleaning and disinfection procedures.





## View what you are doing!

**The hand control for the Gmax™ operating table is highly intuitive, and lets you reach the desired position in just a few seconds.**

- All powered movements are accessible:
  - Height, lateral tilt, trend / reverse trend, slide, split leg / back sections
  - Pre-programmed positions can be accessed using a one-touch process (GO)
  - Up to 10 complex settings can be programmed for immediate access
- Real-time display of table and patient positions for quick and intuitive adjustment via a simplified menu illustrated with pictograms
- The Auto Limit Sensor™ built-in safety system uses an audible alarm to alert the user whenever incompatible movements are requested
- One-touch transfer
- The hand control can be used in wireless (Bluetooth™) mode or via the spiral cable



**The backlit screen and keypad**

are especially useful for endoscopic procedures.

**2 safety back-up levels.**



## Ergonomic column

**The column of the Gmax™ operating table has a robust yet compact design to facilitate the daily running of an operating theatre.**

It has a compact footprint, and the X-shaped pedestal leaves enough space for the surgical team to stand unimpeded and close to the patient.

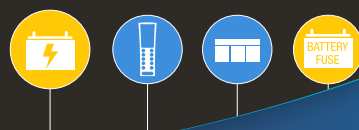
Cleaning and disinfection are made easier by a design that is both attractive and practical: the polished stainless steel base, profiles without rough areas, fully accessible bellows, and back-up keypad and cable connections that are fully integrated into the column.

**Two column versions are available:**

- 1 **Mobile column**
- 2 **Fixed column**



**The main movements are available as part of an independent back-up.**



**The connections (hand control, pedal, and charger) are grouped in the same area.**

### The X-shaped base

allows the medical team to be as close as necessary to the patient.





# TYPES OF SURGERY

General / Gynaecology / Urology / Ophthalmology

**Gmax™ includes a full range of extensions and accessories for any type of surgery.**

Visit our website  
[www.steris-accessories.com](http://www.steris-accessories.com)

**Optimising your**

**Versatility creates flexibility:**

less configurations and less table tops to be handled.



**Gynaecology**

Powered pelvic joint



**Ophthalmology**



Built-in extension  
for tall patients



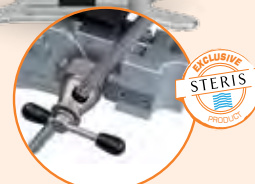
Ergonomic double-  
jointed hydraulic head  
section



**Nephrectomy**



**Urology**



Use of powered and  
independent Goepel  
supports





operating schedule



Colectomy



Lateral tilt  
up to 30°

Neurosurgery



## Neurosurgery

Neurosurgery



Specialist head sections available  
(also available in carbon fibre)



## Bariatrics

Bariatrics



45° reverse  
trend

Max  
capacity  
**360<sup>KG</sup>**

Bariatrics



450 mm minimum height

A single configuration (head section / back section / leg sections) is suitable for  
**the large majority of procedures in your operating suite.**

# EVOLUTI

## SURGERIES

### Orthopaedics

Knee arthroscopy



Femoral traction



Hand surgery



Shoulder surgery



Hip surgery



1108 mm maximum height

Direct anterior approach hip replacement surgery

Back surgery - spine surgery  
in the knee-chest position



## Vascular surgery



Ref: GTOVPS

The floating table top of the Gmax™ table is totally radiolucent and is compatible with most non-invasive surgical procedures. With its long slide, it is 360° radiolucent up to 1352 mm.

The longitudinal, lateral and transverse movements naturally follow the surgeon's movements via the joystick. This system provides precise and incredibly intuitive control.



### Carbon fibre table tops and extensions



Ref: VSC09G



Ref: VSC12G



Ref: HEAD08A

## Technical Specifications

GENERAL INFORMATION	Table top width ( <i>on external rails</i> )	536 mm / 576 mm
	Total table top length ( <i>along extensions</i> )	730 - 2310 mm
	All-position loading capacity	250 kg (360 kg without limitations)
POWERED MOVEMENTS	Height / Stroke height	637 - 1108 mm / 471 mm
	Trend / Rev Trend	+45° / -45°
	L/R tilt	+28° / -28°
	Upper back section	+35° / -65°
	Lower back section	+80° / -30°
	Leg plate	+90° / -90°
	Right / left leg sections ( <i>independent</i> )	+90° / -90°
MANUAL MOVEMENTS	Slide	374 mm
	Length-adjustable back section BAK02G	0 / 120 mm
	Leg section abduction LEG30G / LEG10G	0° / +90°
	Tibial plate tilt LEG30G	+90° / -110°
	Trolley trend/rev trend GCARHT	+15° / -15°
	Adjustable trolley height GCARHT	713 - 896 mm

The Gmax™ table is a Class I CE Marked medical device. To use this equipment safely, carefully read the instructions in the user manual and on the labelling. Movement tolerance 10% up.



The new  
**STERIS**  
global solution

ORigami 



**With ORigami,  
the operating theatre is considered in its entirety.**

Based on surgical practices and a given set of constraints (facilities, teams, etc.), the **STERIS** design teams are able to offer a fully integrated, high-level solution. Operating tables, lighting, partitions, doors, sinks, electricity and gas supplies, laminar flow, computer integration... everything is thought out, coordinated, and optimised to provide exceptional quality of service day in, day out.



#### **STERIS OFFICES WORLDWIDE**

Belgium + 32 3 304 95 44  
Canada + 905 677 0863  
China + 86 10 5900 3786  
France + 33 5 56 93 94 94  
Germany + 49 221 4661 20 30  
Italy + 39 02 213 034 1  
Korea + 82 2 527 1517  
Latin America + 1 305 442 9822  
Malaysia + 60 3 7954 9822  
Russia + 7 499 737 7733  
Singapore + 65 68 41 7677  
Spain + 34 91 658 5920

#### **STERIS SAS**

116 avenue de Magudas  
33185 Le Haillan - France  
**Tel: + 33 5 56 93 94 94**  
Fax: + 33 5 56 93 94 95  
E-mail: [contact\\_sst@steris.com](mailto:contact_sst@steris.com)  
[www.steris-healthcare.com](http://www.steris-healthcare.com)  
[www.steris-accessories.com](http://www.steris-accessories.com)

#### **STERIS Corporation**

5960 Heisley Road - Mentor,  
OH 44060-1834 - USA  
Tel: + 1 440-354-2600  
Fax: + 1 440-639-4457  
[www.steris.com](http://www.steris.com)

#### **ESCHMANN Equipment**

A Subsidiary of STERIS Corporation  
Eschmann House  
15 Peter Road  
Lancing Business Park  
Lancing, West Sussex BN15 8TJ  
Tel: + 44 1903 753322  
Fax: + 44 1903 875789  
Email: [info@eschmann.co.uk](mailto:info@eschmann.co.uk)  
[www.eschmann.co.uk](http://www.eschmann.co.uk)



With 8000 employees worldwide, **STERIS** is a major player in the healthcare sector. Working with more than 25,000 customers in over 80 countries, **STERIS** has a global product offer serving the whole operating theatre: operating tables, surgical lighting, distribution arms, and integration systems. **STERIS IPT** (Infection Prevention Technology) also supplies technologies that contribute to preventing infections: washers, disinfection units, sterilisers, and consumables.