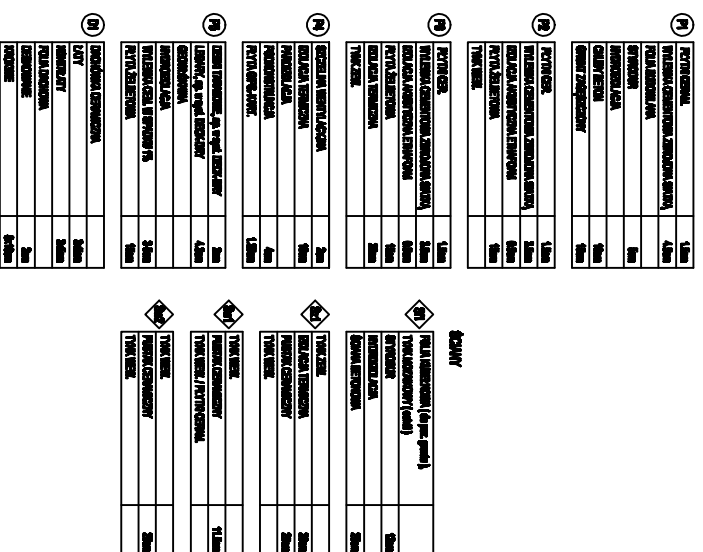


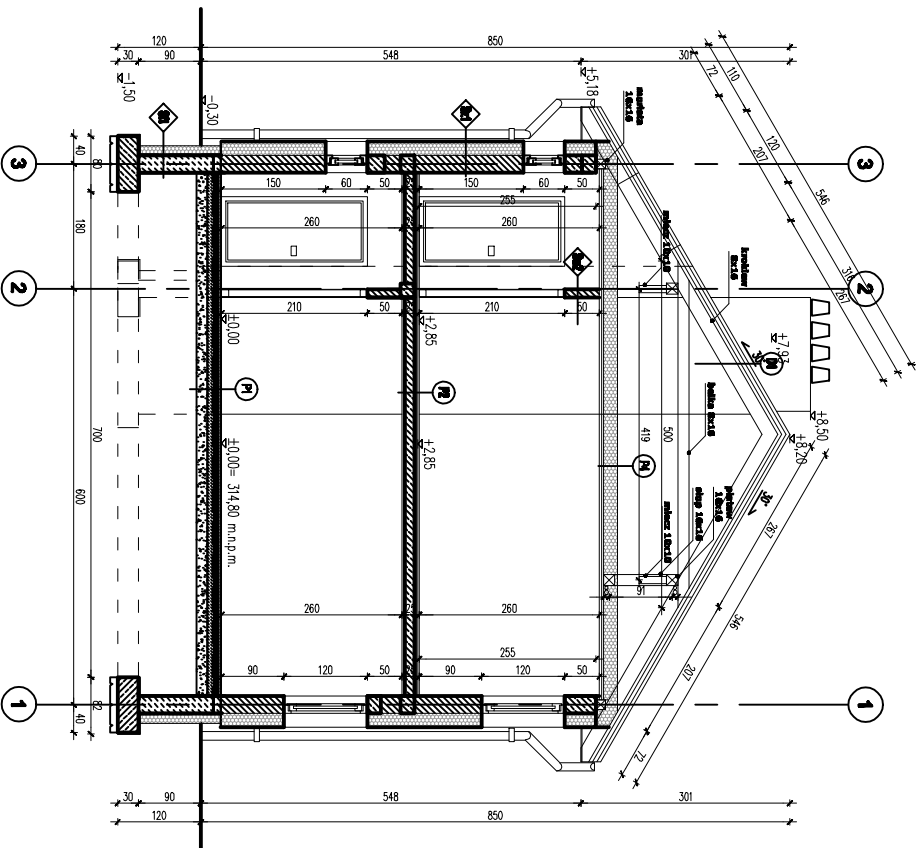
**ISTNIEJĄCY TEREN -TEREN  
PROJEKTOWANY**

<b>BLOK NR 1</b>	$\pm 0,00 = 314,80 \text{ m.r.p.m.}$
<b>BLOK NR 2</b>	$\pm 0,00 = 314,80 \text{ m.r.p.m.}$
<b>BLOK NR 3</b>	$\pm 0,00 = 314,80 \text{ m.r.p.m.}$
<b>BLOK NR 4</b>	$\pm 0,00 = 314,80 \text{ m.r.p.m.}$



## Summary

# PRZEKRÓJ B-B 1:100



**ISTNIEJĄCY TEREN -TEREN  
PROJEKTOWANY**

**PRZEKRÓJ A-A 1:100**

Formularz nr 1000001	Imię i nazwisko	Data	Nr uprawnień	Podpis
<b>A 3</b>	<b>Protokant:</b>	mgr inż. arch. Agnieszka LEWANDOWSKA	02.2017	MP04/024/2007
<b>Sprawozdający:</b>	mgr inż. arch. Krzysztof RADKIE	02.2017	04/4-05/07	

klasa reprezentuje Tomasz Zak-Burniatka Andrychowa przy Kontasiegnacie Szafranika Gentry-Doroty Żywił Głinnik Alinajcinow, ul. Rybiek 15, 34-120 Alinajcinow,

Przebiegiem choroby/chorób:  
Pozostała budowlą wraz z instalacjami, oraz przykryciem energoizacyjnym posesadowanych na dz. nr 306/4-15 w Andrychowie (budulek nr 46 przy ul. Białego w Andrychowie oraz przykrycia na dz. nr 306/4-15 w Andrychowie) z tego stodoły, oraz budowa części budowlam sąsiadujących zlokalizowanych wraz z instalacjami, urządzeń termal. Andrychów nr dz. ewid.: 306/9-3, 306/9-4, 306/14-9, 306/14-12, 306/14-13, 306/14-14, 306/14-15, 306/14-16, 306/14-17, 306/14-18, 306/14-19, 306/14-20, 306/14-21, 306/14-22, 306/14-23, 306/14-24, 306/14-25, 306/14-26, 306/14-27, 306/14-28, 306/14-29, 306/14-30, 306/14-31, 306/14-32, 306/14-33, 306/14-34, 306/14-35, 306/14-36, 306/14-37, 306/14-38, 306/14-39, 306/14-40, 306/14-41, 306/14-42, 306/14-43, 306/14-44, 306/14-45, 306/14-46, 306/14-47, 306/14-48, 306/14-49, 306/14-50, 306/14-51, 306/14-52, 306/14-53, 306/14-54, 306/14-55, 306/14-56, 306/14-57, 306/14-58, 306/14-59, 306/14-60, 306/14-61, 306/14-62, 306/14-63, 306/14-64, 306/14-65, 306/14-66, 306/14-67, 306/14-68, 306/14-69, 306/14-70, 306/14-71, 306/14-72, 306/14-73, 306/14-74, 306/14-75, 306/14-76, 306/14-77, 306/14-78, 306/14-79, 306/14-80, 306/14-81, 306/14-82, 306/14-83, 306/14-84, 306/14-85, 306/14-86, 306/14-87, 306/14-88, 306/14-89, 306/14-90, 306/14-91, 306/14-92, 306/14-93, 306/14-94, 306/14-95, 306/14-96, 306/14-97, 306/14-98, 306/14-99, 306/14-100, 306/14-101, 306/14-102, 306/14-103, 306/14-104, 306/14-105, 306/14-106, 306/14-107, 306/14-108, 306/14-109, 306/14-110, 306/14-111, 306/14-112, 306/14-113, 306/14-114, 306/14-115, 306/14-116, 306/14-117, 306/14-118, 306/14-119, 306/14-120, 306/14-121, 306/14-122, 306/14-123, 306/14-124, 306/14-125, 306/14-126, 306/14-127, 306/14-128, 306/14-129, 306/14-130, 306/14-131, 306/14-132, 306/14-133, 306/14-134, 306/14-135, 306/14-136, 306/14-137, 306/14-138, 306/14-139, 306/14-140, 306/14-141, 306/14-142, 306/14-143, 306/14-144, 306/14-145, 306/14-146, 306/14-147, 306/14-148, 306/14-149, 306/14-150, 306/14-151, 306/14-152, 306/14-153, 306/14-154, 306/14-155, 306/14-156, 306/14-157, 306/14-158, 306/14-159, 306/14-160, 306/14-161, 306/14-162, 306/14-163, 306/14-164, 306/14-165, 306/14-166, 306/14-167, 306/14-168, 306/14-169, 306/14-170, 306/14-171, 306/14-172, 306/14-173, 306/14-174, 306/14-175, 306/14-176, 306/14-177, 306/14-178, 306/14-179, 306/14-180, 306/14-181, 306/14-182, 306/14-183, 306/14-184, 306/14-185, 306/14-186, 306/14-187, 306/14-188, 306/14-189, 306/14-190, 306/14-191, 306/14-192, 306/14-193, 306/14-194, 306/14-195, 306/14-196, 306/14-197, 306/14-198, 306/14-199, 306/14-200, 306/14-201, 306/14-202, 306/14-203, 306/14-204, 306/14-205, 306/14-206, 306/14-207, 306/14-208, 306/14-209, 306/14-210, 306/14-211, 306/14-212, 306/14-213, 306/14-214, 306/14-215, 306/14-216, 306/14-217, 306/14-218, 306/14-219, 306/14-220, 306/14-221, 306/14-222, 306/14-223, 306/14-224, 306/14-225, 306/14-226, 306/14-227, 306/14-228, 306/14-229, 306/14-230, 306/14-231, 306/14-232, 306/14-233, 306/14-234, 306/14-235, 306/14-236, 306/14-237, 306/14-238, 306/14-239, 306/14-240, 306/14-241, 306/14-242, 306/14-243, 306/14-244, 306/14-245, 306/14-246, 306/14-247, 306/14-248, 306/14-249, 306/14-250, 306/14-251, 306/14-252, 306/14-253, 306/14-254, 306/14-255, 306/14-256, 306/14-257, 306/14-258, 306/14-259, 306/14-260, 306/14-261, 306/14-262, 306/14-263, 306/14-264, 306/14-265, 306/14-266, 306/14-267, 306/14-268, 306/14-269, 306/14-270, 306/14-271, 306/14-272, 306/14-273, 306/14-274, 306/14-275, 306/14-276, 306/14-277, 306/14-278, 306/14-279, 306/14-280, 306/14-281, 306/14-282, 306/14-283, 306/14-284, 306/14-285, 306/14-286, 306/14-287, 306/14-288, 306/14-289, 306/14-290, 306/14-291, 306/14-292, 306/14-293, 306/14-294, 306/14-295, 306/14-296, 306/14-297, 306/14-298, 306/14-299, 306/14-300, 306/14-301, 306/14-302, 306/14-303, 306/14-304, 306/14-305, 306/14-306, 306/14-307, 306/14-308, 306/14-309, 306/14-310, 306/14-311, 306/14-312, 306/14-313, 306/14-314, 306/14-315, 306/14-316, 306/14-317, 306/14-318, 306/14-319, 306/14-320, 306/14-321, 306/14-322, 306/14-323, 306/14-324, 306/14-325, 306/14-326, 306/14-327, 306/14-328, 306/14-329, 306/14-330, 306/14-331, 306/14-332, 306/14-333, 306/14-334, 306/14-335, 306/14-336, 306/14-337, 306/14-338, 306/14-339, 306/14-340, 306/14-341, 306/14-342, 306/14-343, 306/14-344, 306/14-345, 306/

**BUDYNEK 4**

**Nazwa rysunku:**

**PRZEKROJE**

**Brand:**  
ARCHITEKTURA  
KONSTRUKCJA

**Brand:**  
ARCHITEKTURA  
KONSTRUKCJA

**Brand:**  
ARCHITEKTURA  
KONSTRUKCJA