

Svetelná štúdia

Elektroinštalácia

Časť: Silnoprúdové a svetelné rozvody,
Uzemňovacia sústava



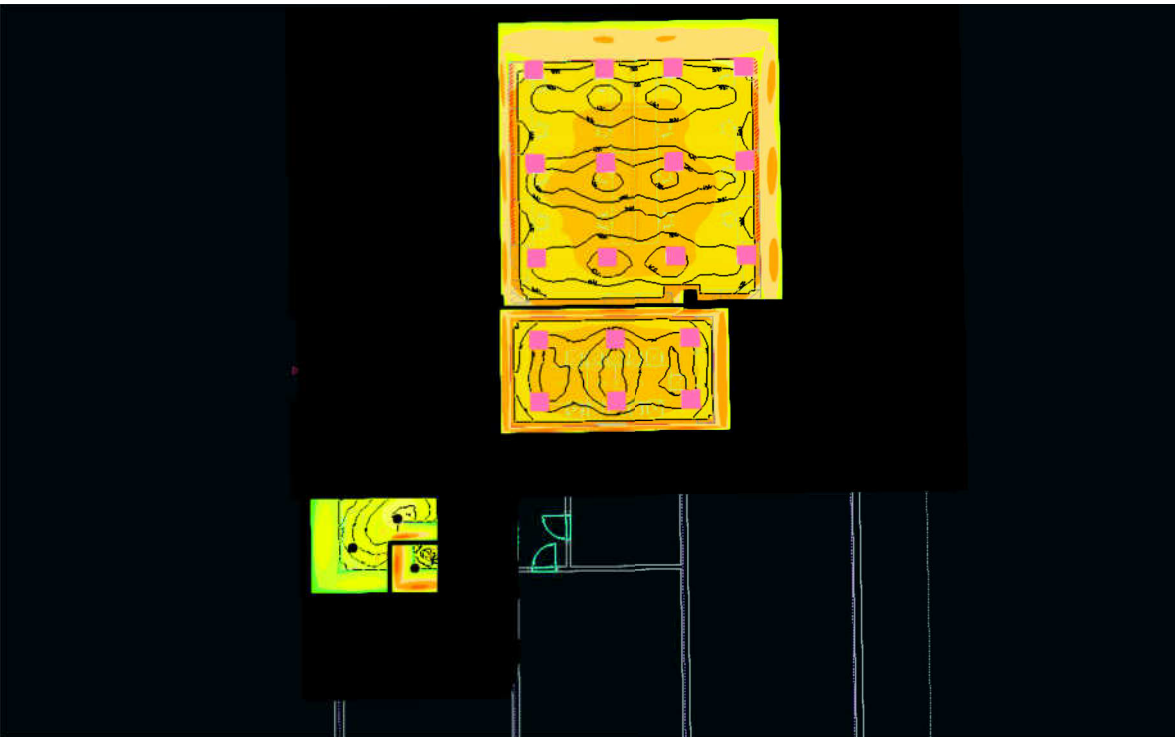
FBB-ELECTRIC s.r.o.

Prevádzka: Šafárikova 443/16,
Galanta 924 01, [SLOVAKIA]

web: www.fbb.sk
e-mail: info@fbb.sk

E4.3.

Názov stavby:	REKONŠTRUKCIA A PRESTAVBA SKLADOVÝCH PRIESTOROV NA KANCELÁRSKE PRIESTORY		
Stavebný objekt:	-		
HIP:	Ing. Roman Hanák	Razítko:	Výtlačok č.
Zodpovedný p.:	Ing. Bálint Forró		
Vypracoval:	Tamás Szomolay		
Miesto:	Ružinov		
Stupeň:	DOS		
Dátum:	05/2024		
Č.projektu:	P240506_V10		
Lokalita:	k.ú. Ružinov, č.p.: 3979/43		
Investor:	ODVOZ A LIKVIDÁCIA ODPADU a.s., IVÁNSKA CESTA 22, PSČ.: 821 04 BRATISLAVA		



P240506

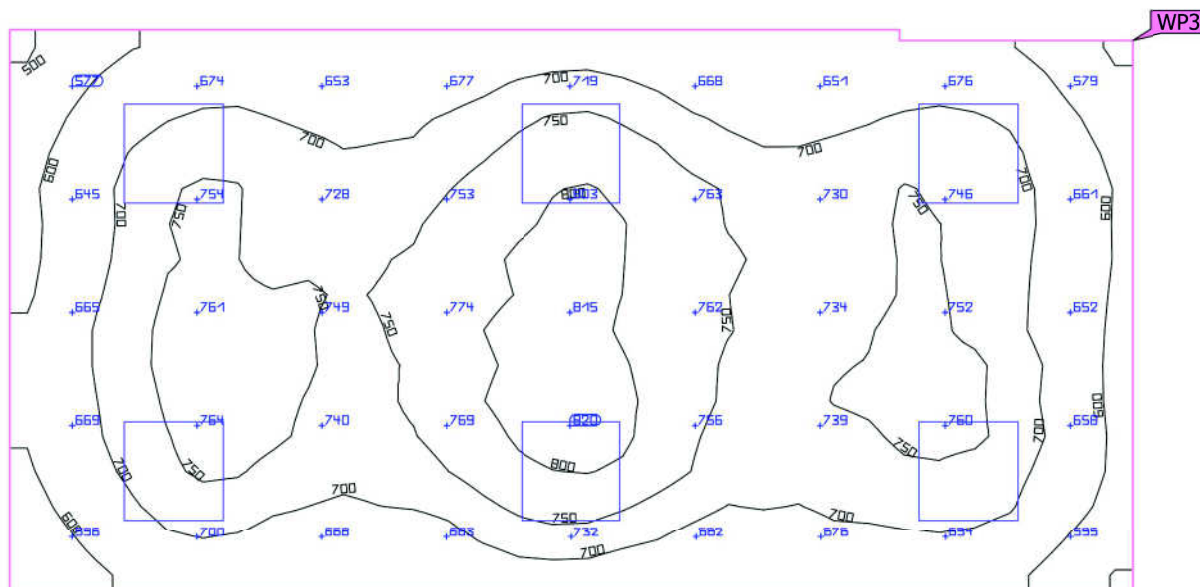
Rekonštrukcia a prestavba skladových priestorov na kancelárske priestory

Object

Lokalita: k.ú. Ružinov, č.p.:
3979/43

Building 5 · Storey 1 · 101 Zasadacia miestnosc' (Light scene 1)

Working plane (101 Zasadacia miestnost)

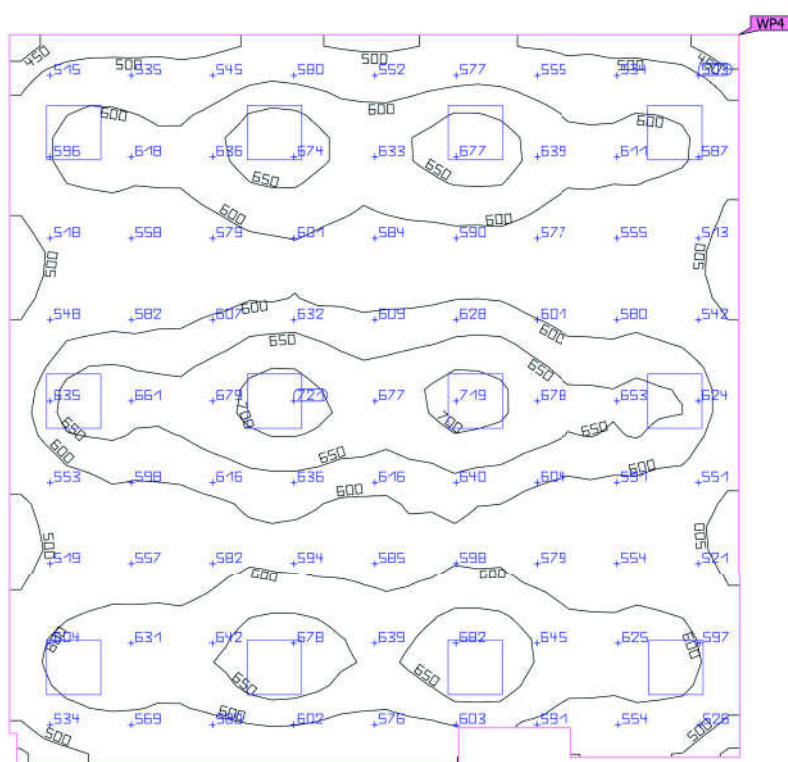
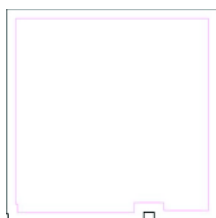


Properties	\bar{E} (Target)	E_{min}	E_{max}	$U_o (g_1)$ (Target)	g_2	Index
Working plane (101 Zasadacia miestnost) Perpendicular illuminance (adaptive) Height: 0.800 m, Wall zone: 0.210 m	705 lx (≥ 500 lx) ✓	490 lx	823 lx	0.70 (≥ 0.60) ✓	0.60	WP3

Utilisation profile: Offices (34.2 Writing, typewriting, reading, data processing)

Building 5 · Storey 1 · 102 Kancelária (Light scene 1)

Working plane (102 Kancelária)

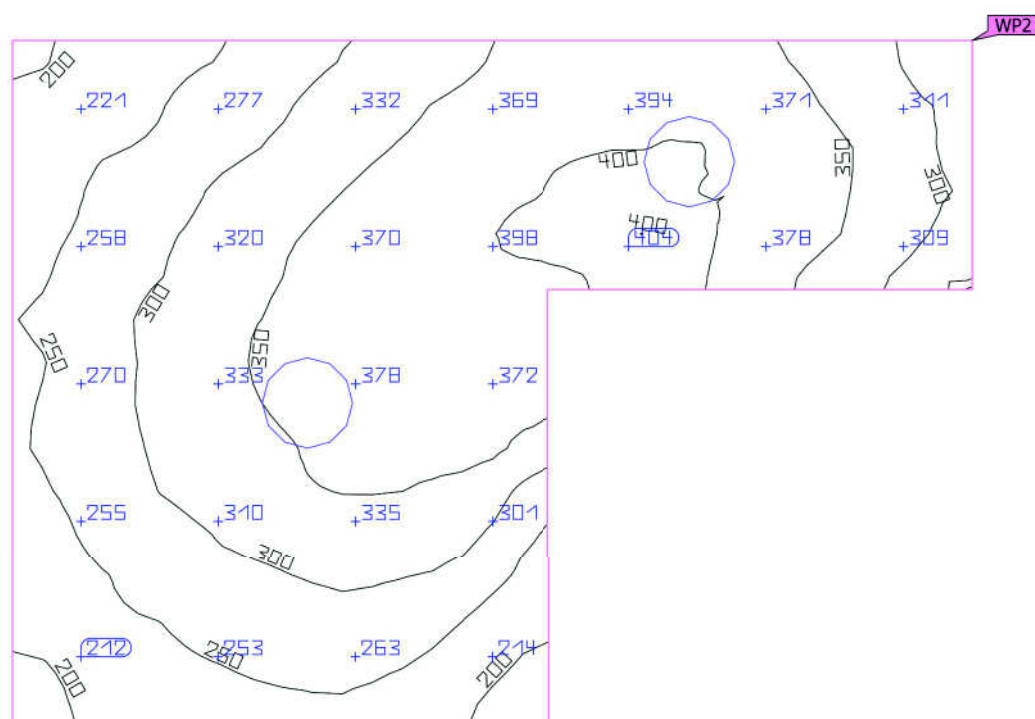


Properties	\bar{E} (Target)	E_{min}	E_{max}	$U_o (g_1)$ (Target)	g_2	Index
Working plane (102 Kancelária) Perpendicular illuminance (adaptive) Height: 0.800 m, Wall zone: 0.398 m	596 lx (≥ 500 lx) ✓	408 lx	720 lx	0.68 (≥ 0.60) ✓	0.57	WP4

Utilisation profile: Offices (34.2 Writing, typewriting, reading, data processing)

Building 5 · Storey 1 · 103 čajová kuchynka (Light scene 1)

Working plane (103 čajová kuchynka)

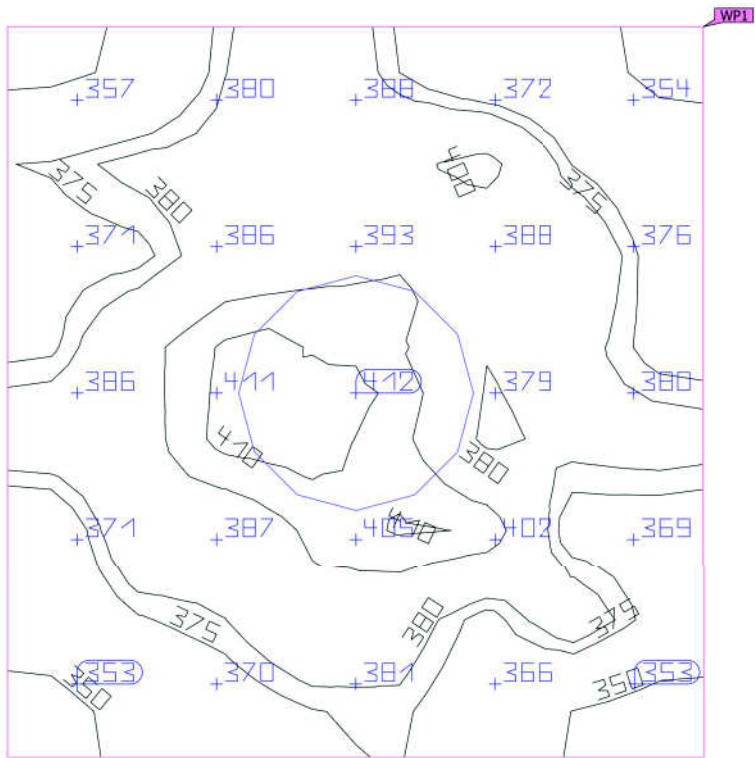
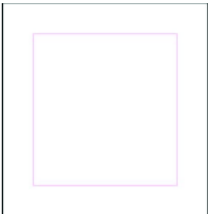


Properties	\bar{E} (Target)	E_{min}	E_{max}	U_o (g_1) (Target)	g_2	Index
Working plane (103 čajová kuchynka) Perpendicular illuminance (adaptive) Height: 0.800 m, Wall zone: 0.195 m	314 lx (≥ 200 lx) ✓	176 lx	407 lx	0.56 (≥ 0.40) ✓	0.43	WP2

Utilisation profile: General areas inside buildings - Rest, sanitation and first aid rooms (10.1 Canteens, pantries)

Building 5 · Storey 1 · 104 WC (Light scene 1)

Working plane (104 WC)



Properties	\bar{E} (Target)	E_{min}	E_{max}	$U_o (g_1)$ (Target)	g_2	Index
Working plane (104 WC) Perpendicular illuminance (adaptive) Height: 0.800 m, Wall zone: 0.210 m	381 lx (≥ 200 lx) ✓	341 lx	413 lx	0.90 (≥ 0.40) ✓	0.83	WP1

Utilisation profile: General areas inside buildings - Rest, sanitation and first aid rooms (10.4 Cloakrooms, washrooms, bathrooms, toilets)