



The diagram illustrates different types of cadastral boundaries and their durations:

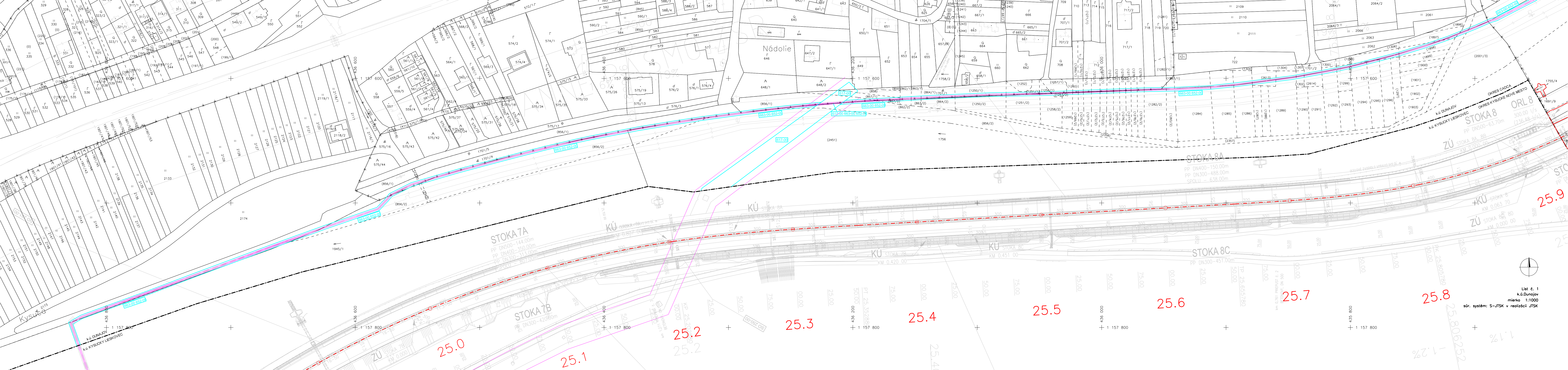
- trvalý záber** (permanent acquisition): Represented by a solid red line.
- dočasný záber do jedného roka** (temporary acquisition for one year): Represented by a solid cyan line.
- dočasný záber (nad jeden rok)** (temporary acquisition (more than one year)): Represented by a solid blue line.
- kataster CKN** (Cadastral Land Register): Represented by a solid black line with the number 11764 above it.
- kataster EKN** (Cadastral EKN): Represented by a dashed black line with the year (2017) above it.
- os stavby** (building line): Represented by a dashed red line with dots.
- stavebný objekt** (building object): Represented by a cyan box containing the number 577-00.
- katastrálna hranica** (cadastral boundary): Represented by a solid black line with dots, and a blue box containing the number 209-00.

Diagram illustrating the arrangement of two sheets of paper (List č. 1 and List č. 2) for scanning. Sheet 1 is a standard A4 size (1260x297 mm) and Sheet 2 is a larger format (1050x420 mm). Sheet 2 is placed on top of Sheet 1, offset to the right and slightly rotated, demonstrating how the larger sheet can be scanned in a single pass while the smaller sheet is positioned below it.

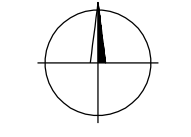
# G05

<b>VYPRACOVAL:</b> Ing. LUCIA HLAVATÁ		<b>HL. INŽ. PROJEKTU:</b> Ing. LUBOSLAV NAGY		<b>ZHOTOVITEL:</b>  <b>INŽINIERSKÁ A GEODETICKÁ ČINNOSŤ</b> PETELENKOVA 15691/7 974 01 BANSKÁ BYSTRICA mobil: 0907 566 185 e-mail: debnar@geomad.sk
<b>ZOD. PROJEKTANT:</b> Ing. JOZEF DEBNÁR		<b>TECH. KONTROLA:</b> Bc. MATÚŠ DEBNÁR		
<b>OBJEDNÁVATEL:</b> <b>NÁRODNÁ DIACNIČNÁ SPOLOČNOSŤ a.s., Dúbravská cesta 14, 841 04 Bratislava</b>				
<b>KRAJ:</b> ŽILINSKÝ KRAJ		<b>OKRES:</b> KYSUCKÉ NOVÉ MESTO, ČADCA		
<b>STAVBA:</b>  <b>DIACNIČA D3 KYSUCKÉ NOVÉ MESTO - OŠČADNICA</b>				<b>ČÍSLO ZÁKAZKY:</b> <b>608</b>
<b>PRÍLOHA:</b>  <b>SITUÁCIA DOTKNUTÝCH POZEMKOV</b>				<b>STUPEŇ:</b> <b>DSP (DRS)</b>
				<b>DÁTUM:</b> <b>10/2023</b>
				<b>FORMÁT:</b> <b>-</b>
				<b>MIERKA:</b> <b>1:1000</b>
				<b>ČÍSLO PRÍLOHY:</b> <b>5.1</b>
				<b>SÚPRAVA:</b>





List č. 1  
k.ú. Dunajov  
mírka 1:1000  
súr. systém: S-JTSK v realizácii JTSK



25.9

25.8

25.7

25.6

25.5

25.4

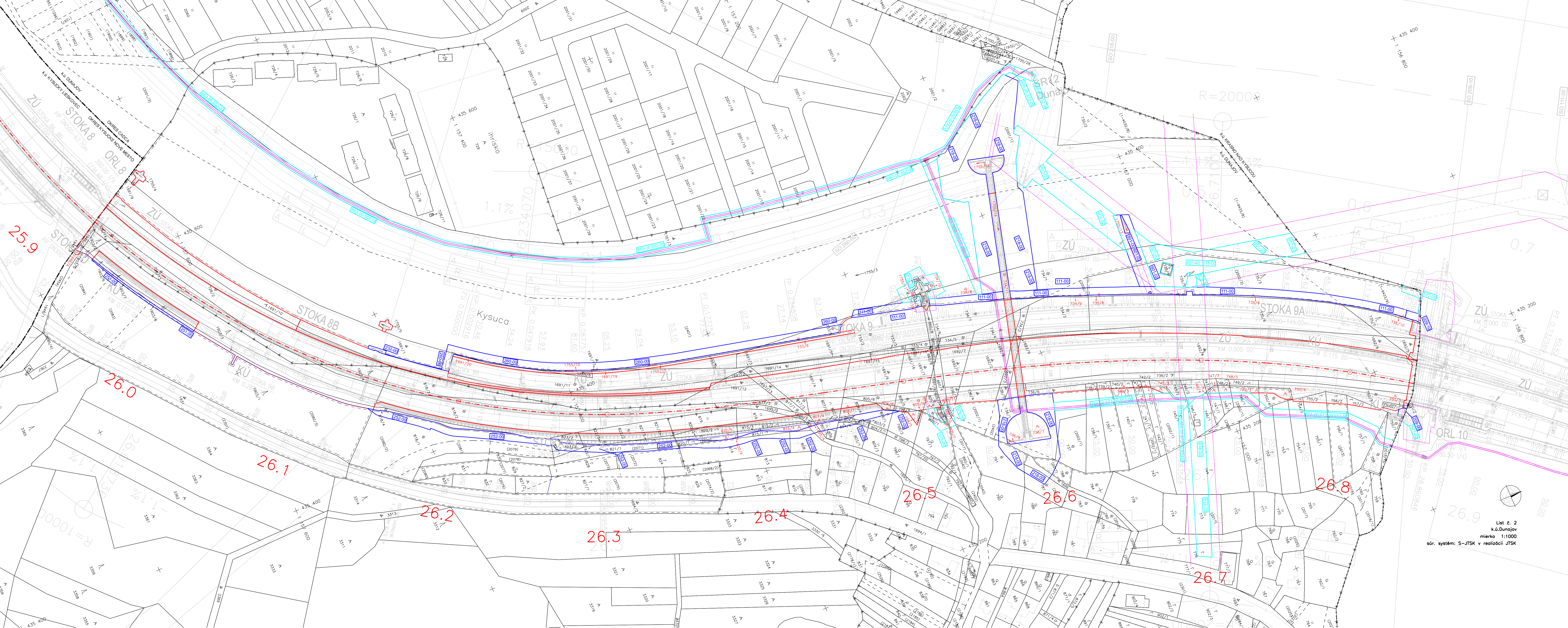
25.3

25.2

25.1

25.0





List č. 2  
k.ú. Dunačov  
mierka 1:1000  
súr. systém: S-JTSK v realizácii JTSK