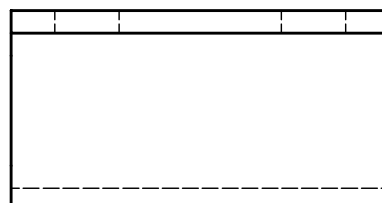
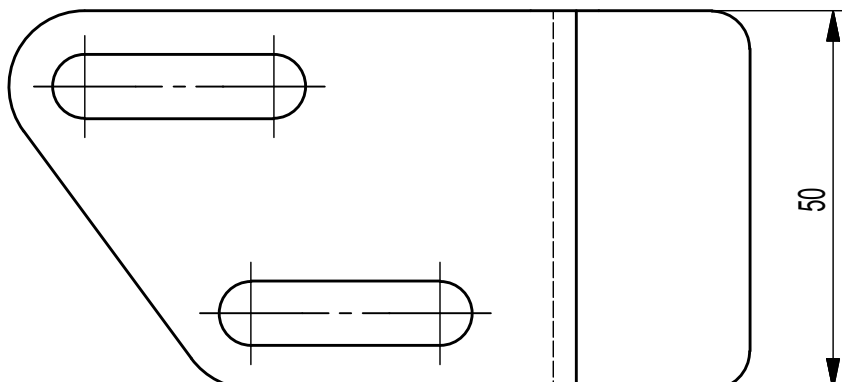


We reserve all rights in this document and in the information contained therein. Reproduction, use or disclosure to third parties without express authority is strictly forbidden. VKV Praha s.r.o. 1997.



Q 702-637-11.dxf

| | | | | | | | | | |
|-----------|--|------------|---------------|--------------------|-----------------------------|---------|--------------|---------|--|
| | | | | | | | | | |
| | | | | | | | | | |
| Ind. | Poč. | Změna | Podpis | Datum | Užito u č.v. sestavy | Pos, | Užito u typu | | |
| CAD | Netolerované rozměry: ISO 2768 mK ISO 8015 | | | WKV Praha s. r. o. | | | | | |
| Rozměr: | P3 - 50x116 | | Mat. vých. | Polotovár EN 10029 | | Tř.odp. | Hmot./ks | 0,11 kg | |
| Poznámka: | | | Mat. kon. | X5CrNi18-10 | TDP EN 10088-2 EN 10204-2.1 | | | | |
| Kreslil: | Tétek 21.11.2018 | Svař.tech. | | | | | Měřítko: | 1:2 | |
| Přezk. | Čmíral 30.11.2018 | Norm.ref | | | | | Formát: | A3 | |
| Technol. | | | Schv.dne | | | | | | |
| Název | PLECH | | | 702-637-11 Rev. - | | | | | |
| | | | | Listů: 1 List: 1 | | | | | |