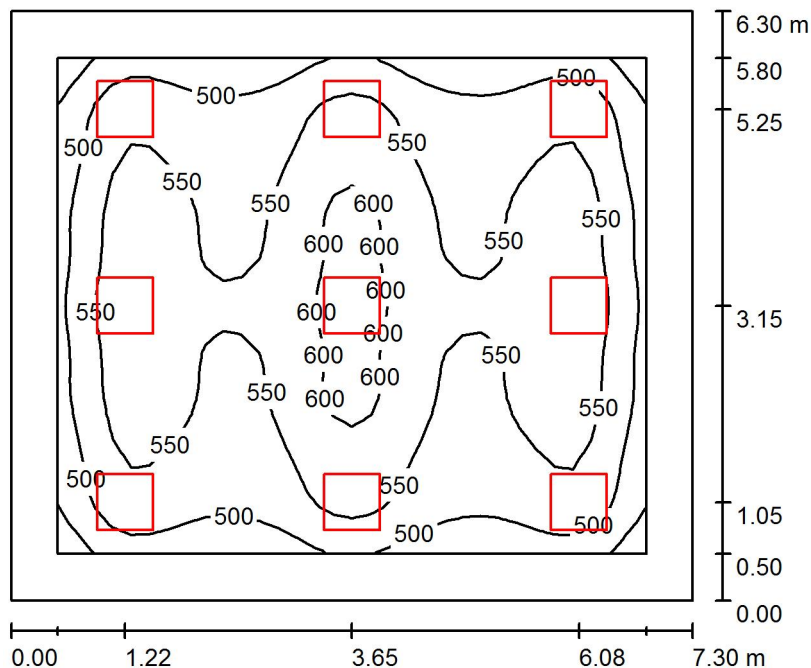


Operator
Telephone
Fax
e-Mail

Zasadacka 2,22 / Summary



Height of Room: 2.800 m, Mounting Height: 2.800 m, Maintenance factor: 0.67

Values in Lux, Scale 1:81

Surface	ρ [%]	E_{av} [lx]	E_{min} [lx]	E_{max} [lx]	u_0
Workplane	/	540	412	622	0.762
Floor	20	444	260	547	0.586
Ceiling	70	99	73	138	0.735
Walls (4)	50	217	102	330	/

Workplane:

Height: 0.750 m
 Grid: 32 x 32 Points
 Boundary Zone: 0.500 m

UGR

Left Wall 17
 Lower Wall 17
 (CIE, SHR = 1.00.)

Lengthways-

17
 17

Across

17
 17

to luminaire axis

Illuminance Quotient (according to LG7): Walls / Working Plane: 0.402, Ceiling / Working Plane: 0.184.

Proportion of points with less than 400 lx (for IEQ-7): 0.00%.

Luminaire Parts List

No.	Pieces	Designation (Correction Factor)	Φ (Luminaire) [lm]	Φ (Lamps) [lm]	P [W]
1	9	LEDVANCE GmbH 4058075440432 PL PFM 600 36W 4000K UGR19 4320LM (1.000)	4320	4320	36.0
Total:			38879	38880	324.0

Specific connected load: $7.05 \text{ W/m}^2 = 1.30 \text{ W/m}^2/100 \text{ lx}$ (Ground area: 45.99 m^2)