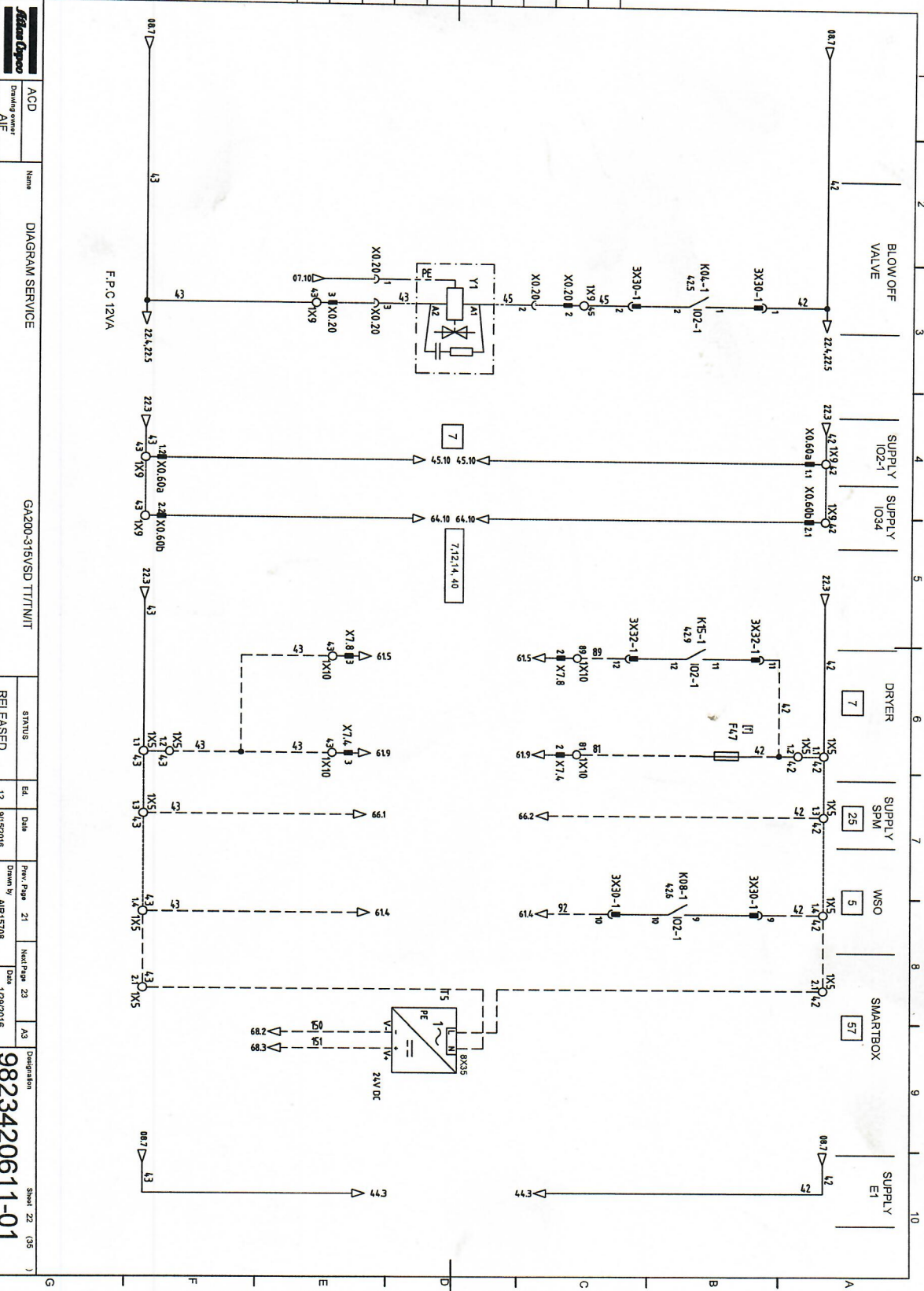


This document is our property and shall not without our permission be altered, copied, used for manufacturing or communicated to any other person or company.



Aspen Depot
 Drawing owner
 AJP

ACD
 Name
 DIAGRAM SERVICE

GA200-315VSD TTT/INT

STATUS	REL.	Date	Rev. Page	Drawn By	Date
RELEASED	12	01/02/2016	21	ANR15708	1/20/2016

Designation
9823420611-01
 Sheet 22 (35)

The document is our property and shall not without our permission be altered, copied, used for manufacturing or communicated to any other person or company.

CUSTOMER'S INSTALLATION

MAIN POWER SUPPLY [b]

VOLTAGE: **400** V
 FREQ: **50** Hz 3 PH

MAX FUSE [a]

Class gr
2x(3x 400) A

MAX FUSE [a]

Class gr
4x(3x 160) A

COMPRESSOR

M1	S.F. 1.25
---_HP	S.F. ---

[l] M16	---_KW
---_HP	---_HP

[p] M25	[p] M26
3.84 KW	3.84 KW
---_HP	---_HP

[q] M40	---_KW
---_HP	---_HP

[q] M41	[q] M42
0.59 KW	0.59 KW
---_HP	---_HP

[l] Q16	---_A
[l] F24a-c	---_A

[p] Q20	[p] Q26
3.2 A	3.2 A
[p] Q25	[p] Q26
8.24 A	8.24 A

[q] F40a-c	---_A
[q] F45	2.2 A

[q] Q41	[q] F44
3.2 A	1.1 A
[q] F43a-c	[q] F46
---_A	1.1 A
[q] F39a-c	[q] F46
---_A	1.1 A

[p] F25a-c	---_A
[p] F29a-c	---_A

OPTIONS

18899888a

<input type="checkbox"/>	<input type="checkbox"/>	<input type="checkbox"/>	<input type="checkbox"/>	<input type="checkbox"/>	<input type="checkbox"/>	<input type="checkbox"/>	<input type="checkbox"/>	<input type="checkbox"/>	<input type="checkbox"/>
BA	7	12	25	30	40	56	57		

5 WSO : Water Shut Off valve
 7 ID : Integrated dryer (Full Feature)
 12 ER : Energy Recovery
 25 SPM : Shock pulse monitoring
 30 GA air cooled version
 40 Oil Bypass Valve
 56 HSCCR
 57 Smart Box

INSTALLED

<input type="checkbox"/>	<input type="checkbox"/>	<input type="checkbox"/>	<input type="checkbox"/>	<input type="checkbox"/>	<input type="checkbox"/>	<input type="checkbox"/>	<input type="checkbox"/>	<input type="checkbox"/>	<input type="checkbox"/>
--------------------------	--------------------------	--------------------------	--------------------------	--------------------------	--------------------------	--------------------------	--------------------------	--------------------------	--------------------------

12	note [d] F16 NO-NC; F44 F46 terminal numbers	9/15/2016	Int/ Appl	Parent 3D Model	Education 3D
Power	Modified from	Date	Int/ Appl	Parent 3D Model	Education 3D

Name: DIAGRAM SERVICE		Material: GA200-315VSD TTT/UNT		Serevy Class: 1102/K	
Treatment: Not Applicable		Revision: 12.01		Drawing owner: AIF	
Released: RELEASED		Date released: 1/28/2016		Sheet 02 of 03	
Drawn by: AFR15/08		Checked by: Bank/AC		Approved: 9823420611-01	
Date checked: 12/01		Date checked: 1/28/2016		Revision: 12.01	

[Control voltage 115V 60Hz : CSA certified and UL listed industrial control panel.]
 [Applicable for all components unless a different location is specified.]

This document is our property and shall not without our permission be altered, copied, used for manufacturing or communicated to any other person or company.

Galvan Optics

ACD
Drawing owner
AIF

Name
DIAGRAM SERVICE

GA200-318VSD TT/TN/IT

STATUS
RELEASED

ED

Date

12/9/15/2016

Rev. Page

06

Drawn by

ARI/15708

Date

1/29/2016

Next Page

08

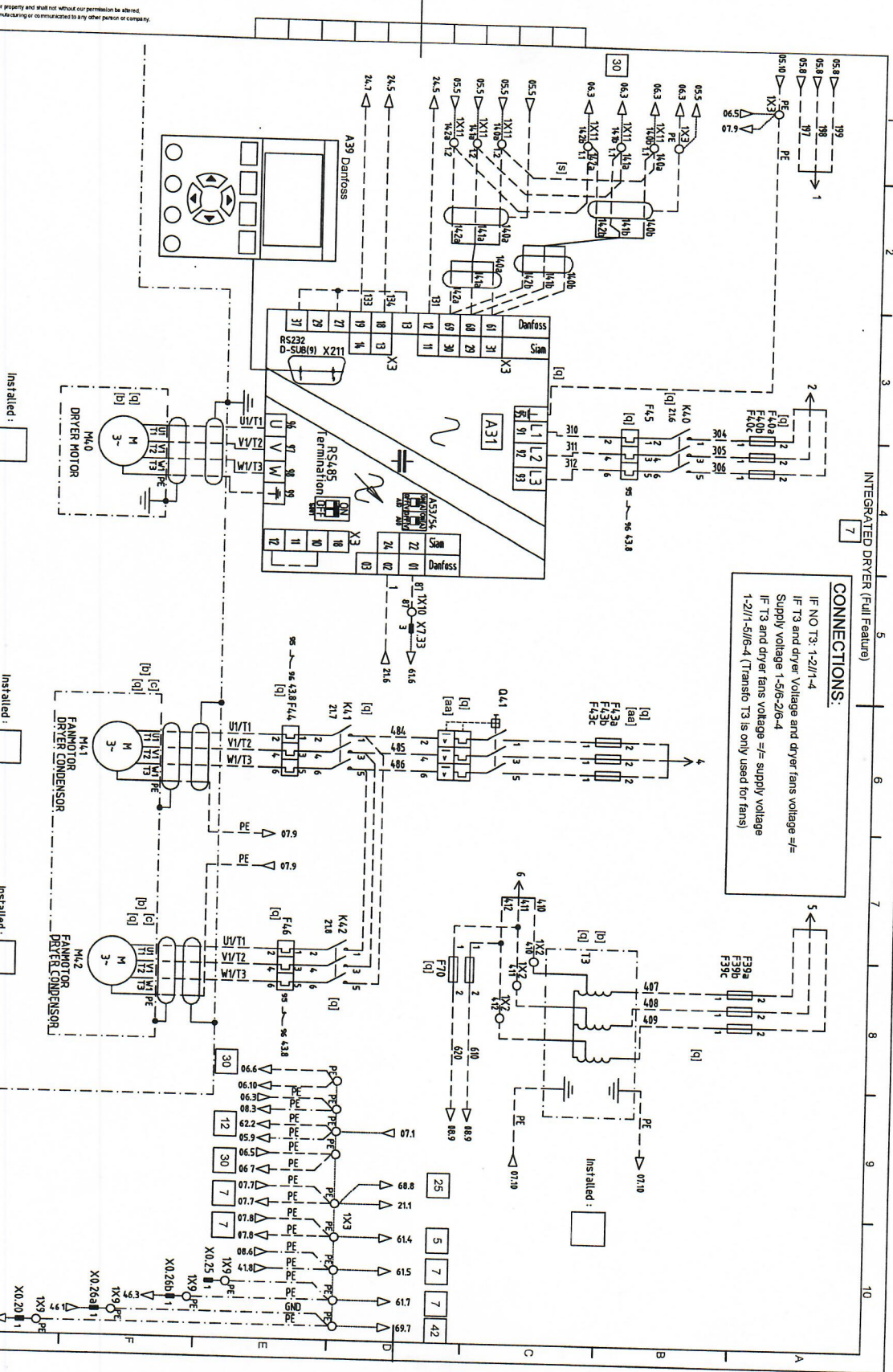
AS

Completion

9823420611-01

Sheet 07

135



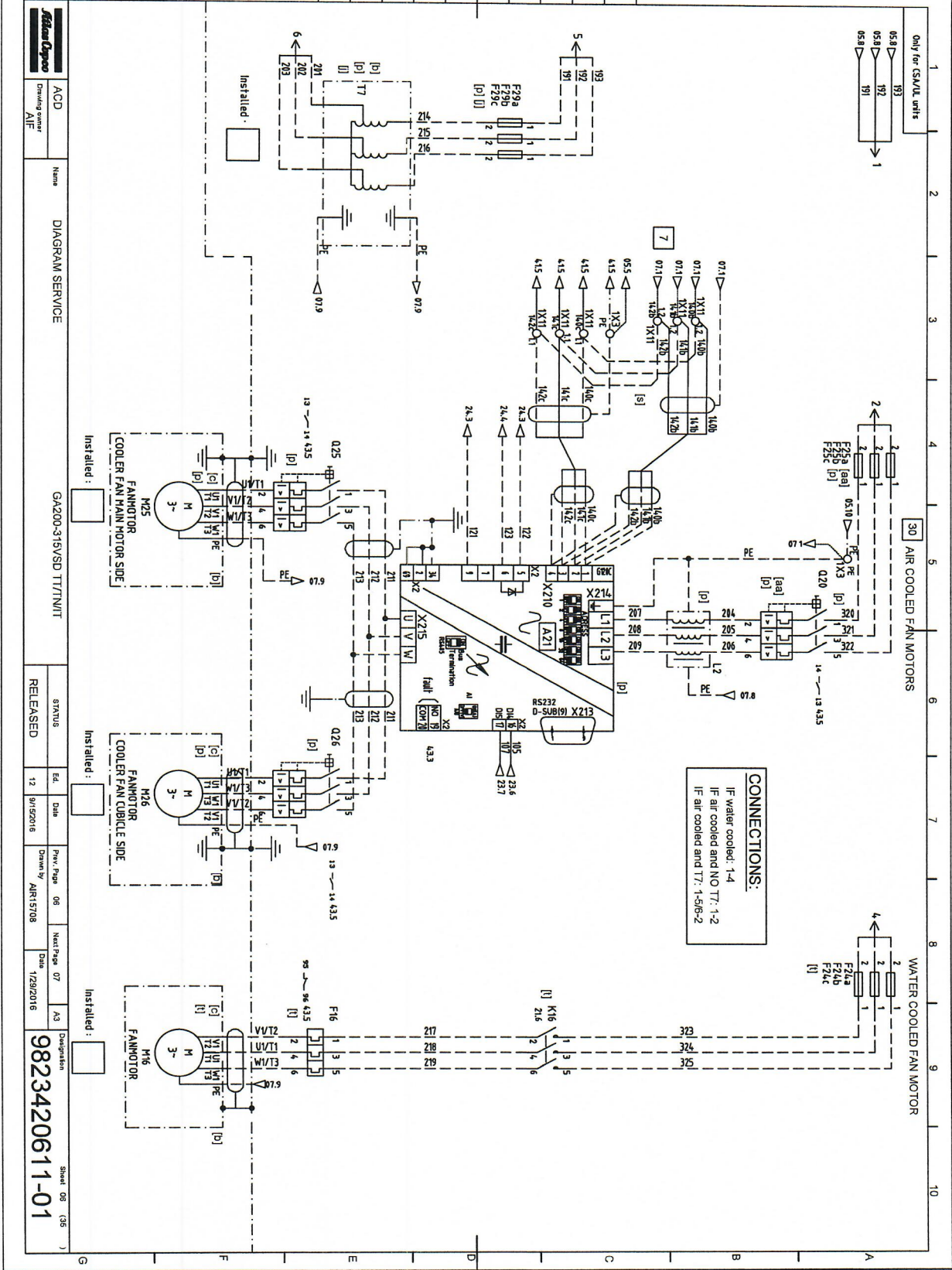
CONNECTIONS:
 IF NO T3: 1-2/1-4
 IF T3 and dryer Voltage and dryer fans voltage !=
 Supply voltage 1-5/6-2/6-4
 IF T3 and dryer fans voltage != supply voltage
 1-2/1-5/6-4 (Transfo T3 is only used for fans)

INTEGRATED DRYER (Full Feature)

7

42

This document is our property and shall not without our permission be altered, copied, used for manufacturing or communicated to any other person or company.

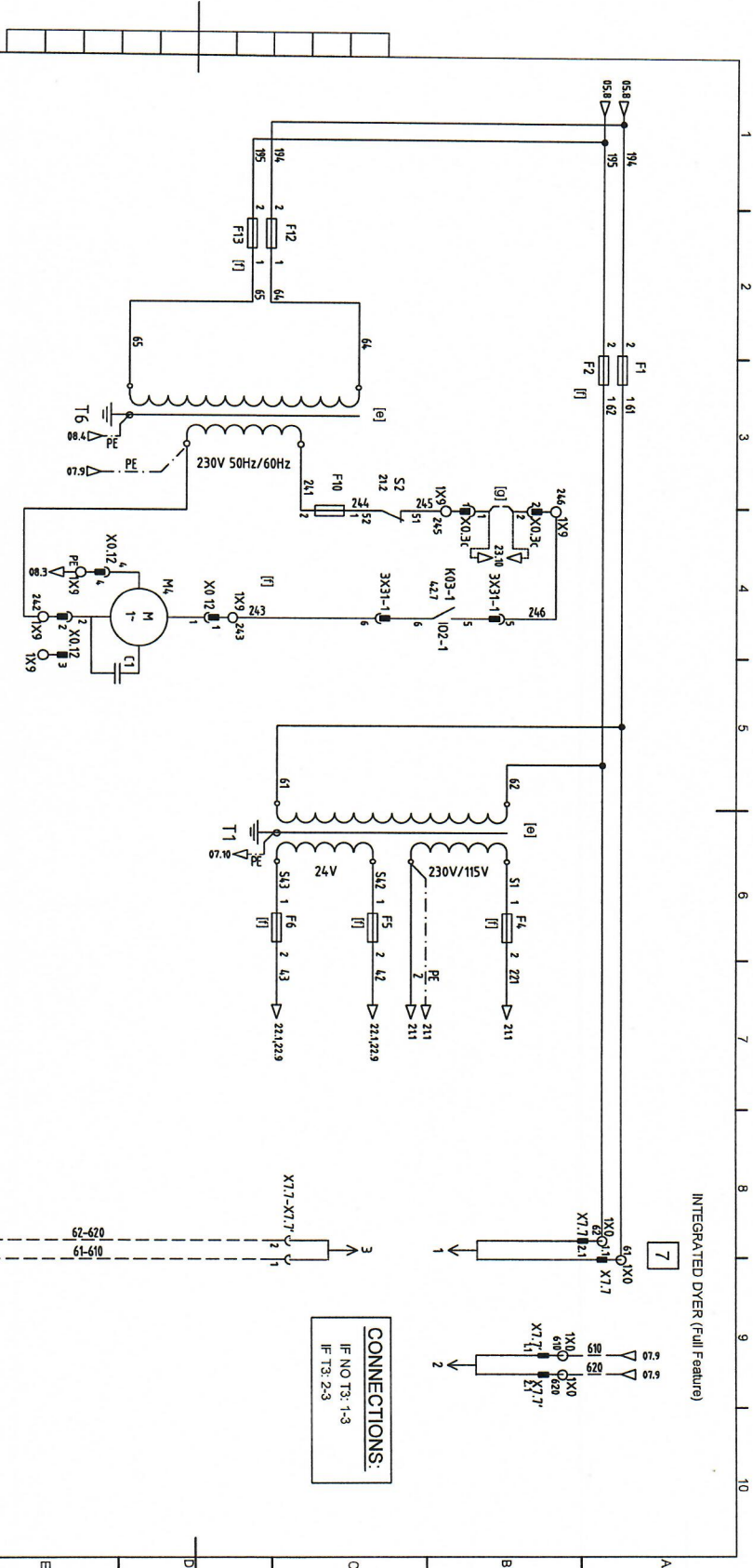


CONNECTIONS:
 IF water cooled: 1-4
 IF air cooled and NO TT: 1-2
 IF air cooled and TT: 1-5/6-2

		ACD Drawing cover AIF		Name DIAGRAM SERVICE		STRATUS RELEASED		Date 12 9/15/2016		Drawn By AIR15708		Next Page 07		Date 1/29/2016		Designation 9823420611-01		Sheet 08 (36)	
--	--	------------------------------------	--	--------------------------------	--	---------------------	--	----------------------	--	----------------------	--	-----------------	--	-------------------	--	-------------------------------------	--	---------------	--

GA200-315VSD TT/NT

This document is our property and shall not without our permission be altered, copied, used for manufacturing or communicated to any other person or company.



Agilent
Drawing Sheet
A1F

ACD

Name
DIAGRAM SERVICE

GA200-315VSD TTT/TNIT

STATUS
RELEASED

Ed. 12
Date 9/15/2016

Rev. Page 07
Drawn By AIR/5708

Next Page 21
Date 1/29/2016

Designation
9823420611-01

Sheet 08 (35)

This document is our property and shall not without our permission be altered, copied, used for manufacturing or communicated to any other person or company.

LEGEND	LOCATION	TAGNAME	PAGE	DESCRIPTION	FUNCTION
CONTROL	X174	61	CONNECTOR	DRYER AUTOMATIC DRAIN (SUPPLY)	
CONTROL	X171-X177	08	CONNECTOR	DRYER HEATER	
CONTROL	X178	61	CONNECTOR	DRYER HGBP VALVE (Y2)	
CONTROL	X179	61	CONNECTOR	DRYER HP SWITCH	
CONVERTER	X3	05	EARTH RAIL	COMPRESSOR EARTH	
CONVERTER	A1	05	R.F.I. FILTER	SUPPLY FILTER	
CONVERTER	A11	05	FREQUENCY CONVERTER	MAIN DRIVE MOTOR	
CONVERTER	A12	05	CONTROL UNIT	FREQ. CONVERTER MAIN DRIVE MOTOR	
CONVERTER	A13	05	FREQUENCY CONVERTER	RS232/485 CONVERTER	
CONVERTER	A19	05	DISPLAY (A11)	OPERATING PANEL	
CONVERTER	A31	07	FREQUENCY CONVERTER	DRYER MOTOR	
CONVERTER	A39	07	DISPLAY (A31)	OPERATING PANEL	
CONVERTER	GND0	05	GROUND	FUNCTIONAL EARTH	
CONVERTER	L1	05	COMMUTATING REACTOR	FREQUENCY CONVERTER (MAIN MOTOR)	
CONVERTER	Q41	07	CIRCUIT BREAKER	SUPPLY FANMOTORS DRYER	
CONVERTER	T6	08	TRANSFORMER	MAIN SUPPLY / 230V MAIN MOTOR COOLING FAN	
CONVERTER	X101	05	CONNECTOR (R145)	DRIVECLIA COMMUNICATION PORT (A12)	
CONVERTER	X122	05	CONNECTOR	DIGITAL INPUTS (A12)	
CONVERTER	X124	05	CONNECTOR (A12)	SUPPLY A12	
CONVERTER	X126	05	D-SUB91	PROFIBUS	
CONVERTER	X127	05	CONNECTOR (R145)	TCP/IP COMMISSIONING PORT (A12)	
CONVERTER	X128	05	D-SUB91	PROFIBUS	
CONVERTER	X129	05	D-SUB91	PROFIBUS	
CONVERTER	X2	06	CONNECTOR (A21)	TERMINAL BOARD (A21)	
CONVERTER	X210	06	CONNECTOR (A21)	RS485 COMMUNICATION	
CONVERTER	X211	07	D-SUB91	PROFIBUS A31	
CONVERTER	X213	06	D-SUB91	PROFIBUS A21	
CONVERTER	X214	06	CONNECTOR (A21)	SUPPLY IN	
CONVERTER	X215	06	CONNECTOR (A21)	SUPPLY OUT	
CONVERTER	X400	05	CONNECTOR (R145)	DRIVECLIA COMMUNICATION PORT (A11)	
CONVERTER	X41	05	CONNECTOR (A11)	MAIN MOTOR TEMPERATURE (KTY)	
CONVERTER	X42	05	CONNECTOR (A11)	24V SUPPLY (CONVERTER)	
CONVERTOR	Q20	06	CIRCUIT BREAKER	SUPPLY COOLER FANS FREQUENCY CONVERTER A21	
CUSTOMER	F0	05	FUSE	MAIN SUPPLY CUSTOMER	
CUSTOMER	S0	05	MAIN SWITCH	MAIN SUPPLY CUSTOMER	
CUSTOMER	S1	43	PUSH BUTTON	REMOTE START/STOP	
CUSTOMER	S2	23	PUSH BUTTON	REMOTE EMERGENCY STOP	
CUSTOMER	S5	43	PUSH BUTTON	REMOTE SETPOINT SELECTION	
CUSTOMER	YS1	61	SOLENOID VALVE	WATER SHUT OFF VALVE	

ACD
Drawing owner
AIF

DIAGRAM SERVICE

GA200-31SVSD TTT/INT

31X105
RELEASED
Ed. 12
Date 01/2016
Prev. Page 95
Drawn by A/R15708
Next Page 97
Date 1/29/2016

Designation
9823420611-01
Sheet 98 (35)

This document is our property and shall not without our permission be altered, copied, used for manufacturing or communicated to any other person or company.

LEGEND	TASKNAME	PAGE	DESCRIPTION	FUNCTION
CANDPY	GND1	05	GROUND	M1 CABLE GLAND
CANDPY	GND10	06	GROUND	M26 CABLE GLAND
CANDPY	GND11	07	GROUND	M40 CABLE GLAND
CANDPY	GND12	07	GROUND	M40 CABLE GLAND
CANDPY	GND13	07	GROUND	DRYER TRANSFO T3 EARTH
CANDPY	GND14	07	GROUND	DRYER TRANSFO T3 EARTH
CANDPY	GND15	44	GROUND	PT20 SCREEN
CANDPY	GND16	44	GROUND	PT102 SCREEN
CANDPY	GND17	44	GROUND	PT42 SCREEN
CANDPY	GND18	44	GROUND	POT1% SCREEN
CANDPY	GND2	05	GROUND	M1 CABLE GLAND
CANDPY	GND20	46	GROUND	LS128 SCREEN
CANDPY	GND22	63	GROUND	PT 91 SCREEN
CANDPY	GND23	63	GROUND	PT84 SCREEN
CANDPY	GND24	06	GROUND	FAN TRANSFO T7 EARTH
CANDPY	GND25	06	GROUND	FAN TRANSFO T7 EARTH
CANDPY	GND3	05	GROUND	M1 CABLE GLAND
CANDPY	GND4	05	GROUND	M1 CABLE GLAND
CANDPY	GND5	05	GROUND	M1 CABLE GLAND
CANDPY	GND6	05	GROUND	EQUIPOTENTIAL EARTH
CANDPY	GND7	06	GROUND	M25 CABLE GLAND
CANDPY	GND8	06	GROUND	M25 CABLE GLAND
CANDPY	GND9	06	GROUND	M26 CABLE GLAND
CANDPY	LS128	46	LEVEL SWITCH	AUTOMATIC CONDENSATE DRAIN
CANDPY	LSHL47	61	CONDENSATE DRAIN	DRYER AUT. CONDENSATE DRAIN
CANDPY	M1	05	DRIVE MOTOR	MAIN MOTOR
CANDPY	M16	06	FANMOTOR	CANDPY FAN WATERCOOLED
CANDPY	M25	06	FANMOTOR	COOLER AIRCOOLED
CANDPY	M26	06	FANMOTOR	COOLER AIRCOOLED
CANDPY	M40	07	DRYER MOTOR	DRYER COMPRESSOR MOTOR
CANDPY	M41	07	FANMOTOR	DRYER CONDENSOR
CANDPY	M42	07	FANMOTOR	DRYER CONDENSOR
CANDPY	POT12	44	PRESSURE TRANSDUCER	DP AIR FILTER
CANDPY	POT14	44	PRESSURE TRANSDUCER	DP OIL SEPARATOR
CANDPY	PSHH90	61	PRESSURE SWITCH	DRYER HIGH PRESSURE
CANDPY	PT20	44	PRESSURE TRANSDUCER	COMPRESSOR OUTLET
CANDPY	PT42	44	PRESSURE TRANSDUCER	OIL INJECTION ELEMENT
CANDPY	PT84	63	PRESSURE TRANSDUCER	EVAPORATING PRESSURE

ACD
Drawing owner
AIF

DIAGRAM SERVICE

GA200-31SVSD TTT/UNT

3/23/06	Ed.	Date	Drawn by	Rev. Page	Next Page	Date
RELEASED	12	01/20/16	ARR15708	92	92	1/20/2016

Designation
9823420611-01
Sheet 91 (35)

1 2 3 4 5 6 7 8 9 10

A

B

C

D

E

F

G

1 2 3 4 5 6 7 8 9 10

LEGEND	TAGNAME	PAGE	DESCRIPTION	FUNCTION
CANDPY	PT91	63	PRESSURE TRANSDUCER	DRYER CONDENSOR
CANDPY	R2	08	HEATER	DRYER CRANKCASE
CANDPY	SPM1	66	VIBRATION TRANSMITTER	MOTOR D-END
CANDPY	SPM2	66	VIBRATION TRANSMITTER	MOTOR ND-END
CANDPY	SPM3	66	VIBRATION TRANSMITTER	ELEMENT 1 MALE D-END 1
CANDPY	SPM4	66	VIBRATION TRANSMITTER	ELEMENT 1 MALE D-END 2
CANDPY	SPM5	66	VIBRATION TRANSMITTER	ELEMENT 1 MALE ND-END 1
CANDPY	SPM6	66	VIBRATION TRANSMITTER	ELEMENT 1 MALE ND-END 2
CANDPY	T3	07	AUTO TRANSFORMER	DRYER CONDENSOR FANS
CANDPY	T7	06	AUTO TRANSFORMER	COOLER FANS
CANDPY	TSHH44	23	TEMPERATURE SWITCH	OIL SEPARATOR
CANDPY	TT01	45	TEMPERATURE SENSOR	AMBIENT
CANDPY	TT111	45	TEMPERATURE SENSOR	ELEMENT 1 OUTLET
CANDPY	TT19	45	TEMPERATURE SENSOR	COMPRESSOR OUTLET
CANDPY	TT42	45	TEMPERATURE SENSOR	OIL INJECTION ELEMENT
CANDPY	TT51	45	TEMPERATURE SENSOR	COOLING AIR INLET/WATER OUTLET
CANDPY	TT85	64	TEMPERATURE SENSOR	DRYER COMPRESSOR OUTLET
CANDPY	TT89	64	TEMPERATURE SENSOR	DRYER REFRIGERANT
CANDPY	TT90	64	TEMPERATURE SENSOR	DRYER DEWPOINT LAT
CANDPY	TTER1	64	TEMPERATURE SENSOR	ENERGY RECOVERY WATER INLET
CANDPY	TTER2	64	TEMPERATURE SENSOR	ENERGY RECOVERY WATER OUTLET
CANDPY	Y1	22	SOLENOID VALVE	BLOW OFF VALVE
CANDPY	Y178	46	SOLENOID VALVE	AUT. CONDENSATE DRAIN
CANDPY	Y2	61	SOLENOID VALVE	DRYER HGBP VALVE
CANDPY	Y40	63	PROPORTIONAL VALVE	OIL BYPASS VALVE
CANDPY	Y5	61	SOLENOID VALVE	DRYER OIL INJECTION
CONNECTION BOX	F41	43	OVERLOAD RELAY	DRYER CONDENSOR FANMOTOR (M4.1)
CONNECTION BOX	F42	43	OVERLOAD RELAY	DRYER CONDENSOR FANMOTOR (M4.2)
CONNECTION BOX	R1	24	TEMPERATURE SENSOR	MAIN MOTOR
CONTROL	2X20	41	CONNECTOR E1 (D-SUB9)	CAN2 (Max 125 Kbaud)
CONTROL	2X21	41	CONNECTOR E1 (D-SUB9)	CAN1
CONTROL	2X22	41	CONNECTOR E1 (D-SUB9)	SERIAL COMMUNICATION (RS485)
CONTROL	2X24	41	CONNECTOR E1 (RJ11)	IO EXPANSION MODULES
CONTROL	2X25	41	CONNECTOR E1 (RJ45)	ETHERNET (LAN)
CONTROL	2X27	41	CONNECTOR E1	SUPPLY
CONTROL	3X23-1	42	CONNECTOR IO2-1 (RJ11)	I/O IN
CONTROL	3X24-1	42	CONNECTOR IO2-1 (RJ11)	I/O OUT
CONTROL	3X30-1	42	CONNECTOR IO2-1	AUX. RELAYS (K04-K09)

This document is our property and shall not be used without our permission to be altered, copied, used for manufacturing or communicated to any other person or company.



ACD
Drawing owner
AIF

Name
DIAGRAM SERVICE

GA200-315VSD TTT/INT

STATUS
RELEASED

REL
12

Date
9/15/2016

Drawn by
AIR15708

Next Page
93

Date
1/29/2016

43
Designation
9823420611-01

Sheet 02 (35)

This document is our property and shall not be reproduced without our permission. It is to be used for manufacturing or communication to any other person or company.

LEGEND	LOCATION	TAGNAME	PAGE	DESCRIPTION	FUNCTION
CONTROL		3X31-1	42	CONNECTOR I02-1	AUX RELAYS (5A Hbx.)
CONTROL		3X32-1	42	CONNECTOR I02-1	AUX RELAYS (K10-K15)
CONTROL		3X33-1	42	CONNECTOR I02-1	DIGITAL INPUTS
CONTROL		3X34-1	42	CONNECTOR I02-1	PRESSURE SENSORS & ANALOG IN
CONTROL		3X35-1	42	CONNECTOR I02-1	TEMPERATURE SENSORS
CONTROL		4X23	62	CONNECTOR I034-1 (R1J1)	I/O IN
CONTROL		4X24	62	CONNECTOR I034-1 (R1J1)	I/O OUT
CONTROL		4X29	62	CONNECTOR I034-1	ANALOG OUTPUTS
CONTROL		4X33	62	CONNECTOR I034-1	PRESSURE SENSORS & ANALOG INPUTS
CONTROL		4X34	62	CONNECTOR I034-1	ANALOG INPUTS
CONTROL		4X35	62	CONNECTOR I034-1	TEMPERATURE SENSORS
CONTROL		7X23	65	CONNECTOR SP4 (R1J1)	I/O IN
CONTROL		7X24	65	CONNECTOR SP4 (R1J1)	I/O OUT
CONTROL		7X36	66	CONNECTOR SP4	SUPPLY
CONTROL		8X35	22	CONNECTOR	T5
CONTROL		8X36	68	CONNECTOR E10	SUPPLY
CONTROL		8X38	68	CONNECTOR E10	ETH
CONTROL		8X38	67	CONNECTOR E10	ETH
CONTROL		8X41	68	CONNECTOR E10	ETHERNET PORT
CONTROL		8X50	67	CONNECTOR E10	ANTENNA
CONTROL		A21	06	FREQUENCY CONVERTER	COOLING FANMOTORS
CONTROL		ANTENNA	69	ANTENNA	SMARTBOX E10
CONTROL		C1	08	CAPACITOR	MAIN MOTOR COOLING FAN
CONTROL		E1	41	ELEKTRONIKON	REGUL.ATOR
CONTROL		F1	08	FUSE	TRANSFO MAIN SUPPLY (T1)
CONTROL		F10	08	FUSE	MAIN MOTOR COOLING FAN
CONTROL		F12	08	FUSE	TRANSFO MAIN MOTOR FAN (T6)
CONTROL		F13	08	FUSE	TRANSFO MAIN MOTOR FAN (T6)
CONTROL		F16	06	FUSE	SUPPLY FANMOTOR M16
CONTROL		F2	08	FUSE	TRANSFO MAIN SUPPLY (T1)
CONTROL		F24a	06	FUSE	CANOPY FAN
CONTROL		F24b	06	FUSE	CANOPY FAN
CONTROL		F24c	06	FUSE	CANOPY FAN
CONTROL		F25a	06	FUSE	FAN CONVERTER A21
CONTROL		F25b	06	FUSE	FAN CONVERTER A21
CONTROL		F25c	06	FUSE	FAN CONVERTER A21
CONTROL		F29a	06	FUSE	TRANSFO T1
CONTROL		F29b	06	FUSE	TRANSFO T1



ACD
Circuit cover
AIF

DIAGRAM SERVICE

GA200-316VSD T7/TNIT

STATUS
RELEASED

Ed. 12
Date 9/15/2016

Prev. Page 92
Drawn By ARI15708

Next Page 94
Date 1/29/2016

AS
Revision
9823420611-01

Sheet 03 (25)

This document is our property and shall not without our permission be altered, copied, used for manufacturing or communicated to any other person or company.

LEGEND	LOCATION	TAGNAME	PAGE	DESCRIPTION	FUNCTION
CONTROL	F29c	F29c	06	FUSE	TRANSFO T7
CONTROL	F39a	F39a	07	FUSE	TRANSFO T3
CONTROL	F39b	F39b	07	FUSE	TRANSFO T3
CONTROL	F39c	F39c	07	FUSE	TRANSFO T3
CONTROL	F4	F4	08	FUSE	CONTROL CIRCUIT 115V-230V
CONTROL	F40a	F40a	07	FUSE	DRYER MOTOR M4.0
CONTROL	F40b	F40b	07	FUSE	DRYER MOTOR M4.0
CONTROL	F40c	F40c	07	FUSE	DRYER MOTOR M4.0
CONTROL	F43a	F43a	07	FUSE	DRYER FAN MOTORS
CONTROL	F43b	F43b	07	FUSE	DRYER FAN MOTORS
CONTROL	F43c	F43c	07	FUSE	DRYER FAN MOTORS
CONTROL	F44	F44	07	OVERLOAD	DRYER FANMOTOR M4.1
CONTROL	F45	F45	07	OVERLOAD	COMPRESSOR DRYER
CONTROL	F46	F46	07	OVERLOAD	DRYER FANMOTOR M4.2
CONTROL	F47	F47	22	FUSE	DRYER AUTOMATIC DRAIN
CONTROL	F5	F5	08	FUSE	CONTROL CIRCUIT 24V L
CONTROL	F6	F6	08	FUSE	CONTROL CIRCUIT 24V N
CONTROL	F7	F7	21	AUTOMATIC FUSE	CUBICLE FAN 1
CONTROL	F70	F70	07	FUSE	DRYER CRANKCASE HEATER
CONTROL	F8	F8	21	AUTOMATIC FUSE	CUBICLE FAN 2
CONTROL	F9	F9	21	AUTOMATIC FUSE	CUBICLE FAN 3
CONTROL	GND19	GND19	06	GROUND	M25 SCREENING
CONTROL	GND21	GND21	06	GROUND	M26 SCREENING
CONTROL	I034-1	I034-1	62	EXPANSION MODULE	PRESS./TEMP. SENSORS & ANALOG IN/OUT
CONTROL	I02-1	I02-1	42	EXPANSION MODULE	PRESS./TEMP. SENSORS & DIGIT./ANAL. INPUTS
CONTROL	K01-1	K01-1	42	AUX. RELAY 02-1(15A Max.)	COMPRESSOR RUNNING
CONTROL	K02-1	K02-1	42	AUX. RELAY 02-1(15A Max.)	TOP FANS
CONTROL	K03-1	K03-1	42	AUX. RELAY 02-1(15A Max.)	MAIN MOTOR COOLING FAN
CONTROL	K04-1	K04-1	42	AUX. RELAY 02-1	BLOW OFF SOLENOID VALVE
CONTROL	K05-1	K05-1	42	AUX. RELAY 02-1	AUTOMATIC OPERATION
CONTROL	K06-1	K06-1	42	AUX. RELAY 02-1	GENERAL WARNING
CONTROL	K07-1	K07-1	42	AUX. RELAY 02-1	GENERAL SHUTDOWN
CONTROL	K08-1	K08-1	42	AUX. RELAY 02-1	W50 VALVE
CONTROL	K09-1	K09-1	42	AUX. RELAY 02-1	AUTOMATIC CONDENSATE DRAIN
CONTROL	K10-1	K10-1	42	AUX. RELAY 02-1	RUN ENABLE MAIN MOTOR
CONTROL	K11-1	K11-1	42	AUX. RELAY 02-1	RUN ENABLE FAN MOTOR(S)
CONTROL	K12-1	K12-1	42	AUX. RELAY 02-1	RUN ENABLE DRYER MOTOR
CONTROL	K13-1	K13-1	42	AUX. RELAY 02-1	START DRYER FAN1



ACD
Drawing owner
AIF

DIAGRAM SERVICE

GA200-316VSD TTT/UNIT

STARTED
RELEASED

Ed. 12
Date 9/15/2016

Prev. Page 93
Drawn by ARI15708

Next Page 95
Date 1/29/2016

Designation
9823420611-01

1 2 3 4 5 6 7 8 9 10

LEGEND	LOCATION	TAGNAME	PAGE	DESCRIPTION	FUNCTION
CONTROL	K14-1	42	AUX. RELAY I02-1	START DRYER FAN2	
CONTROL	K15-1	42	AUX. RELAY I02-1	HOT GAS BYPASS SOLENOID VALVE	
CONTROL	K16	21	CONTACTOR	SUPPLY FAN MOTOR M15	
CONTROL	K40	21	CONTACTOR	DRYER MAIN MOTOR M40	
CONTROL	K41	21	CONTACTOR	DRYER CONDENSOR FANMOTOR M41	
CONTROL	K42	21	CONTACTOR	DRYER CONDENSOR FANMOTOR M42	
CONTROL	L2	06	COMPUTING REACTOR	FAN CONVERTER	
CONTROL	M4	08	FANMOTOR	MAIN MOTOR COOLING FAN	
CONTROL	M5A	21	FANMOTOR	CUBICLE COOLING FAN1	
CONTROL	M5B	21	FANMOTOR	CUBICLE COOLING FAN2	
CONTROL	M5C	21	FANMOTOR	CUBICLE COOLING FAN3	
CONTROL	Q16	06	CIRCUIT BREAKER	SUPPLY FAN MOTOR M16	
CONTROL	Q25	06	CIRCUIT BREAKER	SUPPLY COOLER FAN MOTOR M25	
CONTROL	Q26	06	CIRCUIT BREAKER	SUPPLY COOLER FAN MOTOR M26	
CONTROL	S10	24	SERVICE SWITCH	MAIN FREQUENCY CONVERTER	
CONTROL	S11	24	SERVICE SWITCH	FANMOTOR FREQUENCY CONVERTER	
CONTROL	S12	24	SERVICE SWITCH	DRYERMOTOR FREQUENCY CONVERTER	
CONTROL	S2	21	PUSH BUTTON	EMERGENCY STOP	
CONTROL	SPM-MKS-100	65	SPM MODULE	SHOCK PULSE MONITORING	
CONTROL	T1	08	TRANSFORMER	MAIN SUPPLY / CONTROL CIRCUIT 230V-115V - 24V	
CONTROL	T5	22	TRANSFORMER	24V AC - 24V DC	
CONTROL	X0.12	08	CONNECTOR	MAIN MOTOR COOLING FAN	
CONTROL	X0.20	22	CONNECTOR	SOLENOID VALVE Y1	
CONTROL	X0.25	23	CONNECTOR	AIR RECEIVER TEMP. SWITCH	
CONTROL	X0.26a	46	CONNECTOR	LEVEL SWITCH AUT. CONDENSATE DRAIN	
CONTROL	X0.26b	46	CONNECTOR	VALVE AUT. CONDENSATE DRAIN	
CONTROL	X0.3a	21	CONNECTOR	EMERGENCY STOP S2	
CONTROL	X0.3b	23	CONNECTOR	EMERGENCY STOP S2	
CONTROL	X0.3c	08	CONNECTOR	EMERGENCY STOP S2	
CONTROL	X0.60A	45	CONNECTOR	SUPPLY I02-1	
CONTROL	X0.60b	64	CONNECTOR	SUPPLY I03A	
CONTROL	X0.70	61	CONNECTOR	DIGITAL INPUTS I02-1	
CONTROL	X121	64	CONNECTOR	ER TEMPERATURE SENSORS	
CONTROL	X4.0.1	63	CONNECTOR	OIL BYPASS VALVE 1	
CONTROL	X7.16	64	CONNECTOR	TEMPERATURE INPUTS I02-1	
CONTROL	X7.32a	43	CONNECTOR	DRYER FAN M41 OVERLOAD	
CONTROL	X7.32b	43	CONNECTOR	DRYER FAN M42 OVERLOAD	
CONTROL	X7.33	61	CONNECTOR	DRYER OIL INJECTION VALVE (Y5)	

This document is our property and shall not be reproduced without our permission. It is to be used for manufacturing or communicating to any other person or company.

ACD
Drawing owner
AIF

Name
DIAGRAM SERVICE

GA200-315VSD TTT/TNT

STATUS
RELEASED

Ed. 12
Date 01/20/16

Prev. Page 94
Drawn By AIR15708

Next Page 96
Date 1/20/2016

Designation
9823420611-01

Sheet 95 (35)

NOTES:

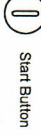
TYPE OF GLANDS



WIRES

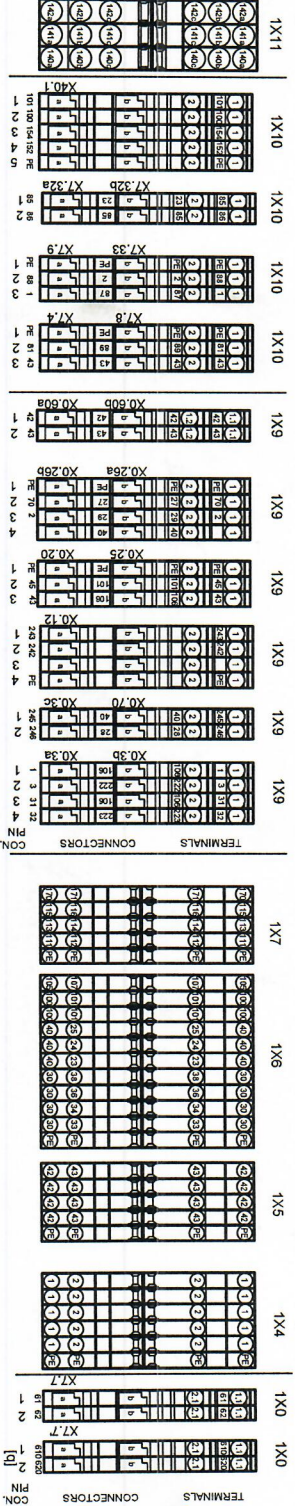
- Power wires:
 - Installed wires
 - Optional installed wires
 - Earth/ground installed wires
 - Customer installed wires
- Control/other wires:
 - Installed wires
 - Optional installed wires
 - Earth/ground installed wires
 - Customer installed wires
 - Wires installed by production
 - Installed multi wire cables
 - Component links
 - Terminal/connector links

Elektronikon buttons



Multi level terminal layout:

- 1X9 : Standard connector terminals
- 1X10 : Optional connector terminals
- a and b = NOT internally connected, when wire numbers differ between decks



[a] Component are installed according to table, x = installed component

Approval	Network	SCCR	Voltage	Q25-Q26	Q20	F25	Q16	F24	F16	F40	F45	Q41	F44-F46	F43
lec	TT/7N	SSCCR	380V	x	x	x	x	x	x	x	x	x	x	x
lec	TT/7N	SSCCR	400V	x	x	x	x	x	x	x	x	x	x	x
lec	TT/7N	SSCCR	440V	x	x	x	x	x	x	x	x	x	x	x
lec	TT/7N	SSCCR	500V	x	x	x	x	x	x	x	x	x	x	x
lec	TT/7N	SSCCR	525V	x	x	x	x	x	x	x	x	x	x	x
lec	TT/7N	SSCCR	550V	x	x	x	x	x	x	x	x	x	x	x
lec	TT/7N	SSCCR	690V	x	x	x	x	x	x	x	x	x	x	x
lec	TT/7N	HSCCR	380V	x	x	x	x	x	x	x	x	x	x	x
lec	TT/7N	HSCCR	400V	x	x	x	x	x	x	x	x	x	x	x
lec	TT/7N	HSCCR	440V	x	x	x	x	x	x	x	x	x	x	x
lec	TT/7N	HSCCR	500V	x	x	x	x	x	x	x	x	x	x	x
lec	TT/7N	HSCCR	525V	x	x	x	x	x	x	x	x	x	x	x
lec	TT/7N	HSCCR	550V	x	x	x	x	x	x	x	x	x	x	x
lec	TT/7N	HSCCR	690V	x	x	x	x	x	x	x	x	x	x	x
lec	IT	SSCCR	380V-690V	x	x	x	x	x	x	x	x	x	x	x
lec	IT	HSCCR	380V-690V	x	x	x	x	x	x	x	x	x	x	x
CSA/UL	TT/7N	SCCR	460V	x	x	x	x	x	x	x	x	x	x	x
CSA/UL	TT/7N	SCCR	575V	x	x	x	x	x	x	x	x	x	x	x
CSA/UL	TT/7N	HSCCR	460V	x	x	x	x	x	x	x	x	x	x	x
CSA/UL	TT/7N	HSCCR	575V	x	x	x	x	x	x	x	x	x	x	x
CSA/UL	IT	SCCR	460V	x	x	x	x	x	x	x	x	x	x	x
CSA/UL	IT	SCCR	575V	x	x	x	x	x	x	x	x	x	x	x

PLUG IN KEY TABLE & CONNECTORS

Pin numbers to be removed at the female connector as shown on this drawing. On the opposite connector, coding key 1088 0031 01 has to be installed at the same place



* Removed key(s)

CONNECTORS/TERMINALS
Male/terminal Female

1088 0031 66[S] X12: 1088 0032 04[S]
1088 0031 67[S] X7: 16(1088 0032 05[S])



ACD Drawing owner
AIF

Name DIAGRAM SERVICE

GA200-315VSD TT/7N/IT

STATUS RELEASED

Ed. 12 Date 9/15/2016

Drawn by AIR15/708

Next Page Date 1/29/2016

Designation 9823420611-01

Sheet 08 (35)

This document is our property and shall not be reproduced without our permission. Any copies, used for manufacturing or communicated to any other person or company.

STRIP-ID	TERM	WIRENO	INST	LOC	REF	SH
1X4	22	1	CTRL CIRCUIT 230VAC (L)	CONTROL	6	21
1X4	22	2	CTRL CIRCUIT 230VAC (N)	CONTROL	6	21
1X5	11	42	CTRL CIRCUIT 24VAC (L)	CONTROL	6	22
1X5	11	43	CTRL CIRCUIT 24VAC (N)	CONTROL	6	22
1X5	12	42	CTRL CIRCUIT 24VAC (L)	CONTROL	6	22
1X5	12	43	CTRL CIRCUIT 24VAC (N)	CONTROL	6	22
1X5	13	42	CTRL CIRCUIT 24VAC (L)	CONTROL	7	22
1X5	13	43	CTRL CIRCUIT 24VAC (N)	CONTROL	7	22
1X5	14	42	CTRL CIRCUIT 24VAC (L)	CONTROL	8	22
1X5	14	43	CTRL CIRCUIT 24VAC (N)	CONTROL	8	22
1X5	21	42	CTRL CIRCUIT 24VAC (L)	CONTROL	8	22
1X5	21	43	CTRL CIRCUIT 24VAC (N)	CONTROL	8	22
1X6	100	100	24VDC SUPPLY	CONTROL	4	05
1X6	100	100	24VDC SUPPLY	CONTROL	4	05
1X6	101	101	24VDC SUPPLY	CONTROL	4	05
1X6	101	101	24VDC SUPPLY	CONTROL	4	05
1X6	105	105	STO PROTECTION	CONTROL	6	23
1X6	107	107	STO PROTECTION	CONTROL	7	23
1X6	23	23	OVERL DRYER FANS	CONTROL	8	43
1X6	24	24	HIGH PRESS. SHUT.	CONTROL	8	43
1X6	25	25	HIGH PRESS. SHUT.	CONTROL	9	43
1X6	30	30	FAIL T FAN CONV.	CONTROL	3	43
1X6	30	30	OVERL. FANMOTORS	CONTROL	4	43
1X6	30	30	REN. SETPOINT SEL.	CONTROL	4	43
1X6	30	30	REN. START/STOP	CONTROL	3	43
1X6	33	33	REN. START/STOP	CONTROL	3	43
1X6	34	34	FAIL T FAN CONV.	CONTROL	3	43
1X6	36	36	REN. SETPOINT SEL.	CONTROL	4	43
1X6	38	38	OVERL. FANMOTORS	CONTROL	5	43
1X6	40	40	HIGH PRESS. SHUT.	CONTROL	9	43
1X6	40	40	OVERL DRYER FANS	CONTROL	8	43
1X7	111	111	AUT. OPERATION	CONTROL	1	23
1X7	112	112	AUT. OPERATION	CONTROL	1	23
1X7	113	113	GEN. WARNING	CONTROL	2	23
1X7	114	114	GEN. WARNING	CONTROL	2	23
1X7	115	115	GEN. SHUTDOWN	CONTROL	3	23
1X7	116	116	GEN. SHUTDOWN	CONTROL	3	23
1X7	170	170	MOTOR RUNNING	CONTROL	4	23

STRIP-ID	TERM	WIRENO	INST	LOC	REF	SH
1X7	171	171	MOTOR RUNNING	CONTROL	4	23
1X9	1	1	EMERG. STOP SZ(IX0.3a)	CONTROL	6	23
1X9	1	1	EMERG. STOP SZ(IX0.3a)	CONTROL	2	21
1X9	1	243	MAIN MOTOR FAN (X0.12)	CONTROL	4	08
1X9	1	245	EMERG. STOP SZ(IX0.3a)	CONTROL	4	08
1X9	1	40	DRYER AUX.R.DRAIN(X0.70)	CONTROL	10	07
1X9	1	PE	AIR R. TRP-SWITCH(X0.25)	CONTROL	10	07
1X9	1	PE	AUT. COND. DRAIN(X0.26a)	CONTROL	10	07
1X9	1	PE	AUT. COND. DRAIN(X0.26b)	CONTROL	10	07
1X9	1	PE	SOLENOID VALVE Y(IX0.20)	CONTROL	10	07
1X9	11	42	SUPPLY (02/034)(X0.60a)	CONTROL	4	22
1X9	12	43	SUPPLY (02/034)(X0.60a)	CONTROL	4	22
1X9	2	1	EMERG. STOP SZ(IX0.3a)	CONTROL	6	23
1X9	2	1	EMERG. STOP SZ(IX0.3a)	CONTROL	2	21
1X9	2	222	EMERG. STOP SZ(IX0.3a)	CONTROL	6	23
1X9	2	242	EMERG. STOP SZ(IX0.3a)	CONTROL	4	08
1X9	2	246	EMERG. STOP SZ(IX0.3a)	CONTROL	4	08
1X9	2	27	AUT. COND. DRAIN(X0.26a)	CONTROL	9	43
1X9	2	28	DRYER AUX.R.DRAIN(X0.70)	CONTROL	10	07
1X9	2	45	SOLENOID VALVE Y(IX0.20)	CONTROL	3	22
1X9	2	70	AUT. COND. DRAIN(X0.26a)	CONTROL	3	21
1X9	2.1	42	SUPPLY (02/034)(X0.60b)	CONTROL	5	22
1X9	2.2	43	SUPPLY (02/034)(X0.60b)	CONTROL	5	22
1X9	3		EMERG. STOP SZ(IX0.3a)	CONTROL	7	23
1X9	3		MAIN MOTOR FAN (X0.12)	CONTROL	4	08
1X9	3	2	AUT. COND. DRAIN(X0.26b)	CONTROL	3	21
1X9	3	29	AUT. COND. DRAIN(X0.26a)	CONTROL	2	43
1X9	3	31	EMERG. STOP SZ(IX0.3a)	CONTROL	2	43
1X9	3	43	SOLENOID VALVE Y(IX0.20)	CONTROL	3	22
1X9	3	5	AIR R. TRP-SWITCH(X0.25)	CONTROL	6	23
1X9	4	223	EMERG. STOP SZ(IX0.3b)	CONTROL	7	23
1X9	4	242	MAIN MOTOR FAN (X0.12)	CONTROL	4	08
1X9	4	32	EMERG. STOP SZ(IX0.3a)	CONTROL	2	43
1X9	4	40	AUT. COND. DRAIN(X0.26a)	CONTROL	9	43
1X9	4	70	AUT. COND. DRAIN(X0.26b)	CONTROL	3	46

ACD Name: DIAGRAM SERVICE
 Drawing owner: AIF
 GA200-315VSD TTT/NTT

3/3/2016
 RELEASED
 12
 9/15/2016
 Date
 9/15/2016
 Date
 1/29/2016
 Date
 9823420611-01
 Designation
 Sheet 82 (35)

This document is our property and shall not without our permission be altered, copied, used for manufacturing or communicated to any other person or company.

Affix Corp.
Drawing owner

ACD
Drawing owner
AIF

Name
DIAGRAM SERVICE

GA200-315VSD TTT/NTT

STATUS
RELEASED

REL. 12

Date 9/15/2016

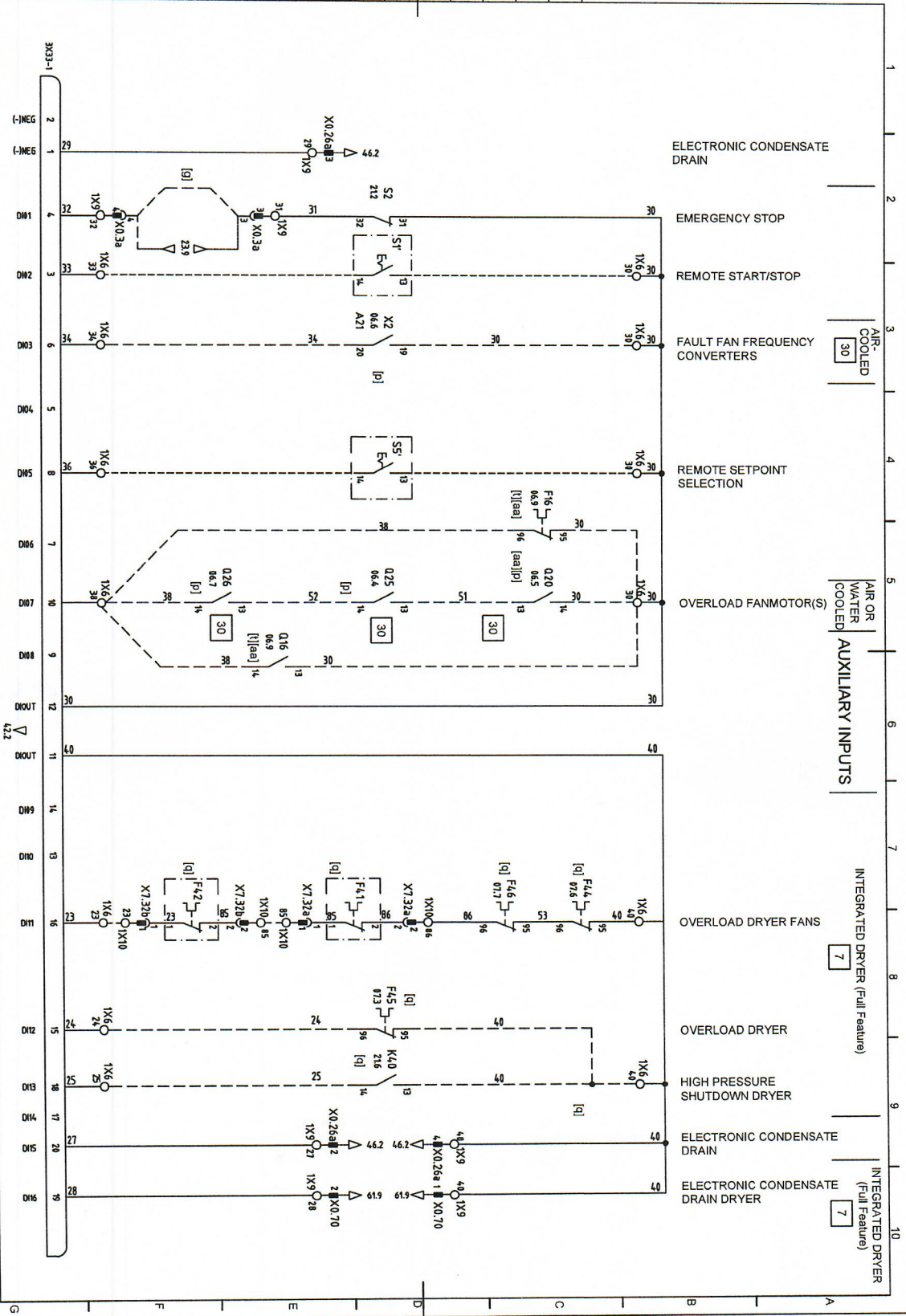
Prev. Page 42
Drawn by AIR15708

Next Page 44
Date 1/29/2016

AS

Designation
9823420611-01

Sheet 43 (35)

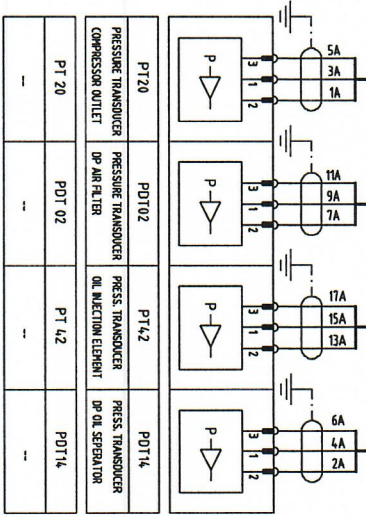
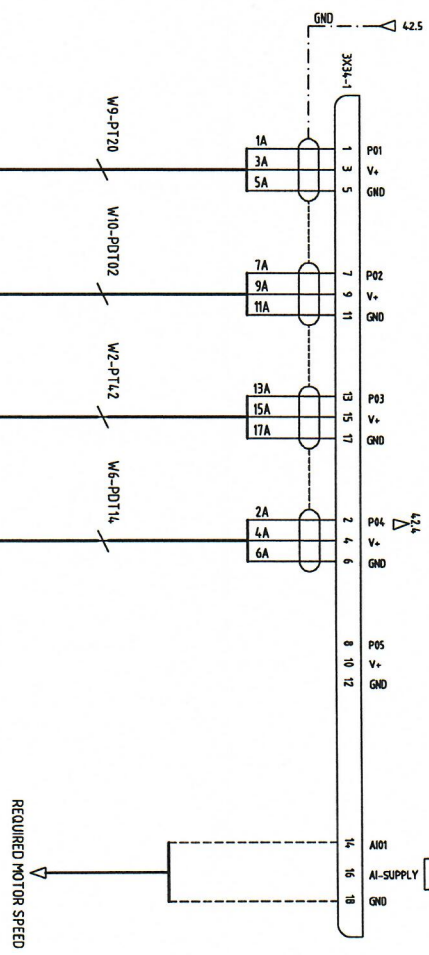
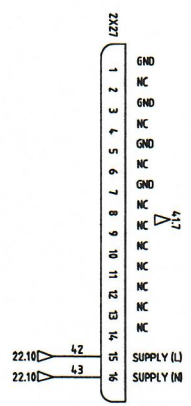


1
2
3
4
5
6
7
8
9
10

1
2
3
4
5
6
7
8
9
10
11
12
13
14
15
16
17
18
19
20
21
22
23
24
25
26
27
28
29
30
31
32
33
34
35
36
37
38

A
B
C
D
E
F
G

This document is our property and shall not without our permission be altered, copied, used for manufacturing or communicated to any other person or company.



PT20	PDT02	PT42	PDT14
PRESSURE TRANSDUCER COMPRESSOR OUTLET	PRESSURE TRANSDUCER DP AIR FILTER	PRESS. TRANSDUCER OIL INJECTION ELEMENT	PRESS. TRANSDUCER DP OIL SEPARATOR
PT 20	PDT 02	PT 42	PDT 14
--	--	--	--

Option

		DIAGRAM SERVICE	
ACD	Drawing owner	Name	
ALF		GA200-315VSD TT/TN/TT	
STATUS	Ed.	Date	Rev. Page
RELEASED	12	9/15/2016	43
	Drawn By	Date	Next Page
	ALR15708	1/29/2016	45
			AS
Designation			Sheet 44 (35)
9823420611-01			

This document is our property and shall not without our permission be altered, copied, used for manufacturing or communicated to any other person or company.



ACD
Drawing owner
AIF

DIAGRAM SERVICE

GA200-316VSD T17N1IT

STARTED
RELEASED

Ed. 12

Date 30/05/2016

Drawn By AIR15708

Next Page 41

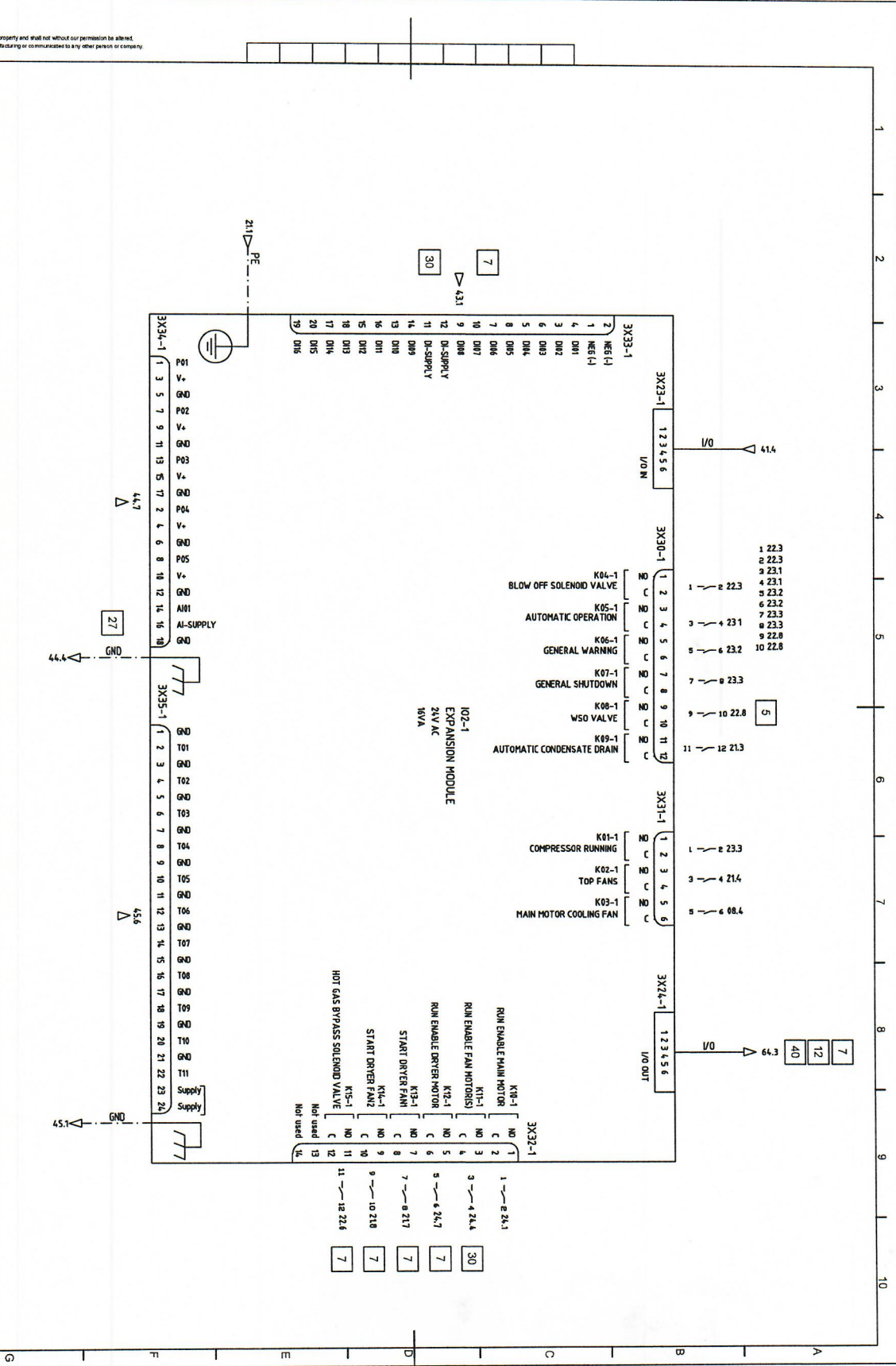
Date 1/29/2016

AS

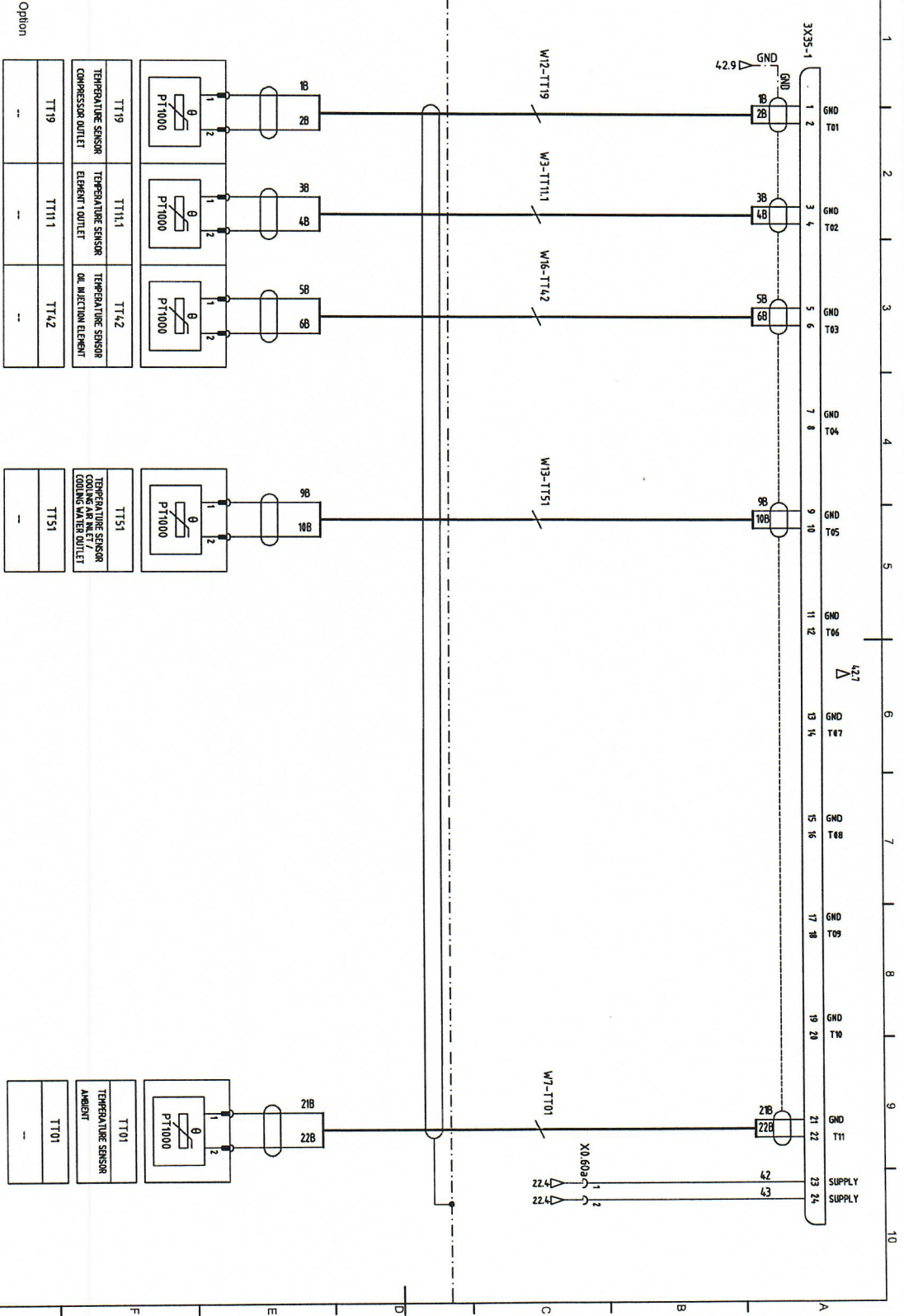
Designation

9823420611-01

Sheet 42 (35)



This document is our property and shall not, without our permission be altered, copied, used for manufacturing or communicated to any other person or company.



Alcon Cyber Drawing owner: AIF		Name: DIAGRAM SERVICE		GA200-318VSD TT/TN/MT		STATUS: RELEASED		ED: 12		Date: 9/15/2016		Pwr Page: 44		Next Page: 46		AS: 1/29/2016		Designation: 9823420611-01		Sheet: 45 (35)	
--	--	-----------------------	--	-----------------------	--	------------------	--	--------	--	-----------------	--	--------------	--	---------------	--	---------------	--	----------------------------	--	----------------	--

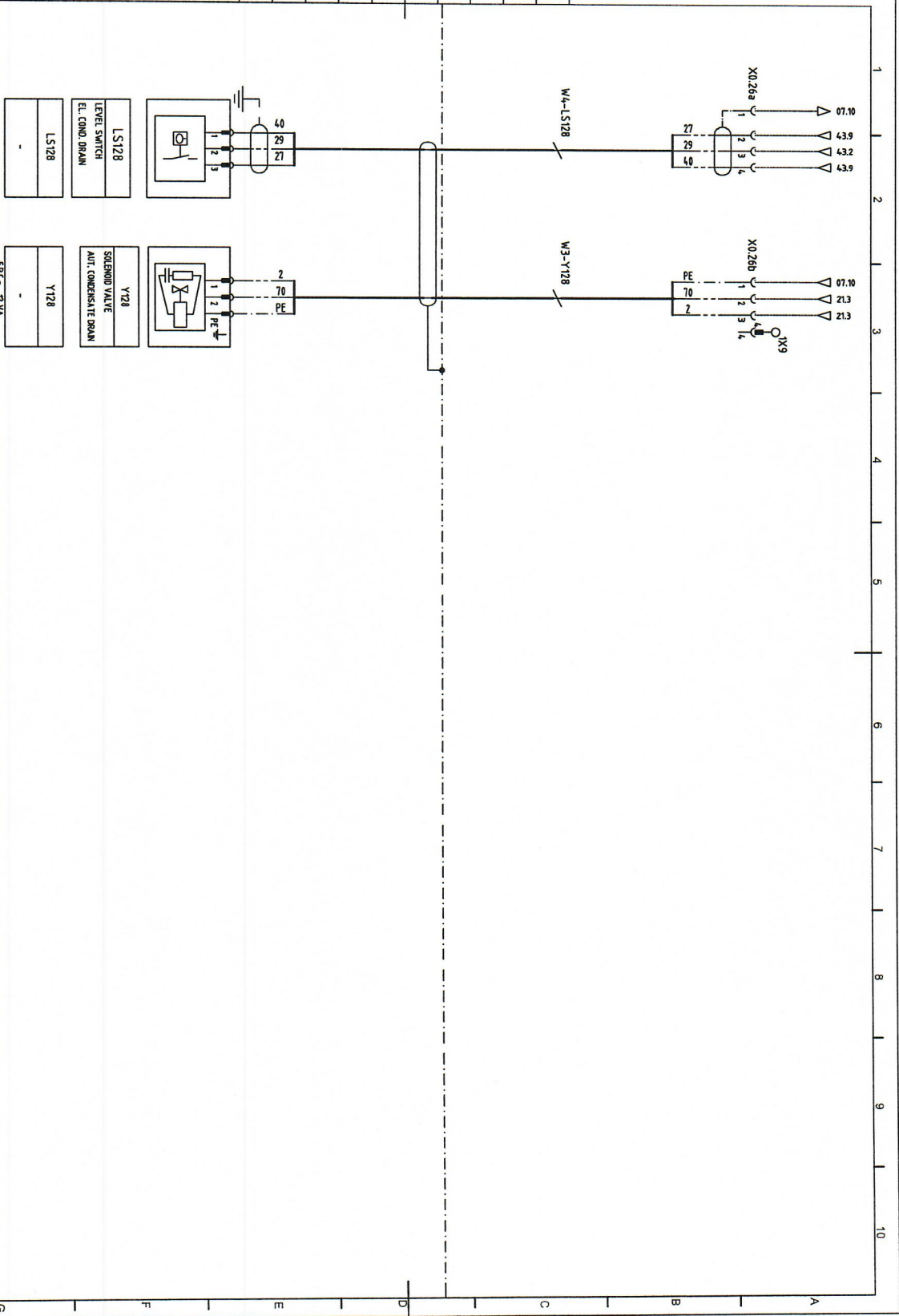
TT19	TEMPERATURE SENSOR COMPRESSOR OUTLET	PT1000
TT11.1	TEMPERATURE SENSOR ELEMENT 1 OUTLET	PT1000
TT42	TEMPERATURE SENSOR OIL INJECTION ELEMENT	PT1000

TT51	TEMPERATURE SENSOR COOLING AIR INLET / COOLING WATER OUTLET	PT1000
------	---	--------

TT01	TEMPERATURE SENSOR AMBIENT	PT1000
------	----------------------------	--------

Option

This document is our property and shall not, without our permission be altered, copied, used for manufacturing or communicated to any other person or company.



ACD
Drawing cover
AIF

Name
DIAGRAM SERVICE

GA200-316VSD T1/TN/IT

STATUS
RELEASED

Ed. 12
Date 9/15/2016

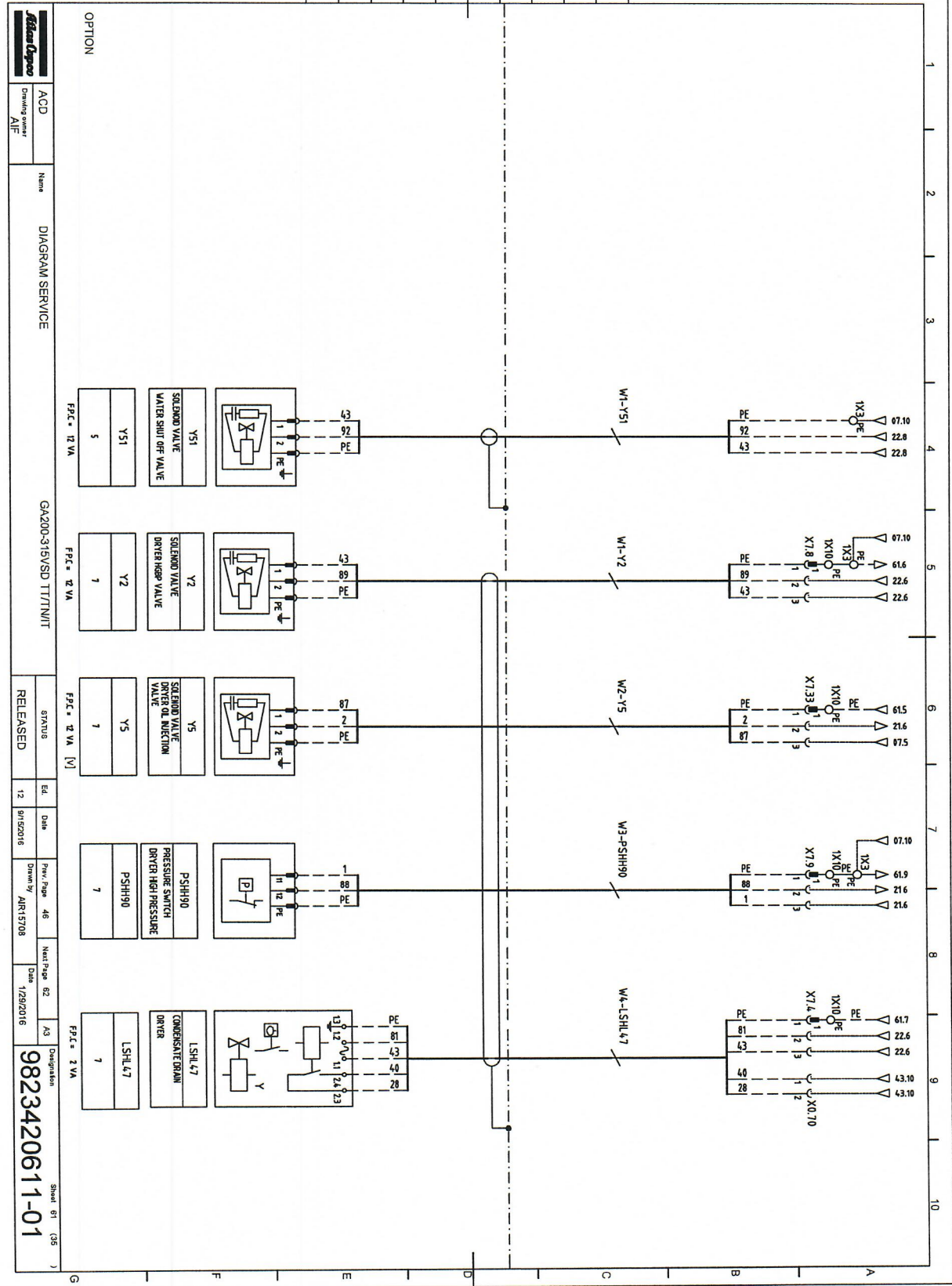
Rev. Page 45
Drawn by ARI-15708

Next Page 81
Date 1/29/2016

AS
Disposition
9823420611-01

Sheet 48 (35)

This document is our property and shall not without our permission be altered, copied, used for manufacture or communicated to any other person or company.



		ACD Drawing owner		AIJ Drawing owner	
Agilent		DIAGRAM SERVICE		GA200-315VSD TTT/NIT	
OPTION		Y51 SOLENOID VALVE WATER SHUT OFF VALVE P.P.C. = 12 VA 5		Y2 SOLENOID VALVE DRIVER HIGH VALVE P.P.C. = 2 VA 1	
Y5 SOLENOID VALVE DRIVER OIL INJECTION VALVE P.P.C. = 2 VA [V] 1		PSHH90 PRESSURE SWITCH DRIVER HIGH PRESSURE P.P.C. = 1 VA 7		LSHL47 CONDENSATE DRAIN DRIVER P.P.C. = 3 VA 7	
STATUS RELEASED		REL 12		Date 9/15/2016	
Drawn by AIR15708		Mat Page 46		Date 1/29/2016	
Designation 9823420611-01		Sheet 81 (35)			

This document is our property and shall not without our permission be altered, copied, used for manufacturing or communicated to any other person or company.



ACD
Drawing Owner
AIF

Name
DIAGRAM SERVICE

GA200-315VSD TTT/UNIT

STATUS
RELEASED

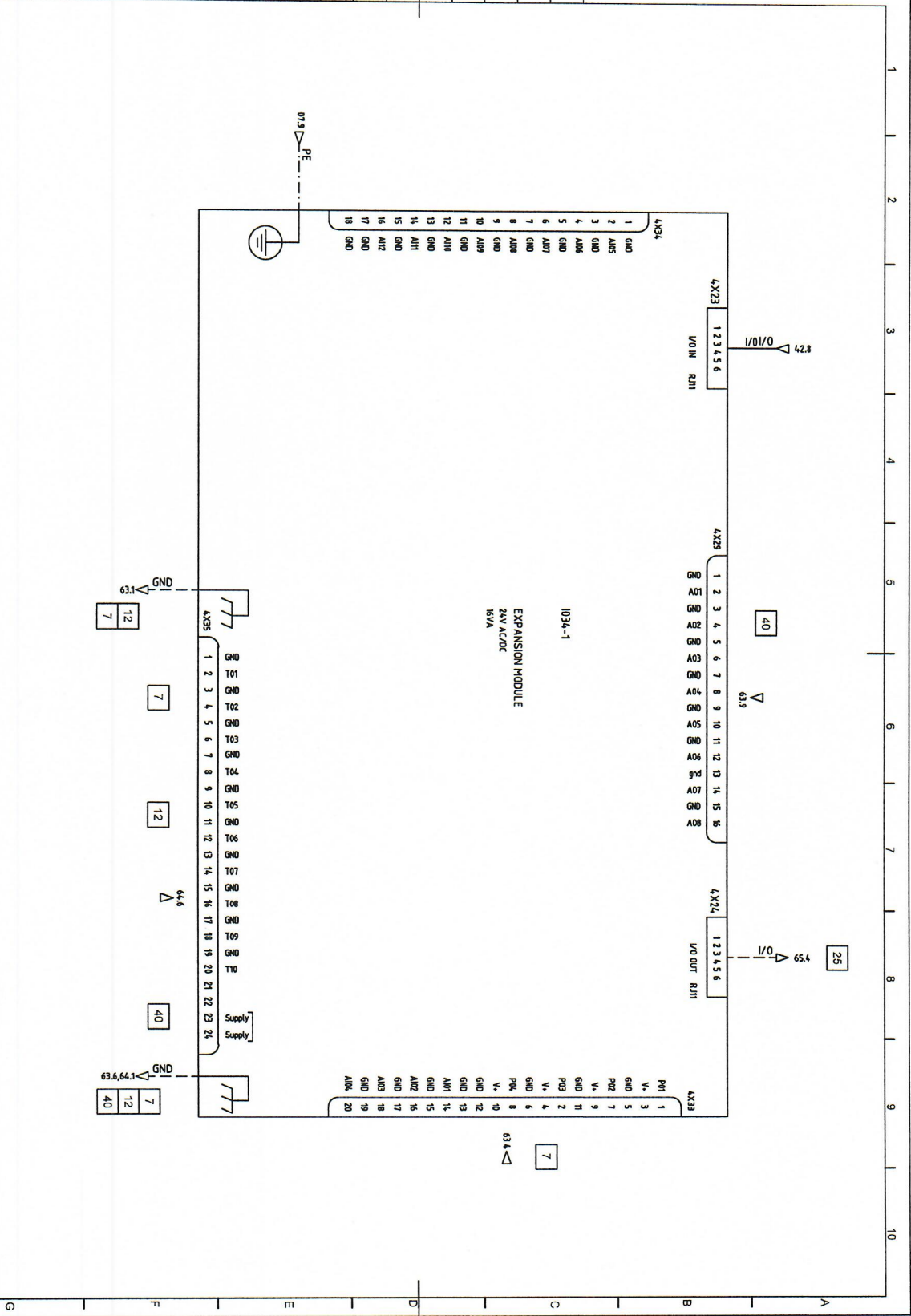
Ed. 12
Date 9/15/2016

Drawn By
AIR15708

Next Page 03
Date 1/29/2016

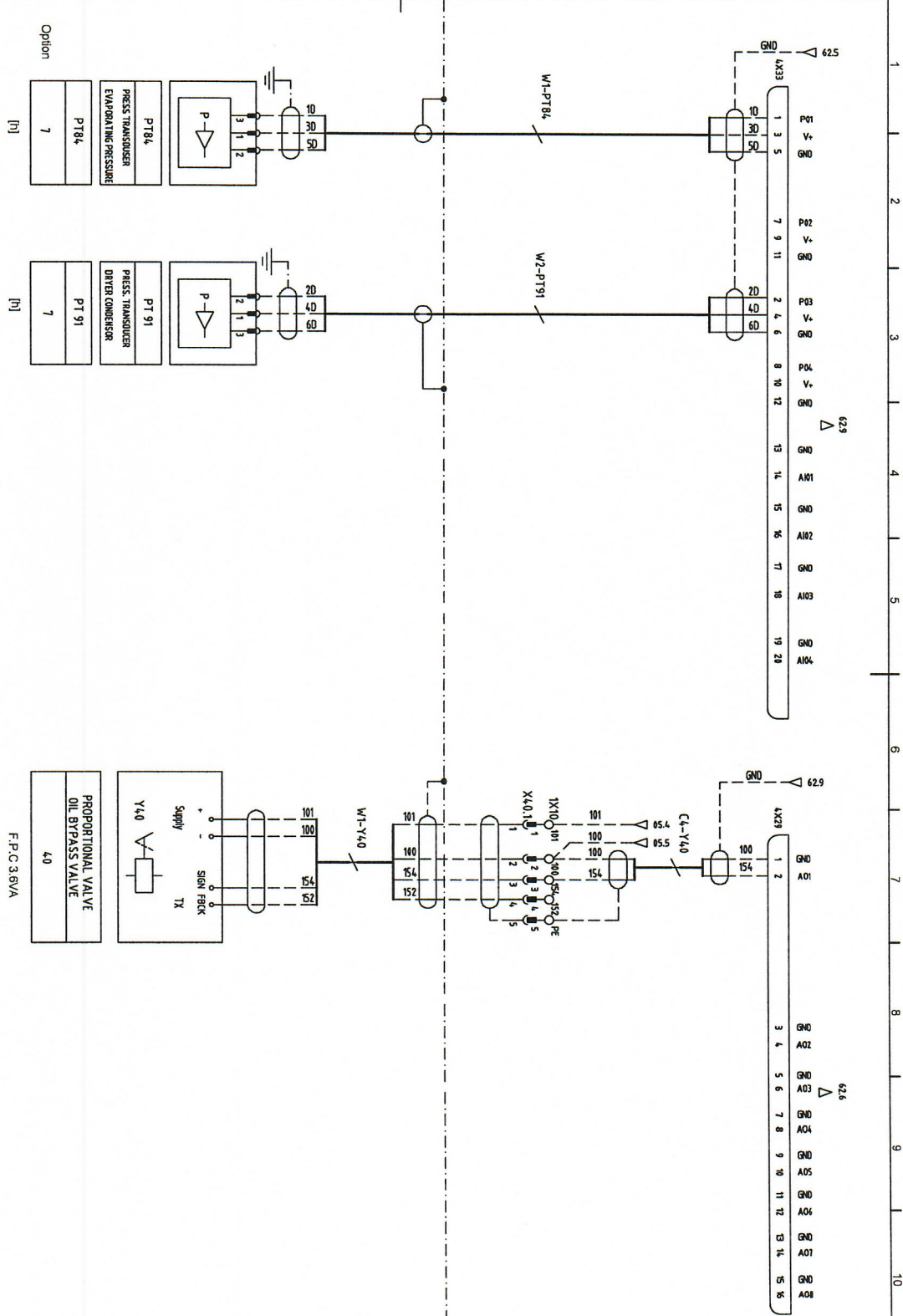
Designation
9823420611-01

Sheet 02 (35)



1	2	3	4	5	6	7	8	9	10
A	B	C	D	E	F	G			

This document is our property and shall not without our permission be altered, copied, used for manufacturing or communicated to any other person or company.



		Name DIAGRAM SERVICE		GA200-315VSD TTT/NT/IT		STATUS		Released		Designation	
Drawing owner AIF		Name		GA200-315VSD TTT/NT/IT		12		12		9823420611-01	
ACD		Name		GA200-315VSD TTT/NT/IT		12		12		9823420611-01	
Drawing owner AIF		Name		GA200-315VSD TTT/NT/IT		12		12		9823420611-01	
ACD		Name		GA200-315VSD TTT/NT/IT		12		12		9823420611-01	
Drawing owner AIF		Name		GA200-315VSD TTT/NT/IT		12		12		9823420611-01	

This document is our property and shall not without our permission be altered, copied, used for manufacturing or communicated to any other person or company.



ACD
Drawing owner
AIF

Name
DIAGRAM SERVICE

GA200-315VSD TT/TN/IT

STATUS
RELEASED

Ed. Date
12 9/15/2016

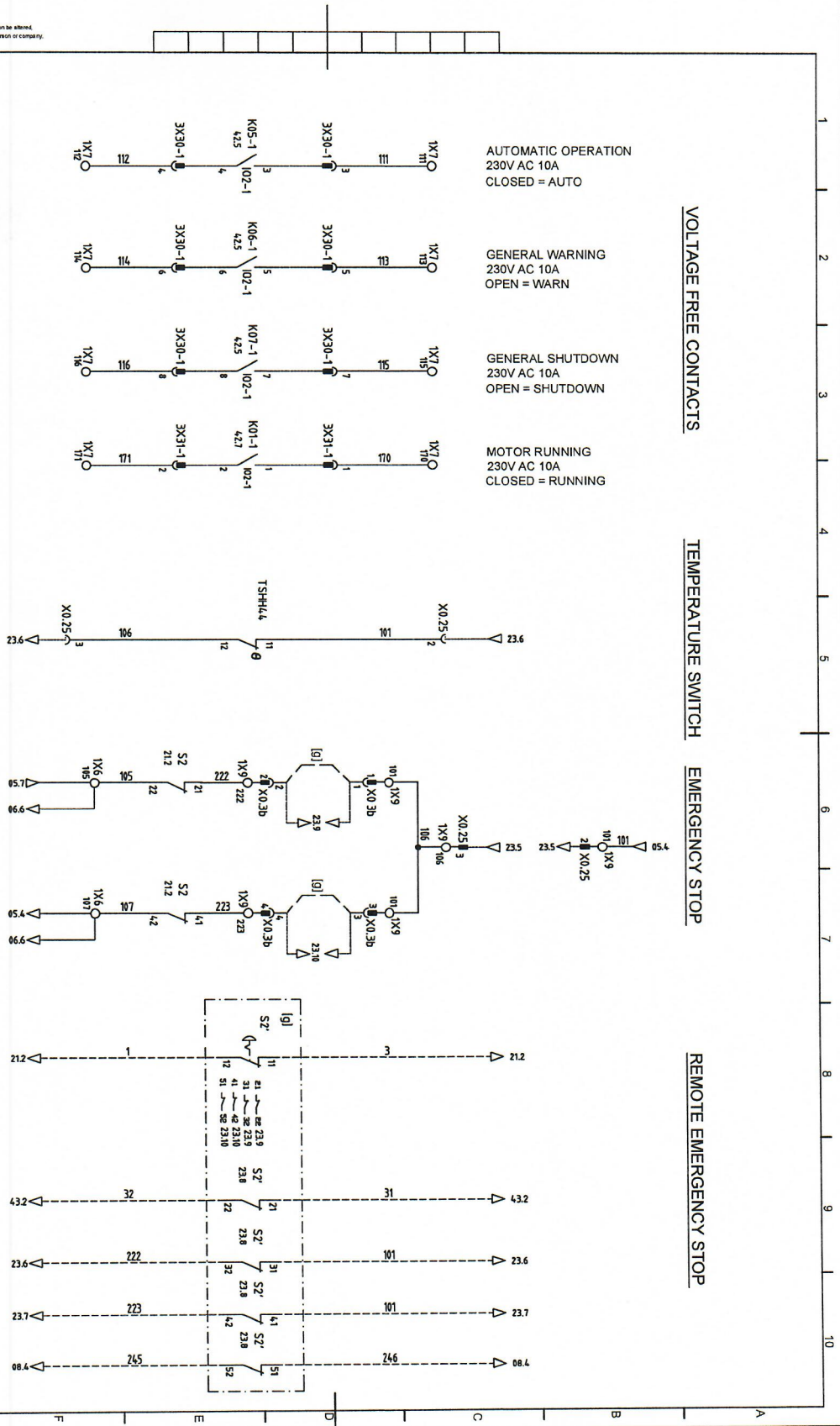
Proj. Page 22
Drawn by AFR15708

Next Page 24
Date 1/29/2016

A3

Designation
9823420611-01

Sheet 23 (56)



AUTOMATIC OPERATION
230V AC 10A
CLOSED = AUTO

GENERAL WARNING
230V AC 10A
OPEN = WARN

GENERAL SHUTDOWN
230V AC 10A
OPEN = SHUTDOWN

MOTOR RUNNING
230V AC 10A
CLOSED = RUNNING

VOLTAGE FREE CONTACTS

TEMPERATURE SWITCH

EMERGENCY STOP

REMOTE EMERGENCY STOP

1 2 3 4 5 6 7 8 9 10

A B C D E F G

This document is our property and shall not without our permission be altered, copied, used for manufacturing or communicated to any other person or company.



ACD
Drawing owner
AIF

Name

DIAGRAM SERVICE

GA200-31SVSD TT/NT

STATUS

RELEASED

EL. 12

Date 9/15/2016

Proj. Page 24

Drawn by ARR15708

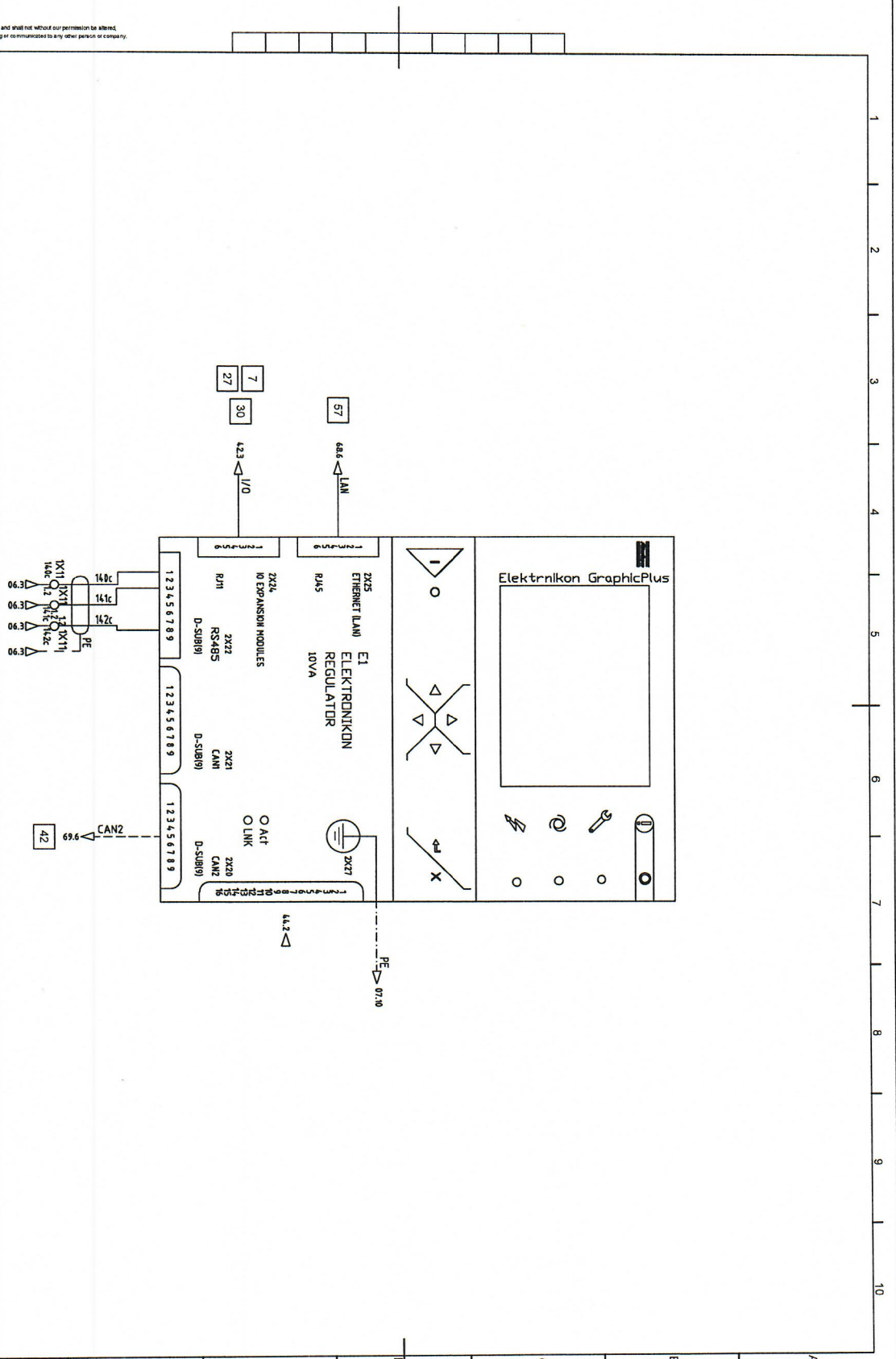
Date 1/29/2016

Designation

9823420611-01

Sheet 41

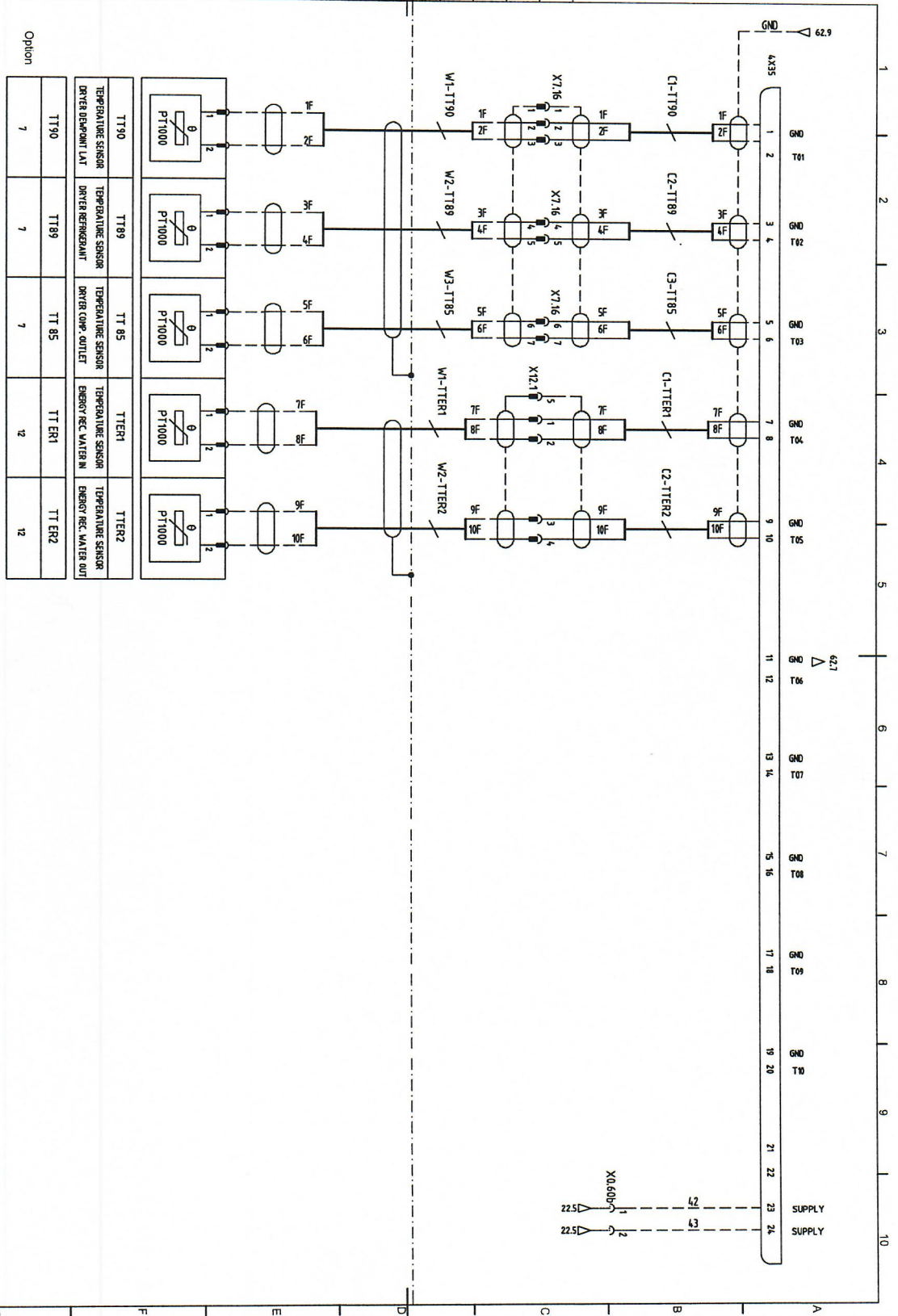
(35)



1 2 3 4 5 6 7 8 9 10

A B C D E F G

This document is our property and shall not without our permission be altered, copied, used for manufacturing or communication to any other person or company.



		GA200-318VSD TT/TN/WT	
ACD Drawing owner AIF	Name DIAGRAM SERVICE	STATUS RELEASED	ED. 12
		Date 9/15/2016	Drawn by ARI15708
		Prev. Page 03	Next Page 05
		Date 1/29/2016	AS
Disposition 9823420611-01		Sheet 64 (35)	

This document is our property and shall not without our permission be altered, copied, used for manufacturing or communicated to any other person or company.



ACD
Drawing owner
AIF

Name
DIAGRAM SERVICE

GA200-315VSD TT/TN/IT

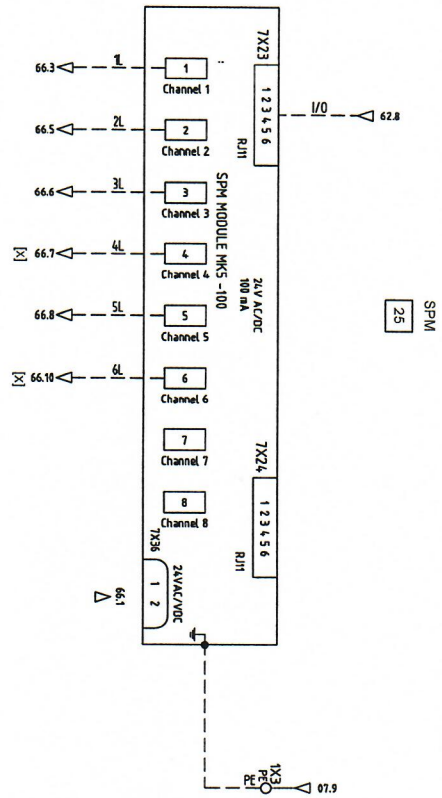
STATUS
RELEASED

Ed. 12
Date 9/15/2016

Drawn By AIR15708

Next Page 88
Date 1/29/2016

AS
Designation
9823420611-01
Sheet 65 (35)



1 2 3 4 5 6 7 8 9 10

A B C D E F G

This document is our property and shall not without our permission be altered, copied, used for manufacturing or communicated to any other person or company.



ACD
Drawing owner
AJF

Name

DIAGRAM SERVICE

GA200-319VSD TT/TN/IT

STATUS
RELEASED

Ed. 12
Date 31/12/2016

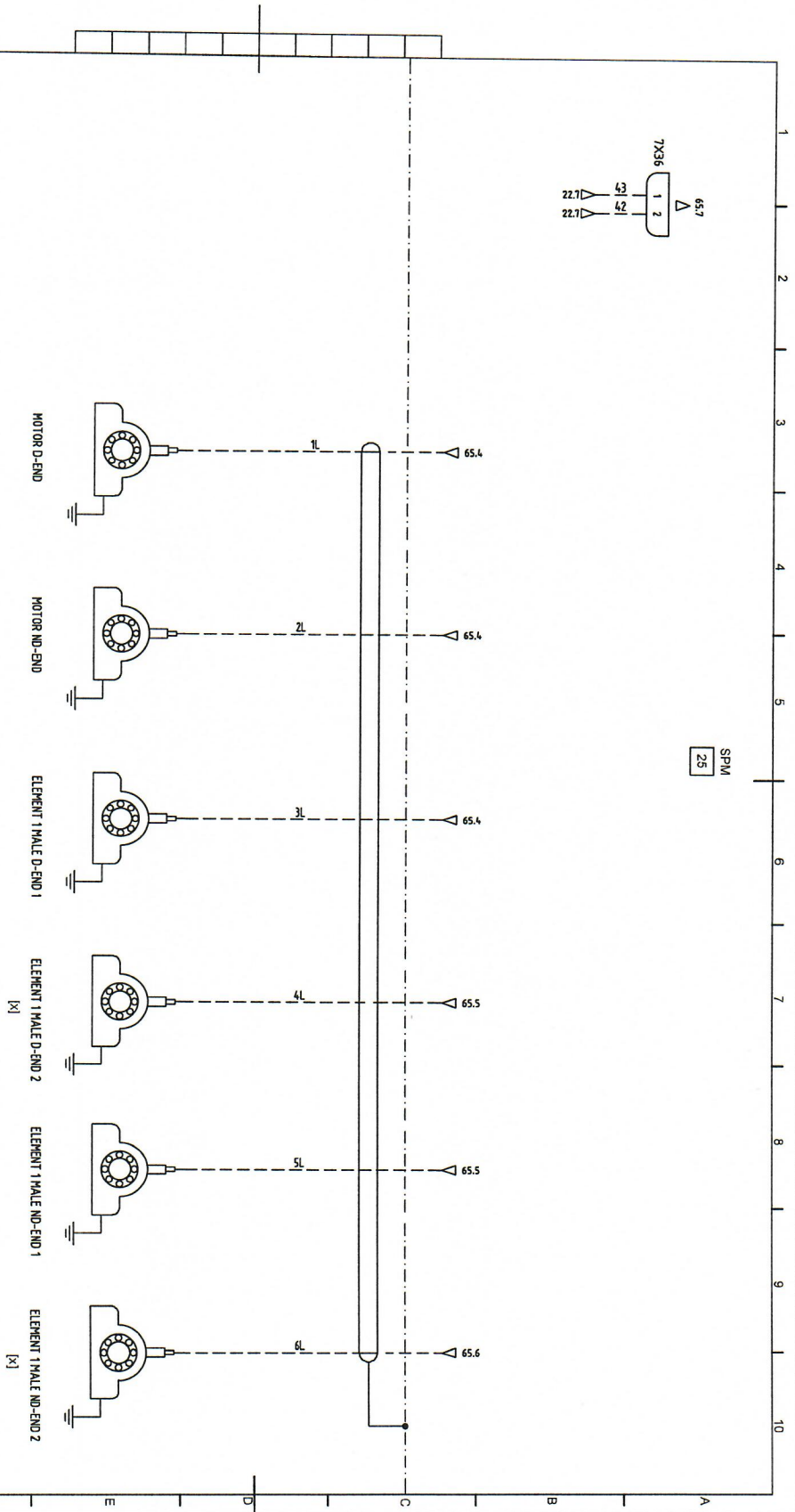
Prev. Page 05
Drawn by AIR15708

Next Page 07
Date 1/29/2016

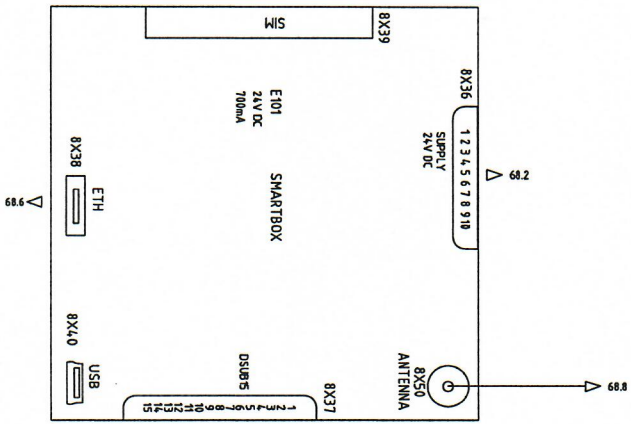
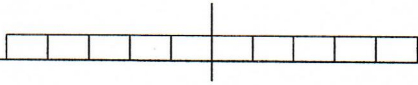
A3

Designation
9823420611-01

Sheet 08 (35)



This document is our property and shall not without our permission be altered, copied, used for manufacturing or communicated to any other person or company.



ACD
Drawing owner
AIF

Name
DIAGRAM SERVICE

GA200-315VSD TT/TT/NT

STATUS
RELEASED

Ed. 12
Date 09/05/2016

Drawn By AIR15708

Next Page 08
Date 1/29/2016

Designation
9823420611-01

Sheet 67 (36)

1 2 3 4 5 6 7 8 9 10

SMARTBOX
67

ANTENNA
8X50

SMARTBOX
E101
24V DC
700mA

8X39
SM

8X38
ETH

8X40
USB

8X37
DSUB25

8X36
1 2 3 4 5 6 7 8 9 10
SUPPLY
24V DC

28.9

68.8

99.6

G

F

E

D

C

B

A

This document is our property and shall not without our permission be altered, copied, used for manufacturing or communicated to any other person or company.



ACD
Drawing owner
AIF

Name

DIAGRAM SERVICE

GA200-315VSD TT/T/N/IT

8/27/16
RELEASED

Ed. 12
Date 9/15/2016

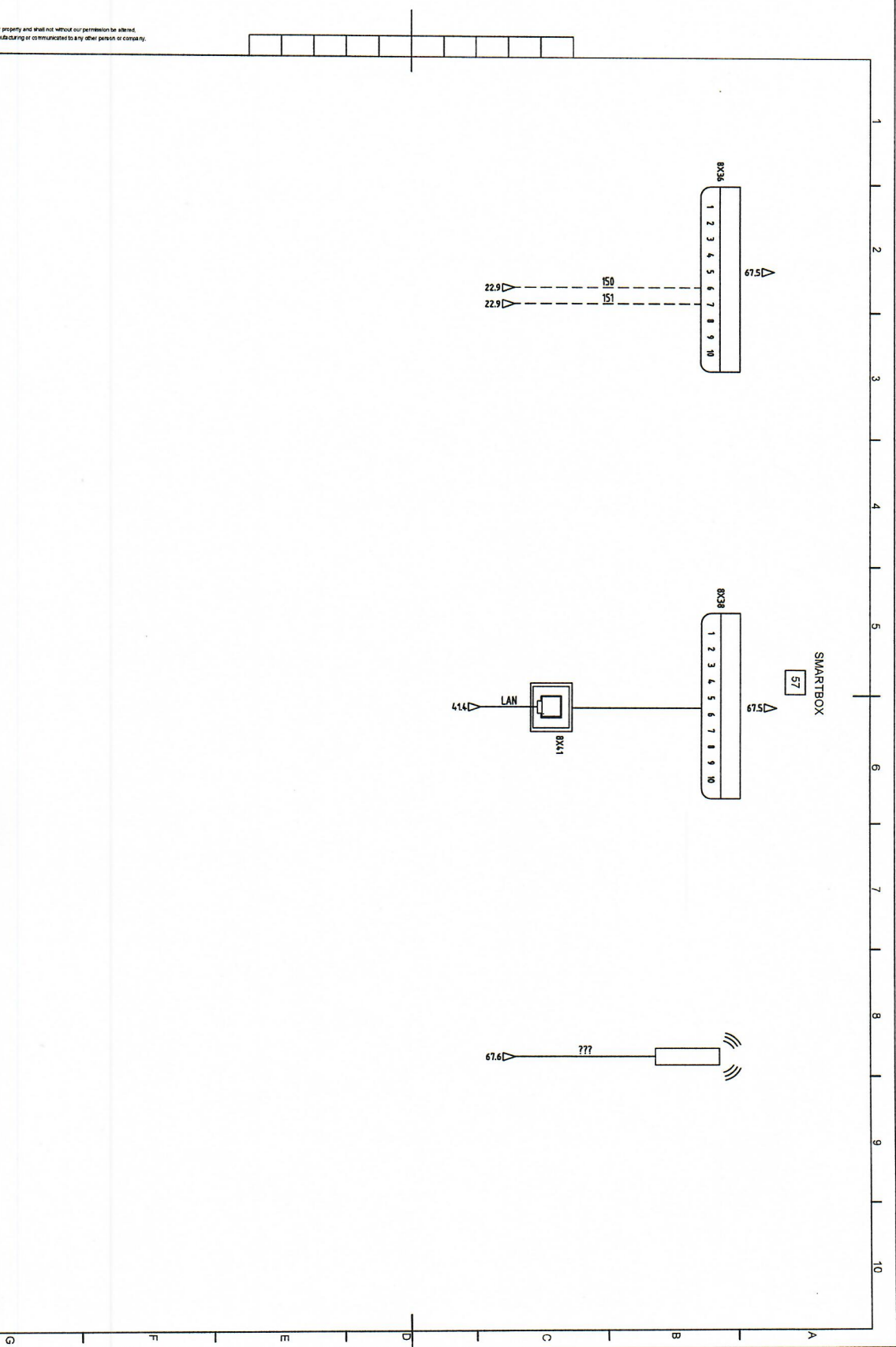
Prep. Page 07
Drawn by AIR15708

Inst. Page 01
Date 1/29/2016

AS
Designation

9823420611-01

Sheet 89 (35)



This document is our property and shall not without our permission be altered, copied, used for manufacturing or communicated to any other person or company.

Agdan Optics
Drawing cover
AIF

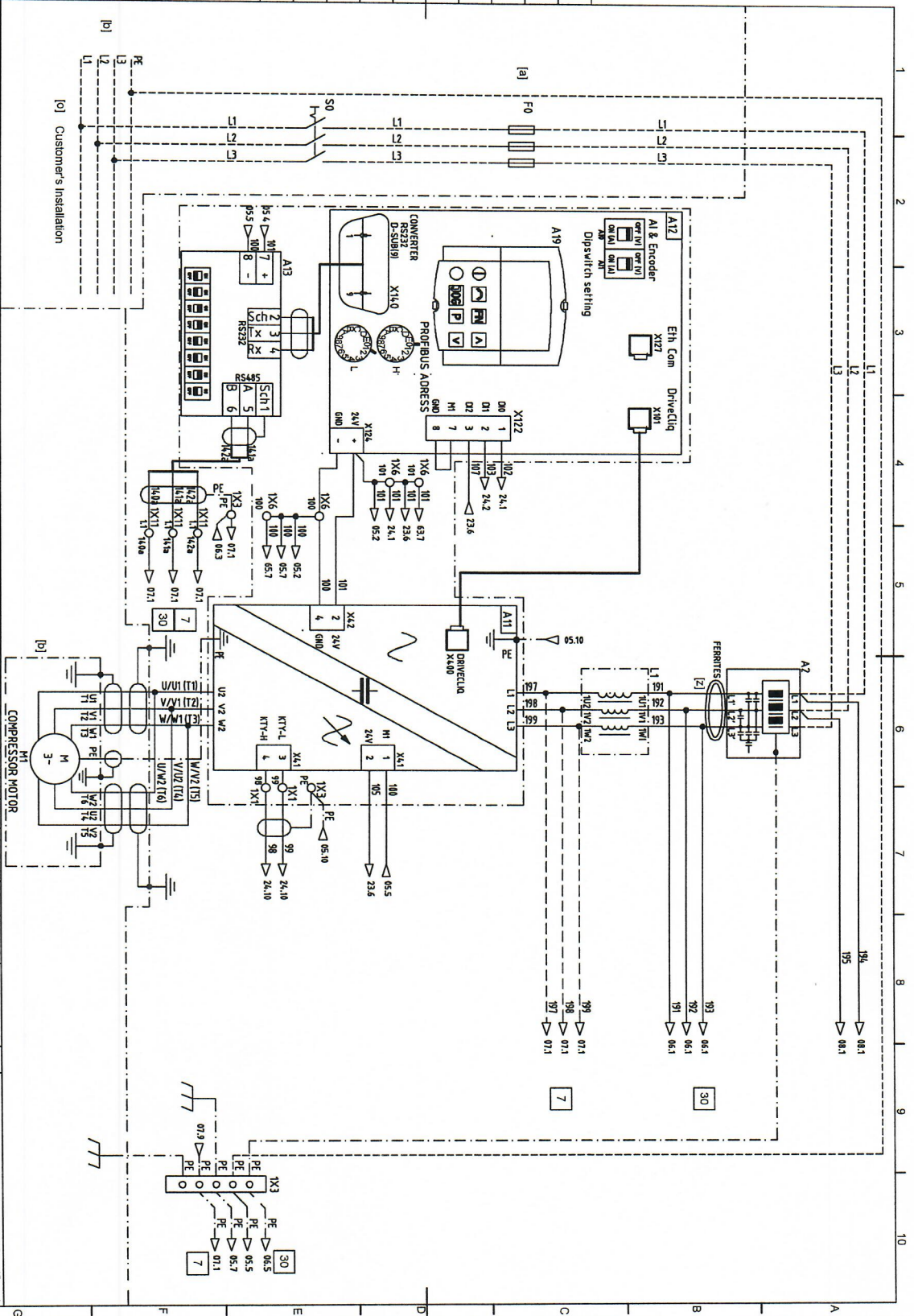
ACD
Name
DIAGRAM SERVICE

GA200-315VSD T1/T/N/IT

START/STOP
REL
Date
12 9/15/2016

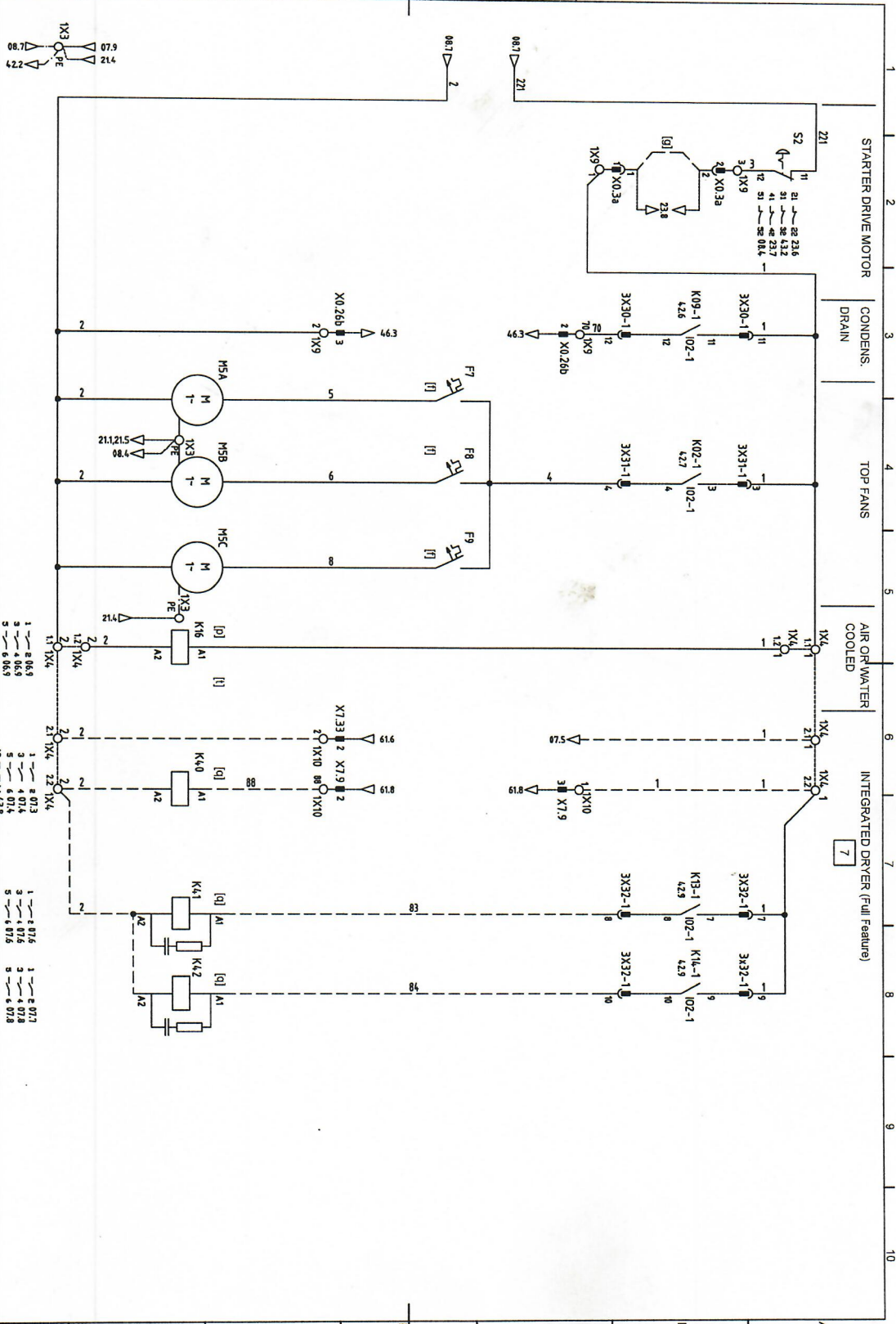
Drawn by
ARI15708

Next Page 08
Date 1/29/2016
Designation
9823420611-01



Sheet 05 (35)

This document is our property and shall not without our permission be altered, copied, used for manufacturing or communicated to any other person or company.



Johnson Controls

ACD
Drawing owner
AIF

Name
DIAGRAM SERVICE

GA200-315VSD T1/TN/T

STATUS
RELEASED

Ed. 12
Date 9/15/2016

Drawn By AIR15708

Next Page 08
Date 1/29/2016

Designation
9823420611-01

Sheet 21 (35)