

Sverepec ZS + MS

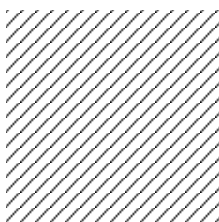
Luminaire list

Φ_{total} 586042 lm	P_{total} 5009.3 W	Luminous efficacy 117.0 lm/W
------------------------------------	--------------------------------	---------------------------------

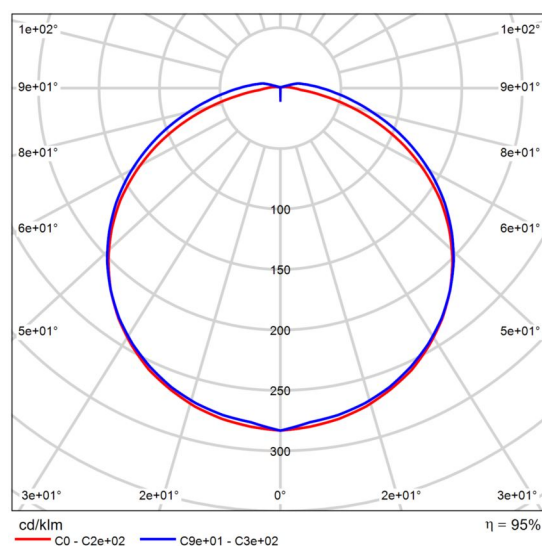
pcs.	Manufacturer	Article No.	Article name	P	Φ	Luminous efficacy
20	BRIGHTSOL	BS01P4K36UN	BS01P4K36UN 35,5W 4K 5227lm line IP65 1200mm	35.5 W	4957 lm	139.6 lm/W
81	BRIGHTSOL	BS02O4K40UNL	BS02O4K40UNL 40W 4K 4760lm line IP40 1200mm	40.0 W	4757 lm	118.9 lm/W
19	BRIGHTSOL	BS02U4K18UN	BS02U4K18UN 20,7W 4K 1700lm IP54 D28	20.7 W	1700 lm	82.1 lm/W
9	BRIGHTSOL	BS04U4K24UNK	BS04U4K24UNK 24W 4K 2250lm IP54 D33	24.0 W	2250 lm	93.7 lm/W
15	BRIGHTSOL	BS06U4K30UNL	BS06U4K30UNL 30W 4K 3270lm line IP40 UGR19 1200mm	30.0 W	3269 lm	109.0 lm/W

Product data sheet

BRIGHTSOL BS01P4K36UN 35,5W 4K 5227lm line IP65 1200mm



Article No.	BS01P4K36UN
P	35.5 W
Φ_{Lamp}	5227 lm
$\Phi_{\text{Luminaire}}$	4957 lm
η	94.84 %
Luminous efficacy	139.6 lm/W
CCT	4000 K
CRI	80



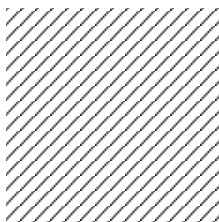
Polar LDC

Glare evaluation according to UGR												
p Ceiling		70	70	50	50	30	70	70	50	50	30	
p Walls		50	30	50	30	30	50	30	50	30	30	
p Floor		20	20	20	20	20	20	20	20	20	20	
Room size X Y		Viewing direction at right angles to lamp axis					Viewing direction parallel to lamp axis					
2H	2H	20.3	21.7	20.7	22.0	22.3	19.6	21.0	20.0	21.3	21.6	
	3H	21.9	23.2	22.3	23.5	23.9	21.2	22.4	21.5	22.7	23.1	
	4H	22.6	23.8	23.0	24.1	24.5	21.8	23.0	22.2	23.3	23.7	
	6H	23.0	24.1	23.4	24.5	24.9	22.3	23.4	22.8	23.8	24.2	
	8H	23.2	24.2	23.6	24.6	25.0	22.6	23.6	23.0	24.0	24.4	
4H	12H	23.2	24.3	23.7	24.7	25.1	22.7	23.8	23.2	24.2	24.6	
	2H	20.9	22.1	21.3	22.4	22.8	20.4	21.5	20.8	21.9	22.3	
	3H	22.7	23.7	23.1	24.1	24.5	22.1	23.1	22.5	23.5	23.9	
	4H	23.5	24.4	23.9	24.8	25.3	22.9	23.8	23.3	24.2	24.7	
	6H	24.0	24.9	24.5	25.3	25.8	23.5	24.3	24.0	24.8	25.3	
8H	8H	24.2	25.0	24.7	25.5	26.0	23.8	24.6	24.3	25.0	25.5	
	12H	24.4	25.1	24.9	25.6	26.1	24.1	24.8	24.6	25.3	25.8	
	4H	23.7	24.5	24.2	25.0	25.5	23.2	24.0	23.7	24.4	24.9	
	6H	24.5	25.1	25.0	25.6	26.2	24.1	24.7	24.6	25.2	25.7	
	8H	24.8	25.4	25.3	25.9	26.4	24.5	25.0	25.0	25.5	26.1	
12H	12H	25.0	25.5	25.6	26.1	26.6	24.8	25.3	25.4	25.9	26.5	
	4H	23.8	24.5	24.3	25.0	25.5	23.2	23.9	23.8	24.4	24.9	
	6H	24.6	25.1	25.1	25.7	26.2	24.2	24.7	24.7	25.2	25.8	
	8H	24.9	25.4	25.5	26.0	26.5	24.6	25.1	25.2	25.6	26.2	
Variation of the observer position for the luminaire distances S												
S = 1.0H		+0.1 / -0.1					+0.1 / -0.1					
S = 1.5H		+0.2 / -0.3					+0.2 / -0.3					
S = 2.0H		+0.4 / -0.5					+0.3 / -0.6					
Standard table		BK06					BK06					
Correction summand		7.6					7.1					
Corrected glare indices referring to 5227lm Total luminous flux												

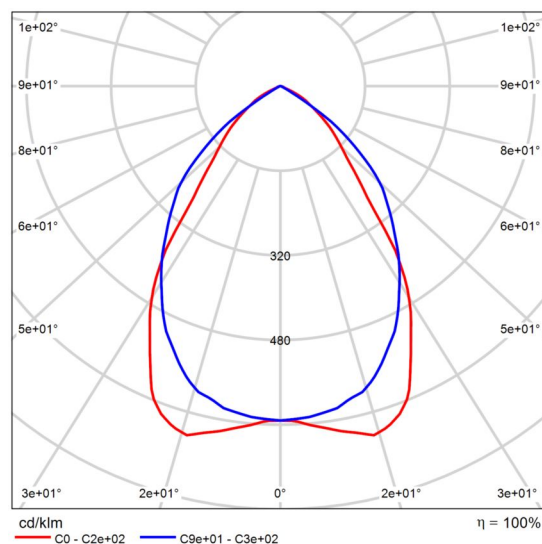
UGR diagram (SHR: 0.25)

Product data sheet

BRIGHTSOL BS02O4K40UNL 40W 4K 4760lm line IP40 1200mm



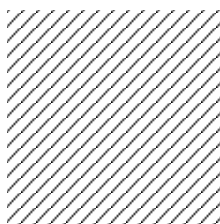
Article No.	BS02O4K40UNL
P	40.0 W
Φ_{Lamp}	4760 lm
$\Phi_{\text{Luminaire}}$	4757 lm
η	99.93 %
Luminous efficacy	118.9 lm/W
CCT	4000 K
CRI	82



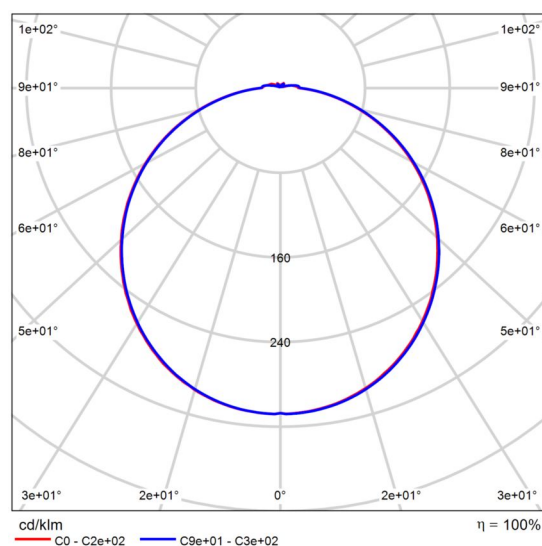
Polar LDC

Product data sheet

BRIGHTSOL BS02U4K18UN 20,7W 4K 1700lm IP54 D28



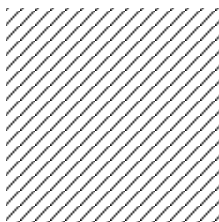
Article No.	BS02U4K18UN
P	20.7 W
Φ_{Lamp}	1700 lm
$\Phi_{\text{Luminaire}}$	1700 lm
η	100.00 %
Luminous efficacy	82.1 lm/W
CCT	4000 K
CRI	80



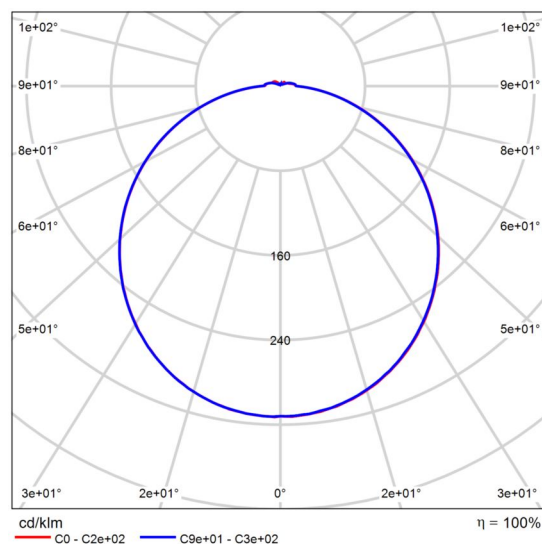
Polar LDC

Product data sheet

BRIGHTSOL BS04U4K24UNK 24W 4K 2250lm IP54 D33



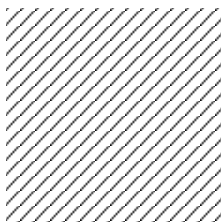
Article No.	BS04U4K24UNK
P	24.0 W
Φ_{Lamp}	2250 lm
$\Phi_{\text{Luminaire}}$	2250 lm
η	100.00 %
Luminous efficacy	93.7 lm/W
CCT	4000 K
CRI	80



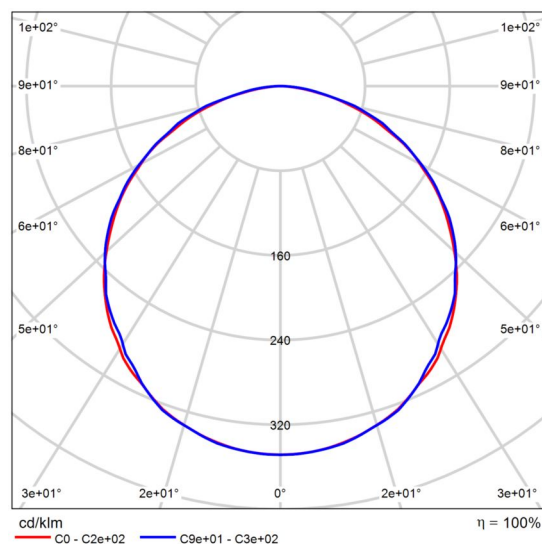
Polar LDC

Product data sheet

BRIGHTSOL BS06U4K30UNL 30W 4K 3270lm line IP40 UGR19 1200mm



Article No.	BS06U4K30UNL
P	30.0 W
Φ_{Lamp}	3270 lm
$\Phi_{\text{Luminaire}}$	3269 lm
η	99.97 %
Luminous efficacy	109.0 lm/W
CCT	4000 K
CRI	85



Polar LDC

Site 1

Luminaire list

Φ_{total} 6800 lm	P_{total} 82.8 W	Luminous efficacy 82.1 lm/W
----------------------------------	------------------------------	--------------------------------

pcs.	Manufacturer	Article No.	Article name	P	Φ	Luminous efficacy
4	BRIGHTSOL	BS02U4K1 8UN	BS02U4K18UN 20,7W 4K 1700lm IP54 D28	20.7 W	1700 lm	82.1 lm/W

Building 1 · 1PP

Luminaire list Φ_{total}

97940 lm

 P_{total}

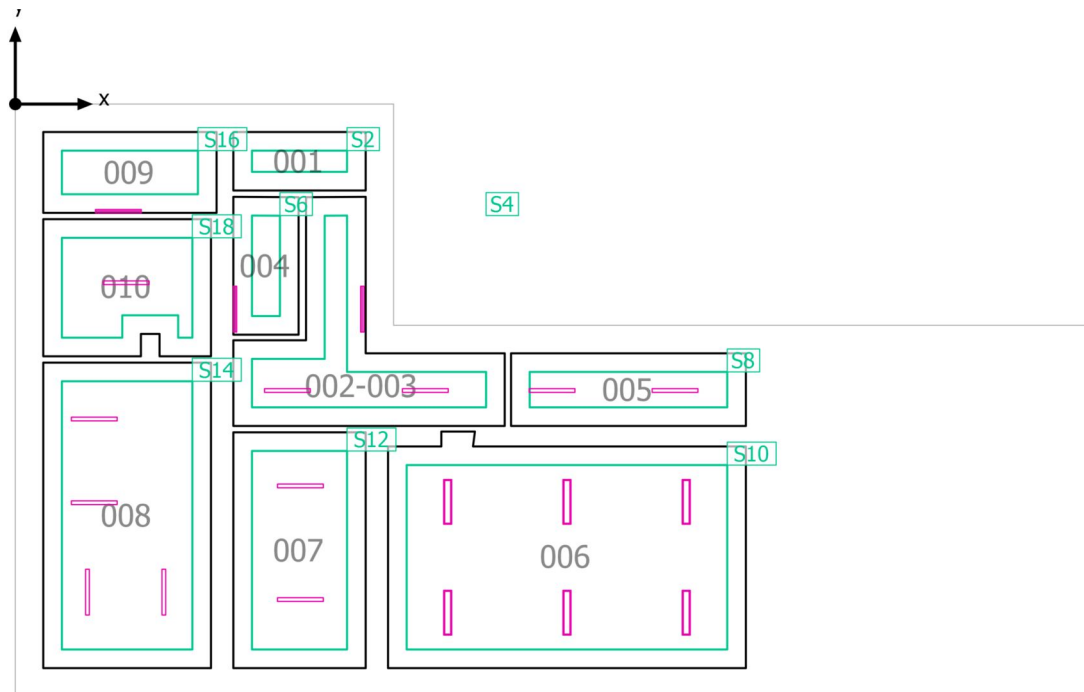
737.0 W

Luminous efficacy

132.9 lm/W

pcs.	Manufacturer	Article No.	Article name	P	Φ	Luminous efficacy
14	BRIGHTSOL	BS01P4K36UN	BS01P4K36UN 35,5W 4K 5227lm line IP65 1200mm	35.5 W	4957 lm	139.6 lm/W
6	BRIGHTSOL	BS02O4K40UNL	BS02O4K40UNL 40W 4K 4760lm line IP40 1200mm	40.0 W	4757 lm	118.9 lm/W

Building 1 · 1PP

Calculation objects

Building 1 · 1PP

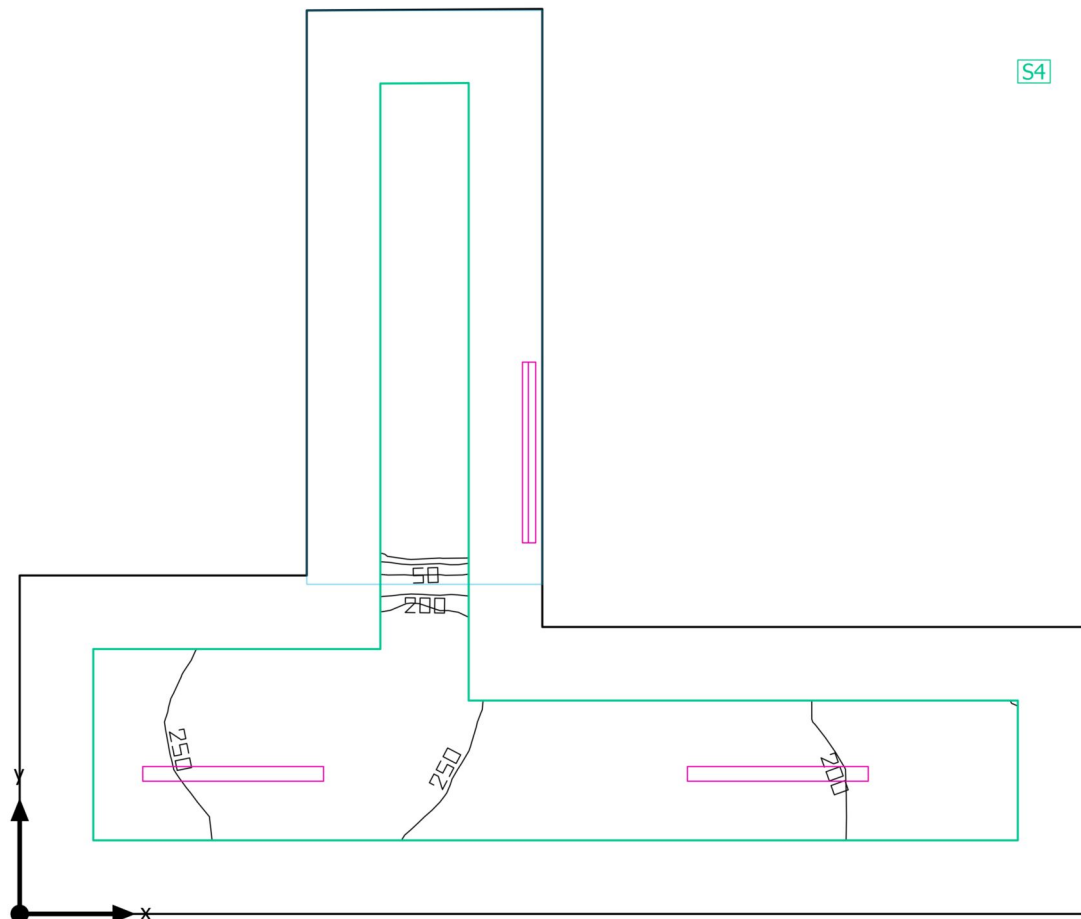
Calculation objects

Work planes

Properties	\bar{E} (Target)	E_{min}	E_{max}	g_1	g_2	Index
Workplane (001) Perpendicular illuminance (adaptive) Height: 0.001 m, Wall zone: 0.500 m	0.00 lx (≥ 500 lx) ✗	0.00 lx	0.00 lx	-	-	S2
Workplane (002-003) Perpendicular illuminance (adaptive) Height: 0.000 m, Wall zone: 0.500 m	182 lx (≥ 100 lx) ✓	0.00 lx	288 lx	0.00	0.00	S4
Workplane (004) Perpendicular illuminance (adaptive) Height: 0.800 m, Wall zone: 0.500 m	349 lx (≥ 100 lx) ✓	86.4 lx	883 lx	0.25	0.098	S6
Workplane (005) Perpendicular illuminance (adaptive) Height: 0.800 m, Wall zone: 0.500 m	287 lx (≥ 100 lx) ✓	213 lx	321 lx	0.74	0.66	S8
Workplane (006) Perpendicular illuminance (adaptive) Height: 1.000 m, Wall zone: 0.500 m	421 lx (≥ 300 lx) ✓	249 lx	558 lx	0.59	0.45	S10
Workplane (007) Perpendicular illuminance (adaptive) Height: 0.800 m, Wall zone: 0.500 m	242 lx (≥ 100 lx) ✓	161 lx	288 lx	0.67	0.56	S12
Workplane (008) Perpendicular illuminance (adaptive) Height: 0.800 m, Wall zone: 0.500 m	317 lx (≥ 200 lx) ✓	130 lx	414 lx	0.41	0.31	S14
Workplane (009) Perpendicular illuminance (adaptive) Height: 0.000 m, Wall zone: 0.500 m	131 lx (≥ 100 lx) ✓	84.0 lx	165 lx	0.64	0.51	S16
Workplane (010) Perpendicular illuminance (adaptive) Height: 0.800 m, Wall zone: 0.500 m	167 lx (≥ 100 lx) ✓	106 lx	223 lx	0.63	0.48	S18

Building 1 · 1PP · 002-003

Summary



Ground area: 21.59 m² | Reflection factors: Ceiling: 70.0 %, Walls: 50.0 %, Floor: 20.0 % | Maintenance factor: 0.79 (fixed) | Clearance height: 3.300 m | Mounting height: 2.000 m - 3.300 m

Building 1 · 1PP · 002-003

Summary

Results

	Symbol	Calculated	Target	Check	Index
Workplane	$\bar{E}_{\text{perpendicular}}$	182 lx	≥ 100 lx	✓	S4
	g_1	0.00	-	-	S4
Consumption values	Consumption	[88 - 120] kWh/a	max. 800 kWh/a	✓	
Lighting power density	Room	4.93 W/m ²	-	-	
		2.70 W/m ² /100 lx	-	-	
	Workplane	11.62 W/m ²	-	-	
		6.37 W/m ² /100 lx	-	-	

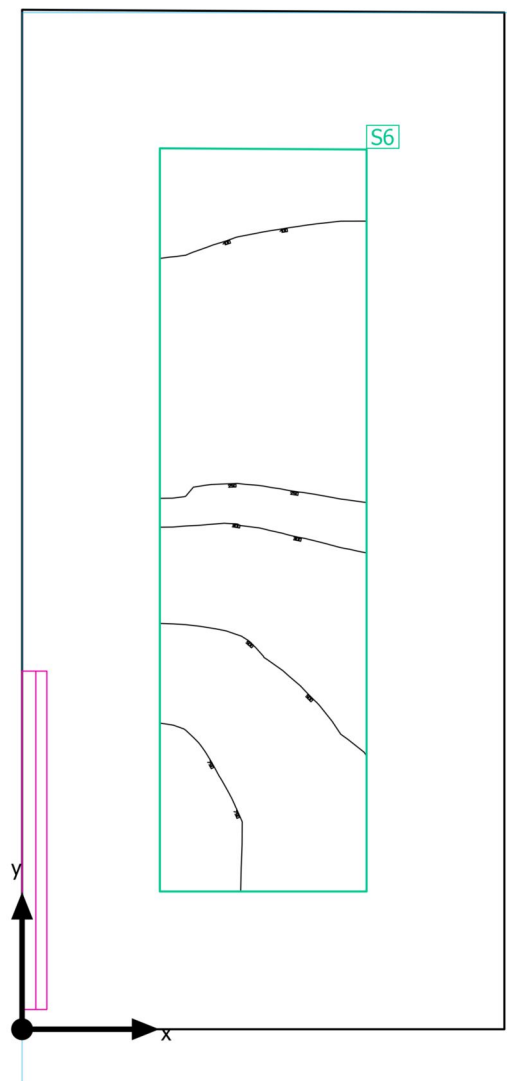
Utilisation profile: Educational premises - Educational buildings, Circulation areas, corridors

Luminaire list

pcs.	Manufacturer	Article No.	Article name	P	Φ	Luminous efficacy
3	BRIGHTSOL	BS01P4K36UN	BS01P4K36UN 35,5W 4K 5227lm line IP65 1200mm	35.5 W	4957 lm	139.6 lm/W

Building 1 · 1PP · 004

Summary



Building 1 · 1PP · 004

Summary

Results

	Symbol	Calculated	Target	Check	Index
Workplane	$\bar{E}_{\text{perpendicular}}$	349 lx	≥ 100 lx	✓	S6
	g_1	0.25	-	-	S6
Consumption values	Consumption	6 kWh/a	max. 250 kWh/a	✓	
Lighting power density	Room	5.49 W/m ²	-	-	
		1.57 W/m ² /100 lx	-	-	
	Workplane	17.56 W/m ²	-	-	
		5.03 W/m ² /100 lx	-	-	

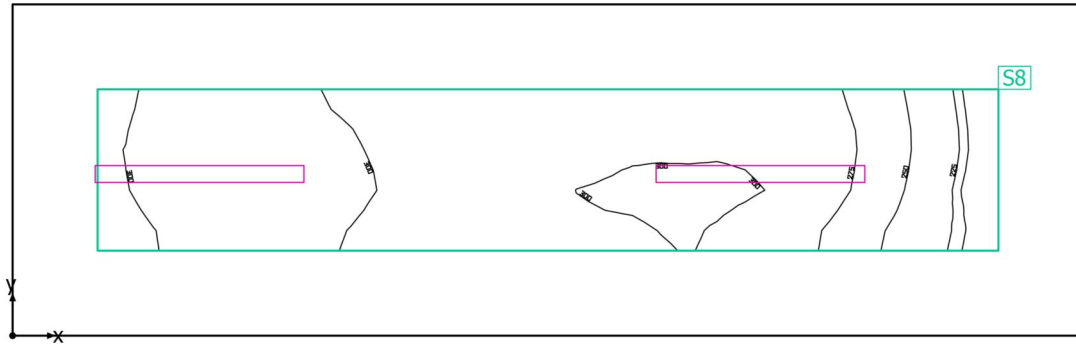
Utilisation profile: General areas inside buildings - Store rooms and cold stores, Store and stockrooms

Luminaire list

pcs.	Manufacturer	Article No.	Article name	P	Φ	Luminous efficacy
1	BRIGHTSOL	BS01P4K36UN	BS01P4K36UN 35,5W 4K 5227lm line IP65 1200mm	35.5 W	4957 lm	139.6 lm/W

Building 1 · 1PP · 005

Summary



Building 1 · 1PP · 005

Summary

Results

	Symbol	Calculated	Target	Check	Index
Workplane	$\bar{E}_{\text{perpendicular}}$	287 lx	≥ 100 lx	✓	S8
	g_1	0.74	-	-	S8
Consumption values	Consumption	[7 - 12] kWh/a	max. 450 kWh/a	✓	
Lighting power density	Room	5.78 W/m ²	-	-	
		2.01 W/m ² /100 lx	-	-	
	Workplane	14.10 W/m ²	-	-	
		4.90 W/m ² /100 lx	-	-	

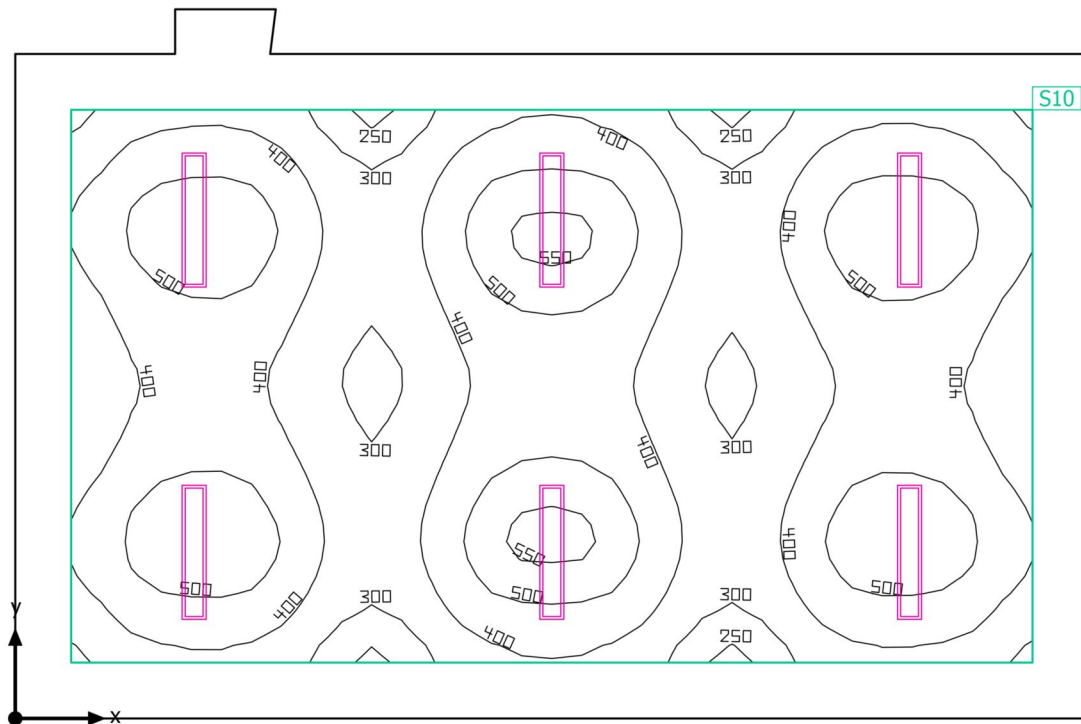
Utilisation profile: General areas inside buildings - Store rooms and cold stores, Store and stockrooms

Luminaire list

pcs.	Manufacturer	Article No.	Article name	P	Φ	Luminous efficacy
2	BRIGHTSOL	BS01P4K36UN	BS01P4K36UN 35,5W 4K 5227lm line IP65 1200mm	35.5 W	4957 lm	139.6 lm/W

Building 1 · 1PP · 006

Summary



Building 1 · 1PP · 006

Summary

Results

	Symbol	Calculated	Target	Check	Index
Workplane	$\bar{E}_{\text{perpendicular}}$	421 lx	≥ 300 lx	✓	S10
	g_1	0.59	-	-	S10
Consumption values	Consumption	[710 - 970] kWh/a	max. 2050 kWh/a	✓	
Lighting power density	Room	4.18 W/m ²	-	-	
		0.99 W/m ² /100 lx	-	-	
	Workplane	5.64 W/m ²	-	-	
		1.34 W/m ² /100 lx	-	-	

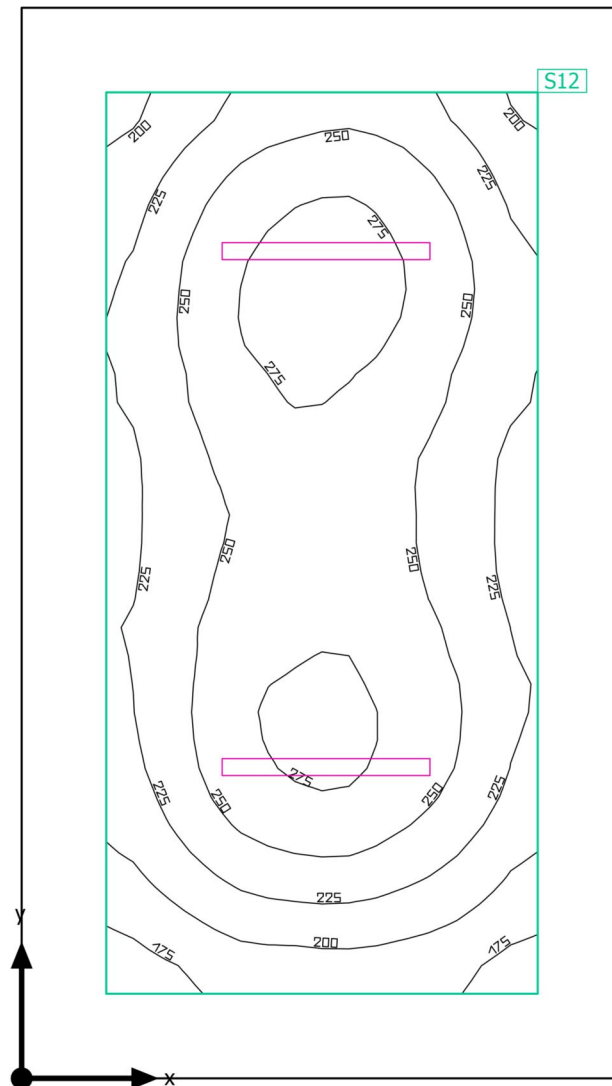
Utilisation profile: Educational premises - Educational buildings, Sports halls, gymnasiums, swimming pools

Luminaire list

pcs.	Manufacturer	Article No.	Article name	P	Φ	Luminous efficacy
6	BRIGHTSOL	BS02O4K4 0UNL	BS02O4K40UNL 40W 4K 4760lm line IP40 1200mm	40.0 W	4757 lm	118.9 lm/W

Building 1 · 1PP · 007

Summary



Building 1 · 1PP · 007

Summary

Results

	Symbol	Calculated	Target	Check	Index
Workplane	$\bar{E}_{\text{perpendicular}}$	242 lx	≥ 100 lx	✓	S12
	g_1	0.67	-	-	S12
Consumption values	Consumption	12 kWh/a	max. 800 kWh/a	✓	
Lighting power density	Room	3.16 W/m ²	-	-	
		1.31 W/m ² /100 lx	-	-	
	Workplane	5.23 W/m ²	-	-	
		2.16 W/m ² /100 lx	-	-	

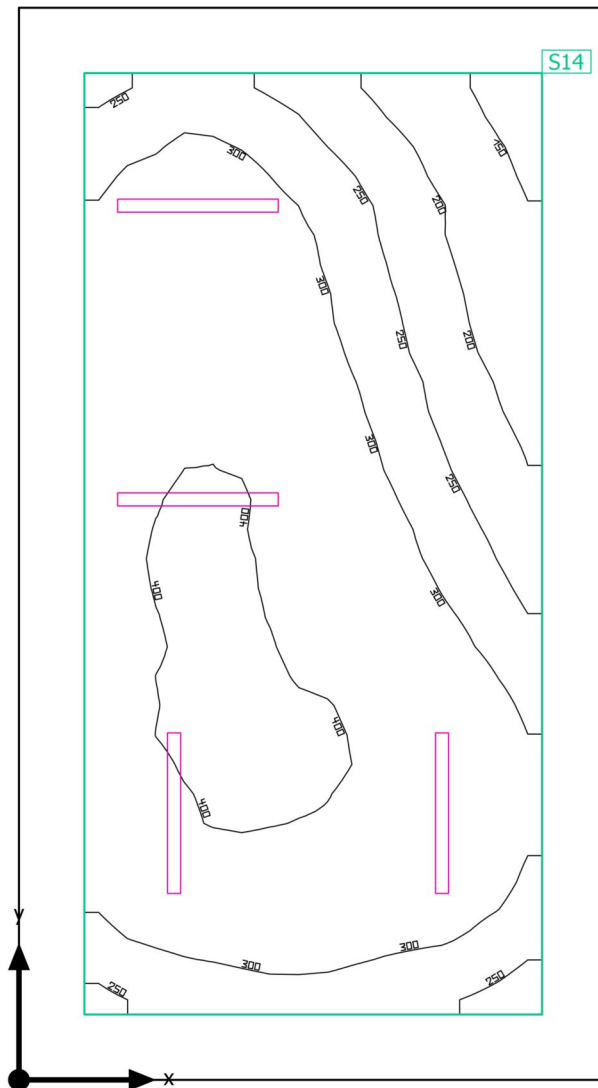
Utilisation profile: General areas inside buildings - Store rooms and cold stores, Store and stockrooms

Luminaire list

pcs.	Manufacturer	Article No.	Article name	P	Φ	Luminous efficacy
2	BRIGHTSOL	BS01P4K36UN	BS01P4K36UN 35,5W 4K 5227lm line IP65 1200mm	35.5 W	4957 lm	139.6 lm/W

Building 1 · 1PP · 008

Summary



Building 1 · 1PP · 008

Summary

Results

	Symbol	Calculated	Target	Check	Index
Workplane	$\bar{E}_{\text{perpendicular}}$	317 lx	≥ 200 lx	✓	S14
	g_1	0.41	-	-	S14
Consumption values	Consumption	[190 - 320] kWh/a	max. 1300 kWh/a	✓	
Lighting power density	Room	3.85 W/m ²	-	-	
		1.22 W/m ² /100 lx	-	-	
	Workplane	5.63 W/m ²	-	-	
		1.78 W/m ² /100 lx	-	-	

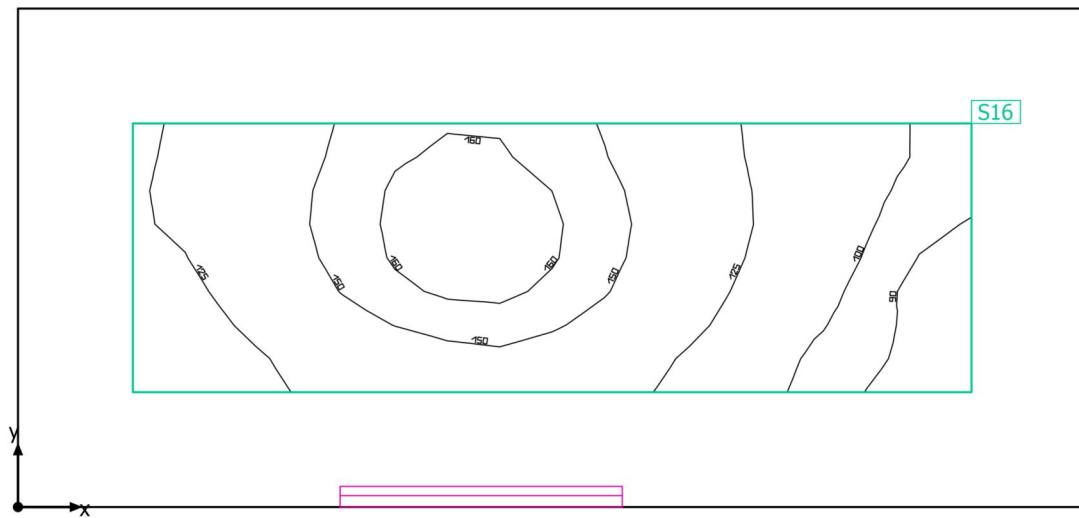
Utilisation profile: Industrial activities and crafts - Power stations, Side rooms, e.g. pump rooms, condenser rooms, switchboards

Luminaire list

pcs.	Manufacturer	Article No.	Article name	P	Φ	Luminous efficacy
4	BRIGHTSOL	BS01P4K36UN	BS01P4K36UN 35,5W 4K 5227lm line IP65 1200mm	35.5 W	4957 lm	139.6 lm/W

Building 1 · 1PP · 009

Summary



Building 1 · 1PP · 009

Summary

Results

	Symbol	Calculated	Target	Check	Index
Workplane	$\bar{E}_{\text{perpendicular}}$	131 lx	≥ 100 lx	✓	S16
	g_1	0.64	-	-	S16
Consumption values	Consumption	[25 - 39] kWh/a	max. 400 kWh/a	✓	
Lighting power density	Room	3.52 W/m ²	-	-	
		2.68 W/m ² /100 lx	-	-	
	Workplane	8.31 W/m ²	-	-	
		6.33 W/m ² /100 lx	-	-	

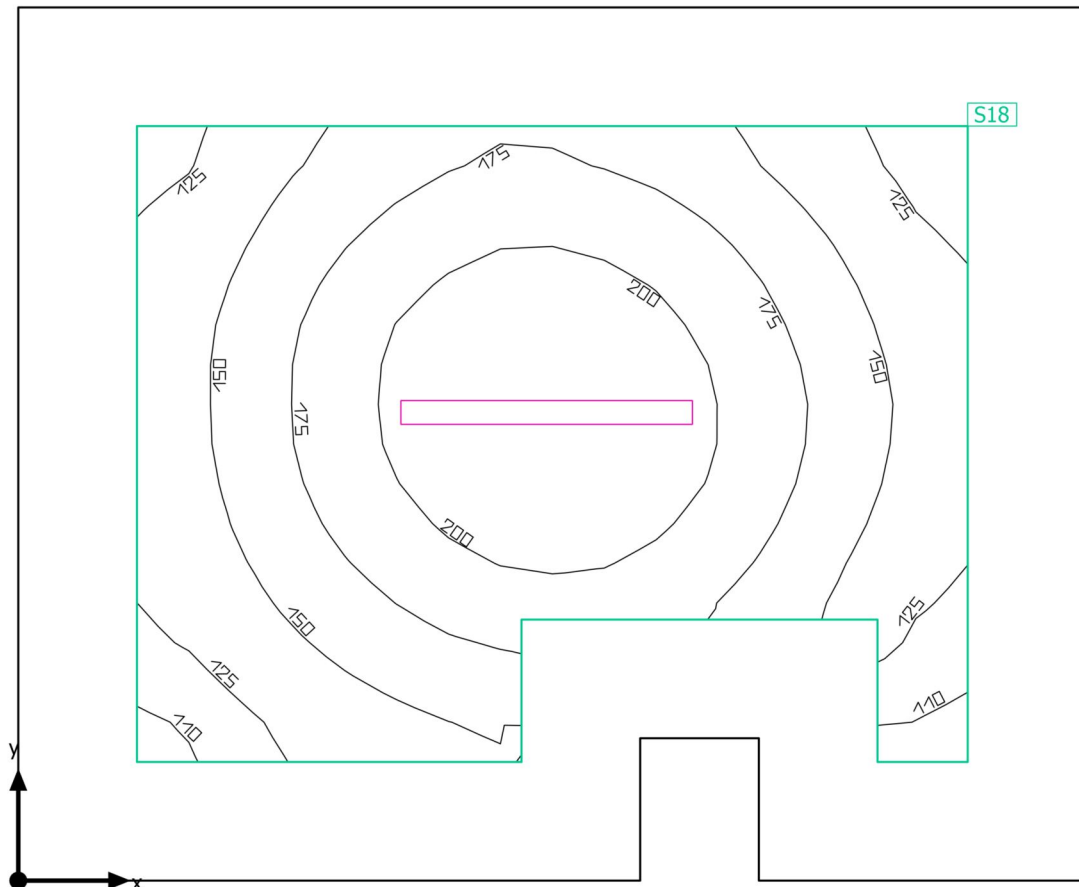
Utilisation profile: Educational premises - Educational buildings, Circulation areas, corridors

Luminaire list

pcs.	Manufacturer	Article No.	Article name	P	Φ	Luminous efficacy
1	BRIGHTSOL	BS01P4K36UN	BS01P4K36UN 35,5W 4K 5227lm line IP65 1200mm	35.5 W	4957 lm	139.6 lm/W

Building 1 · 1PP · 010

Summary



Building 1 · 1PP · 010

Summary

Results

	Symbol	Calculated	Target	Check	Index
Workplane	$\bar{E}_{\text{perpendicular}}$	167 lx	≥ 100 lx	✓	S18
	g_1	0.63	-	-	S18
Consumption values	Consumption	[4 - 6] kWh/a	max. 600 kWh/a	✓	
Lighting power density	Room	2.18 W/m ²	-	-	
		1.31 W/m ² /100 lx	-	-	
	Workplane	4.19 W/m ²	-	-	
		2.51 W/m ² /100 lx	-	-	

Utilisation profile: General areas inside buildings - Store rooms and cold stores, Store and stockrooms

Luminaire list

pcs.	Manufacturer	Article No.	Article name	P	Φ	Luminous efficacy
1	BRIGHTSOL	BS01P4K36UN	BS01P4K36UN 35,5W 4K 5227lm line IP65 1200mm	35.5 W	4957 lm	139.6 lm/W

Building 1 · 1NP

Luminaire list Φ_{total}

158334 lm

 P_{total}

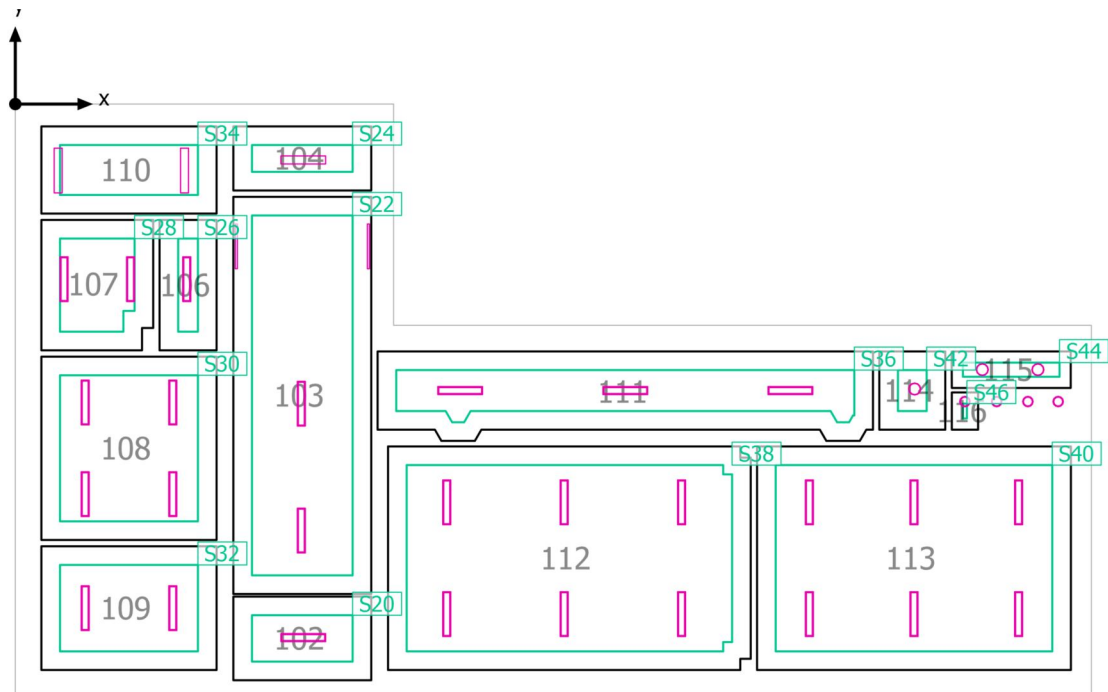
1384.8 W

Luminous efficacy

114.3 lm/W

pcs.	Manufacturer	Article No.	Article name	P	Φ	Luminous efficacy
27	BRIGHTSOL	BS02O4K40UNL	BS02O4K40UNL 40W 4K 4760lm line IP40 1200mm	40.0 W	4757 lm	118.9 lm/W
4	BRIGHTSOL	BS02U4K18UN	BS02U4K18UN 20,7W 4K 1700lm IP54 D28	20.7 W	1700 lm	82.1 lm/W
3	BRIGHTSOL	BS04U4K24UNK	BS04U4K24UNK 24W 4K 2250lm IP54 D33	24.0 W	2250 lm	93.7 lm/W
5	BRIGHTSOL	BS06U4K30UNL	BS06U4K30UNL 30W 4K 3270lm line IP40 UGR19 1200mm	30.0 W	3269 lm	109.0 lm/W

Building 1 · 1NP

Calculation objects

Building 1 · 1NP

Calculation objects

Work planes

Properties	\bar{E} (Target)	E_{min}	E_{max}	g_1	g_2	Index
Workplane (102) Perpendicular illuminance (adaptive) Height: 0.800 m, Wall zone: 0.500 m	399 lx (≥ 100 lx) ✓	295 lx	471 lx	0.74	0.63	S20
Workplane (103) Perpendicular illuminance (adaptive) Height: 0.000 m, Wall zone: 0.500 m	248 lx (≥ 100 lx) ✓	133 lx	327 lx	0.54	0.41	S22
Workplane (104) Perpendicular illuminance (adaptive) Height: 0.800 m, Wall zone: 0.500 m	174 lx (≥ 100 lx) ✓	142 lx	196 lx	0.82	0.72	S24
Workplane (106) Perpendicular illuminance (adaptive) Height: 0.800 m, Wall zone: 0.500 m	417 lx (≥ 200 lx) ✓	309 lx	479 lx	0.74	0.65	S26
Workplane (107) Perpendicular illuminance (adaptive) Height: 0.850 m, Wall zone: 0.500 m	565 lx (≥ 500 lx) ✓	361 lx	740 lx	0.64	0.49	S28
Workplane (108) Perpendicular illuminance (adaptive) Height: 0.850 m, Wall zone: 0.500 m	588 lx (≥ 500 lx) ✓	452 lx	669 lx	0.77	0.68	S30
Workplane (109) Perpendicular illuminance (adaptive) Height: 0.800 m, Wall zone: 0.500 m	430 lx (≥ 300 lx) ✓	312 lx	541 lx	0.73	0.58	S32
Workplane (110) Perpendicular illuminance (adaptive) Height: 0.000 m, Wall zone: 0.500 m	167 lx (≥ 150 lx) ✓	154 lx	181 lx	0.92	0.85	S34
Workplane (111) Perpendicular illuminance (adaptive) Height: 0.000 m, Wall zone: 0.500 m	242 lx (≥ 200 lx) ✓	176 lx	286 lx	0.73	0.62	S36
Workplane (112) Perpendicular illuminance (adaptive) Height: 0.850 m, Wall zone: 0.500 m	405 lx (≥ 300 lx) ✓	263 lx	514 lx	0.65	0.51	S38
Workplane (113) Perpendicular illuminance (adaptive) Height: 0.850 m, Wall zone: 0.500 m	463 lx (≥ 300 lx) ✓	316 lx	562 lx	0.68	0.56	S40

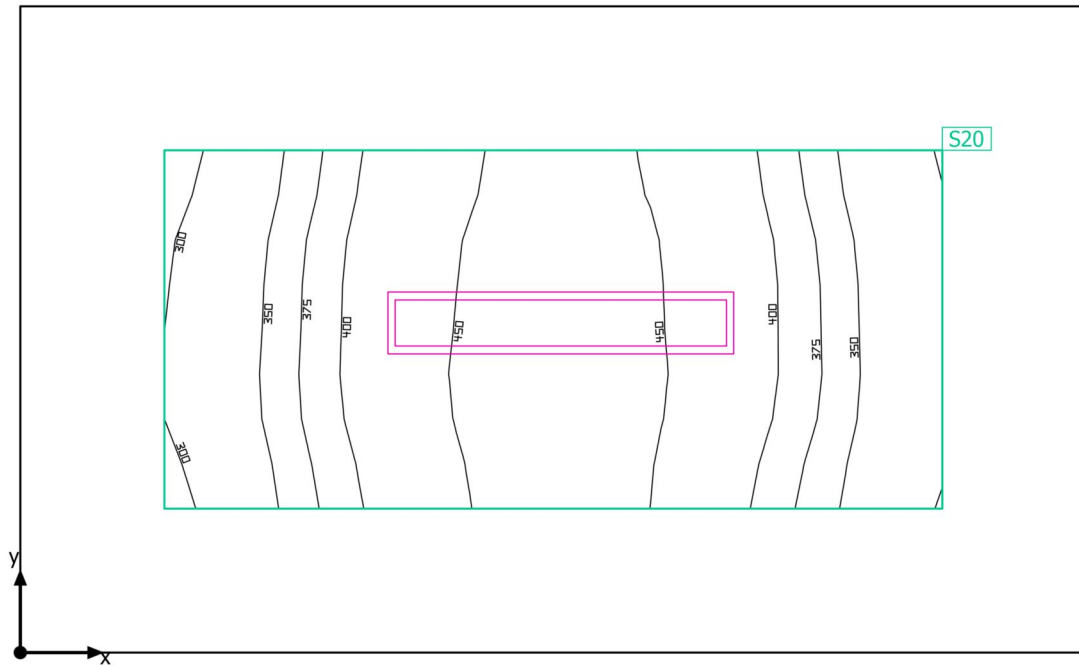
Building 1 · 1NP

Calculation objects

Workplane (114) Perpendicular illuminance (adaptive) Height: 0.800 m, Wall zone: 0.500 m	208 lx (≥ 200 lx) ✓	197 lx	214 lx	0.95	0.92	S42
Workplane (115) Perpendicular illuminance (adaptive) Height: 0.850 m, Wall zone: 0.300 m	507 lx (≥ 200 lx) ✓	430 lx	552 lx	0.85	0.78	S44
Workplane (116) Perpendicular illuminance (adaptive) Height: 0.850 m, Wall zone: 0.300 m	449 lx (≥ 200 lx) ✓	447 lx	452 lx	1.00	0.99	S46

Building 1 · 1NP · 102

Summary



Building 1 · 1NP · 102

Summary

Results

	Symbol	Calculated	Target	Check	Index
Workplane	$\bar{E}_{\text{perpendicular}}$	399 lx	≥ 100 lx	✓	S20
	g_1	0.74	-	-	S20
Consumption values	Consumption	[49 - 77] kWh/a	max. 300 kWh/a	✓	
Lighting power density	Room	4.82 W/m ²	-	-	
		1.21 W/m ² /100 lx	-	-	
	Workplane	11.90 W/m ²	-	-	
		2.98 W/m ² /100 lx	-	-	

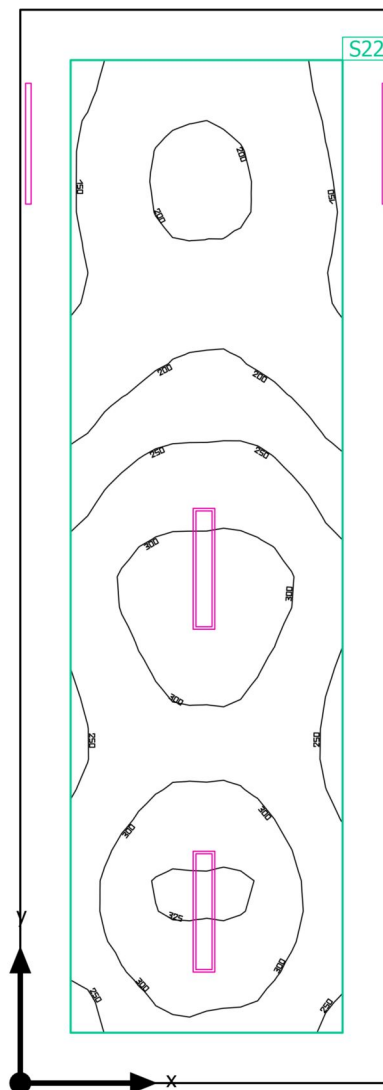
Utilisation profile: Places of public assembly - General areas, Entrance halls

Luminaire list

pcs.	Manufacturer	Article No.	Article name	P	Φ	Luminous efficacy
1	BRIGHTSOL	BS02O4K4 0UNL	BS02O4K40UNL 40W 4K 4760lm line IP40 1200mm	40.0 W	4757 lm	118.9 lm/W

Building 1 · 1NP · 103

Summary



Building 1 · 1NP · 103

Summary

Results

	Symbol	Calculated	Target	Check	Index
Workplane	$\bar{E}_{\text{perpendicular}}$	248 lx	≥ 100 lx	✓	S22
	g_1	0.54	-	-	S22
Consumption values	Consumption	150 kWh/a	max. 1400 kWh/a	✓	
Lighting power density	Room	3.55 W/m ²	-	-	
		1.43 W/m ² /100 lx	-	-	
	Workplane	5.37 W/m ²	-	-	
		2.17 W/m ² /100 lx	-	-	

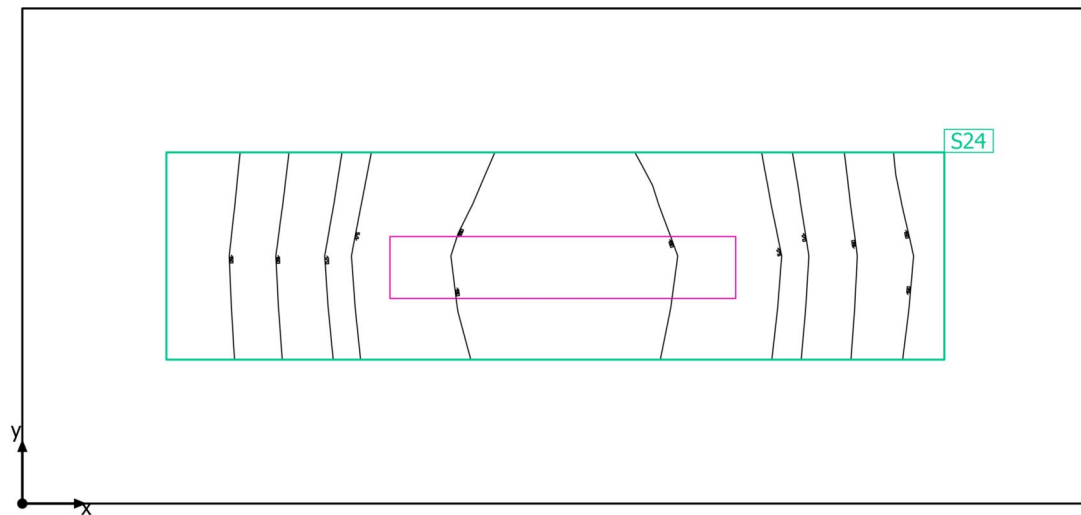
Utilisation profile: Educational premises - Educational buildings, Circulation areas, corridors

Luminaire list

pcs.	Manufacturer	Article No.	Article name	P	Φ	Luminous efficacy
2	BRIGHTSOL	BS02O4K40UNL	BS02O4K40UNL 40W 4K 4760lm line IP40 1200mm	40.0 W	4757 lm	118.9 lm/W
2	BRIGHTSOL	BS06U4K30UNL	BS06U4K30UNL 30W 4K 3270lm line IP40 UGR19 1200mm	30.0 W	3269 lm	109.0 lm/W

Building 1 · 1NP · 104

Summary



Building 1 · 1NP · 104

Summary

Results

	Symbol	Calculated	Target	Check	Index
Workplane	$\bar{E}_{\text{perpendicular}}$	174 lx	≥ 100 lx	✓	S24
	g_1	0.82	-	-	S24
Consumption values	Consumption	[36 - 58] kWh/a	max. 250 kWh/a	✓	
Lighting power density	Room	4.71 W/m ²	-	-	
		2.71 W/m ² /100 lx	-	-	
	Workplane	15.43 W/m ²	-	-	
		8.87 W/m ² /100 lx	-	-	

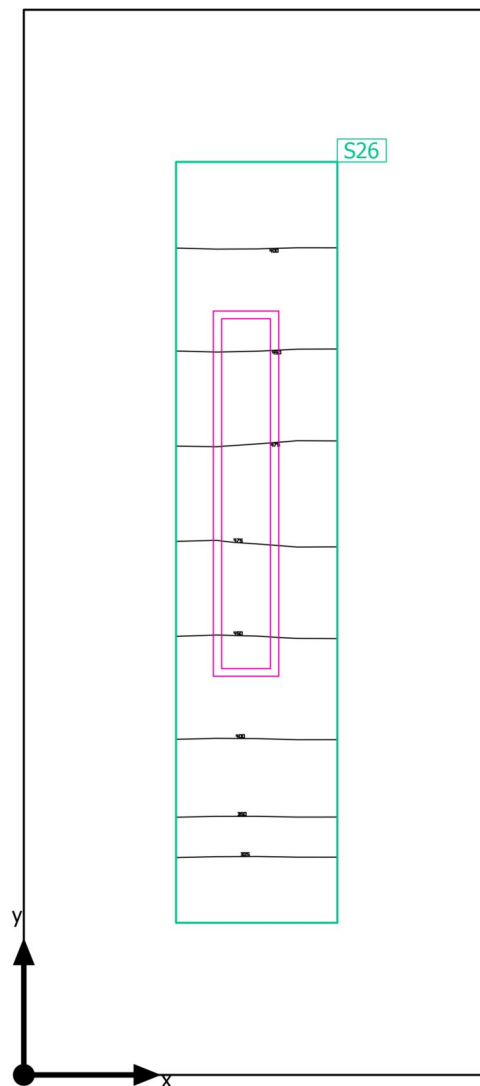
Utilisation profile: Places of public assembly - General areas, Entrance halls

Luminaire list

pcs.	Manufacturer	Article No.	Article name	P	Φ	Luminous efficacy
1	BRIGHTSOL	BS06U4K30UNL	BS06U4K30UNL 30W 4K 3270lm line IP40 UGR19 1200mm	30.0 W	3269 lm	109.0 lm/W

Building 1 · 1NP · 106

Summary



Building 1 · 1NP · 106

Summary

Results

	Symbol	Calculated	Target	Check	Index
Workplane	$\bar{E}_{\text{perpendicular}}$	417 lx	≥ 200 lx	✓	S26
	g_1	0.74	-	-	S26
Consumption values	Consumption	77 kWh/a	max. 200 kWh/a	✓	
Lighting power density	Room	7.47 W/m ²	-	-	
		1.79 W/m ² /100 lx	-	-	
	Workplane	30.19 W/m ²	-	-	
		7.23 W/m ² /100 lx	-	-	

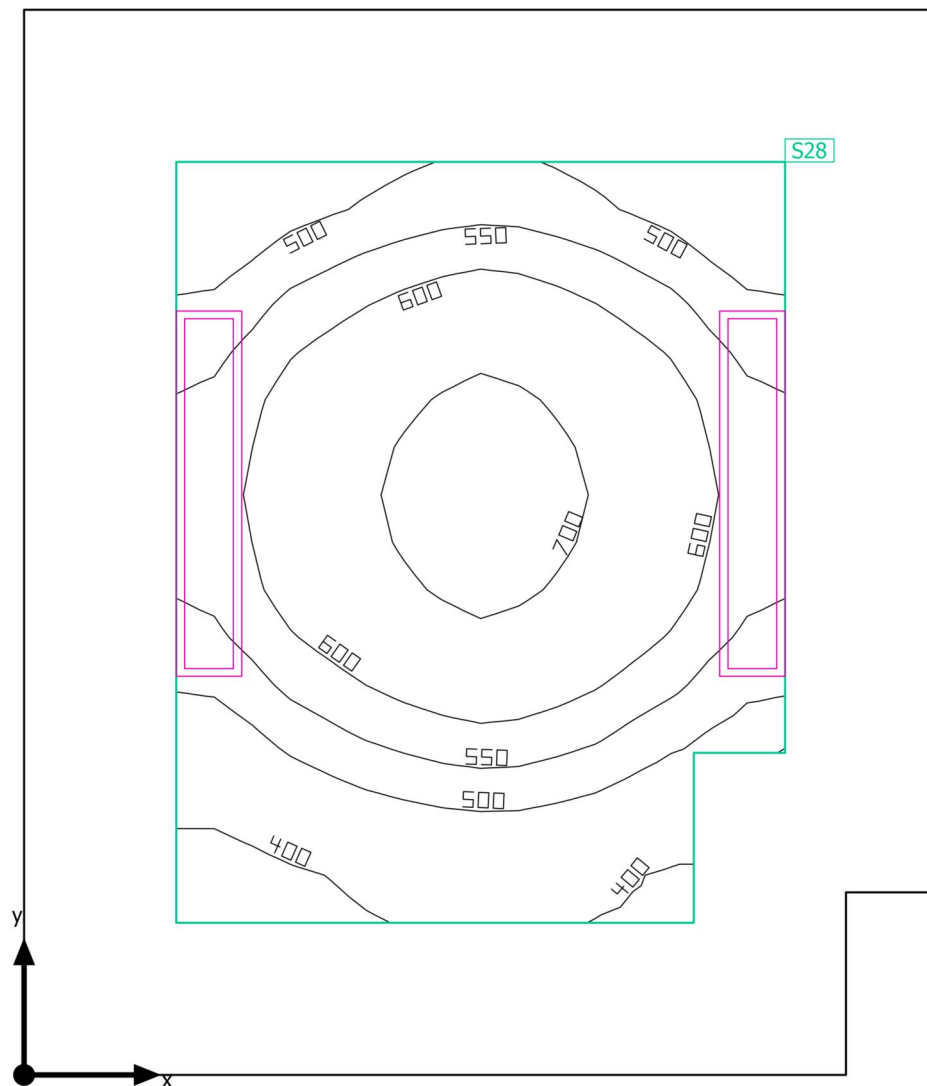
Utilisation profile: Places of public assembly - General areas, Entrance halls

Luminaire list

pcs.	Manufacturer	Article No.	Article name	P	Φ	Luminous efficacy
1	BRIGHTSOL	BS02O4K4 0UNL	BS02O4K40UNL 40W 4K 4760lm line IP40 1200mm	40.0 W	4757 lm	118.9 lm/W

Building 1 · 1NP · 107

Summary



Building 1 · 1NP · 107

Summary

Results

	Symbol	Calculated	Target	Check	Index
Workplane	$\bar{E}_{\text{perpendicular}}$	565 lx	≥ 500 lx	✓	S28
	g_1	0.64	-	-	S28
Consumption values	Consumption	[140 - 220] kWh/a	max. 400 kWh/a	✓	
Lighting power density	Room	7.75 W/m ²	-	-	
		1.37 W/m ² /100 lx	-	-	
	Workplane	16.55 W/m ²	-	-	
		2.93 W/m ² /100 lx	-	-	

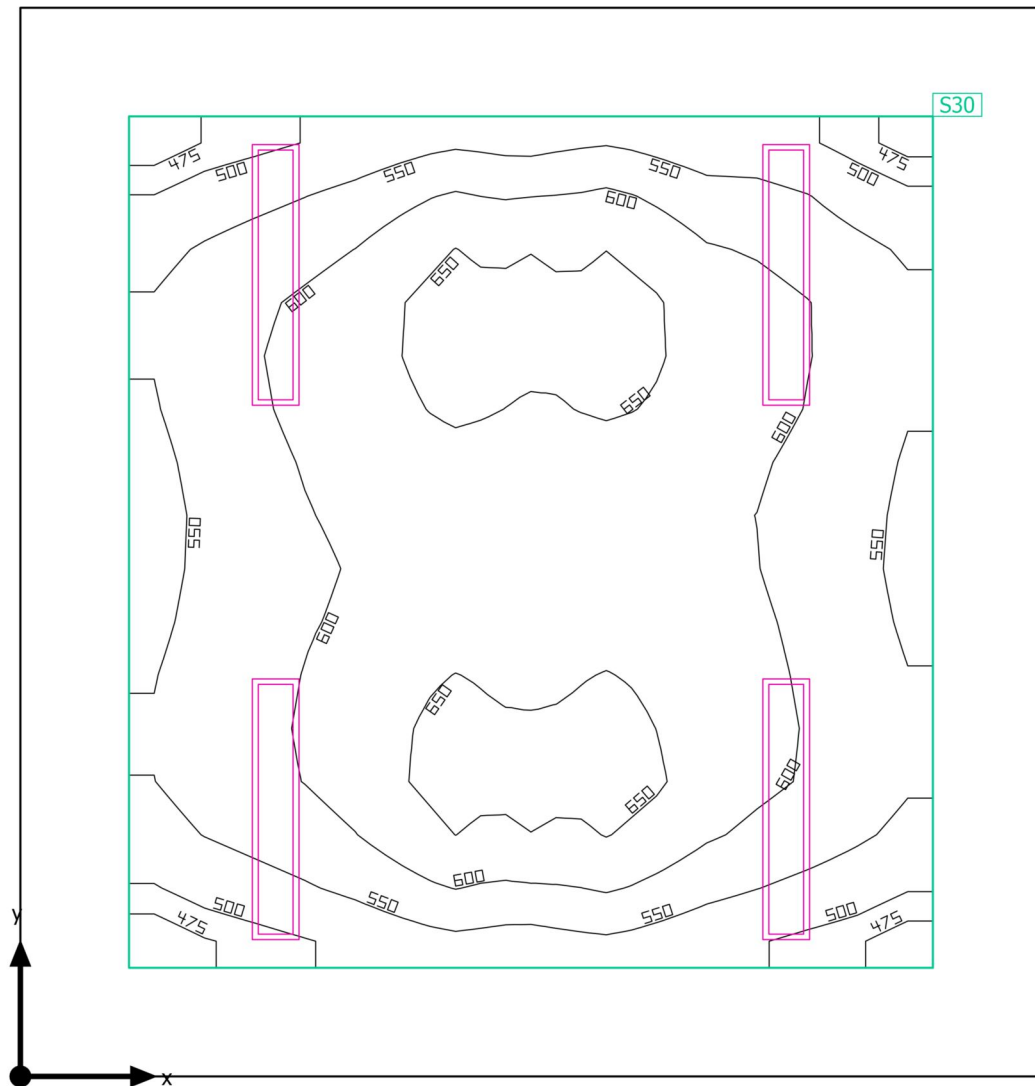
Utilisation profile: DIALux presetting, Standard (office)

Luminaire list

pcs.	Manufacturer	Article No.	Article name	P	Φ	Luminous efficacy
2	BRIGHTSOL	BS02O4K4 0UNL	BS02O4K40UNL 40W 4K 4760lm line IP40 1200mm	40.0 W	4757 lm	118.9 lm/W

Building 1 · 1NP · 108

Summary



Building 1 · 1NP · 108

Summary

Results

	Symbol	Calculated	Target	Check	Index
Workplane	$\bar{E}_{\text{perpendicular}}$	588 lx	≥ 500 lx	✓	S30
	g_1	0.77	-	-	S30
Consumption values	Consumption	[280 - 440] kWh/a	max. 850 kWh/a	✓	
Lighting power density	Room	6.92 W/m ²	-	-	
		1.18 W/m ² /100 lx	-	-	
	Workplane	11.03 W/m ²	-	-	
		1.88 W/m ² /100 lx	-	-	

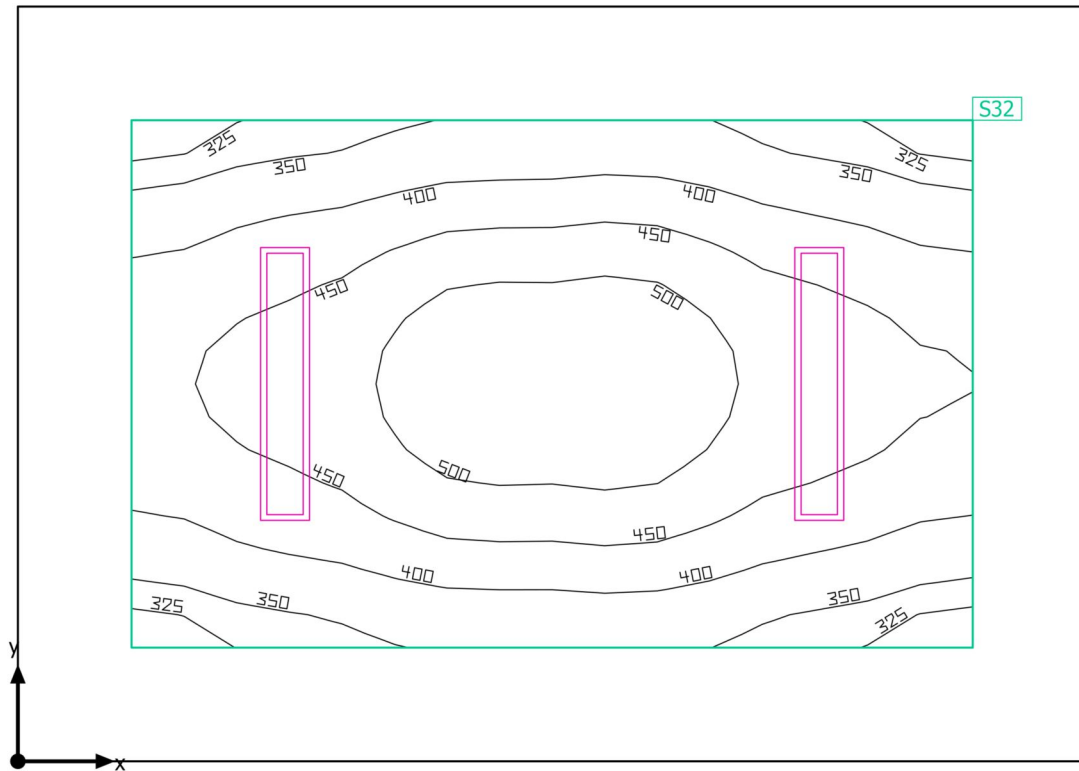
Utilisation profile: DIALux presetting, Standard (office)

Luminaire list

pcs.	Manufacturer	Article No.	Article name	P	Φ	Luminous efficacy
4	BRIGHTSOL	BS02O4K4 0UNL	BS02O4K40UNL 40W 4K 4760lm line IP40 1200mm	40.0 W	4757 lm	118.9 lm/W

Building 1 · 1NP · 109

Summary



Building 1 · 1NP · 109

Summary

Results

	Symbol	Calculated	Target	Check	Index
Workplane	$\bar{E}_{\text{perpendicular}}$	430 lx	≥ 300 lx	✓	S32
	g_1	0.73	-	-	S32
Consumption values	Consumption	[97 - 150] kWh/a	max. 550 kWh/a	✓	
Lighting power density	Room	5.13 W/m ²	-	-	
		1.19 W/m ² /100 lx	-	-	
	Workplane	9.32 W/m ²	-	-	
		2.17 W/m ² /100 lx	-	-	

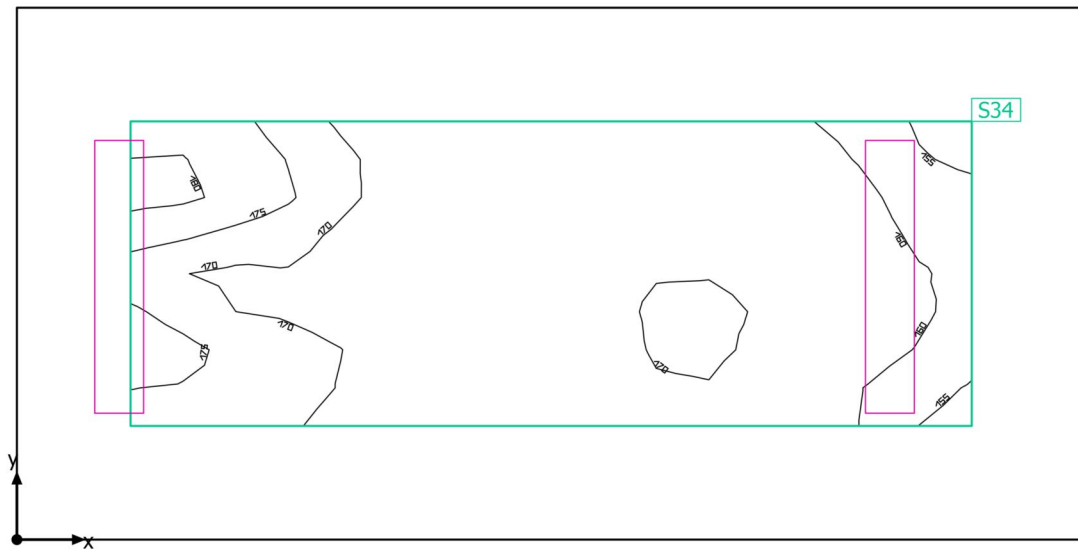
Utilisation profile: Educational premises - Educational buildings, Classroom

Luminaire list

pcs.	Manufacturer	Article No.	Article name	P	Φ	Luminous efficacy
2	BRIGHTSOL	BS02O4K4 0UNL	BS02O4K40UNL 40W 4K 4760lm line IP40 1200mm	40.0 W	4757 lm	118.9 lm/W

Building 1 · 1NP · 110

Summary



Building 1 · 1NP · 110

Summary

Results

	Symbol	Calculated	Target	Check	Index
Workplane	$\bar{E}_{\text{perpendicular}}$	167 lx	≥ 150 lx	✓	S34
	g_1	0.92	-	-	S34
Consumption values	Consumption	[42 - 66] kWh/a	max. 400 kWh/a	✓	
Lighting power density	Room	5.46 W/m ²	-	-	
		3.27 W/m ² /100 lx	-	-	
	Workplane	12.10 W/m ²	-	-	
		7.26 W/m ² /100 lx	-	-	

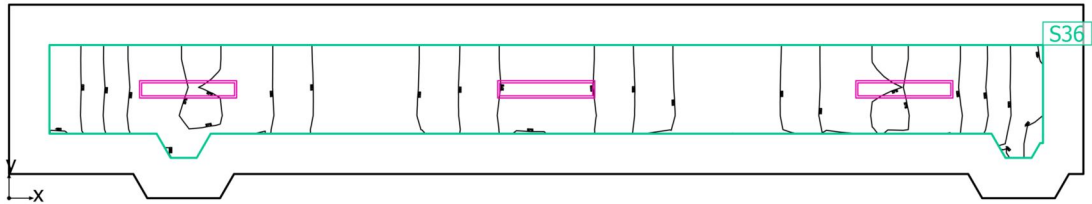
Utilisation profile: Educational premises - Educational buildings, Stairs

Luminaire list

pcs.	Manufacturer	Article No.	Article name	P	Φ	Luminous efficacy
2	BRIGHTSOL	BS06U4K30UNL	BS06U4K30UNL 30W 4K 3270lm line IP40 UGR19 1200mm	30.0 W	3269 lm	109.0 lm/W

Building 1 · 1NP · 111

Summary



Building 1 · 1NP · 111

Summary

Results

	Symbol	Calculated	Target	Check	Index
Workplane	$\bar{E}_{\text{perpendicular}}$	242 lx	≥ 200 lx	✓	S36
	g_1	0.73	-	-	S36
Consumption values	Consumption	[83 - 130] kWh/a	max. 1050 kWh/a	✓	
Lighting power density	Room	4.20 W/m ²	-	-	
		1.73 W/m ² /100 lx	-	-	
	Workplane	8.69 W/m ²	-	-	
		3.58 W/m ² /100 lx	-	-	

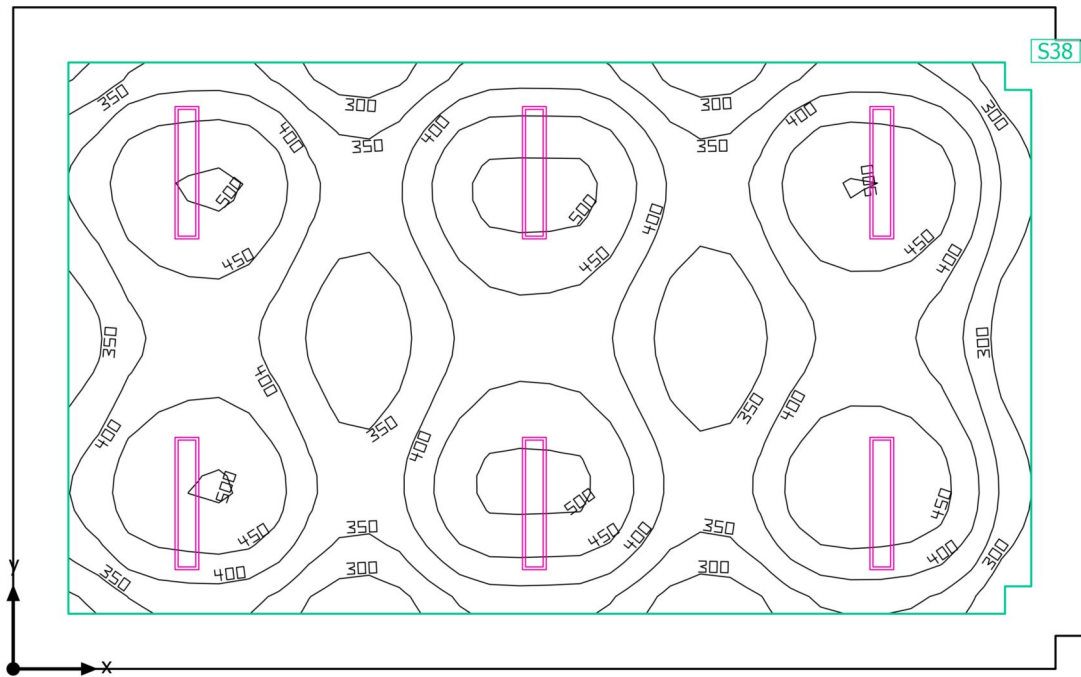
Utilisation profile: Educational premises - Educational buildings, Circulation areas, corridors

Luminaire list

pcs.	Manufacturer	Article No.	Article name	P	Φ	Luminous efficacy
3	BRIGHTSOL	BS02O4K4 0UNL	BS02O4K40UNL 40W 4K 4760lm line IP40 1200mm	40.0 W	4757 lm	118.9 lm/W

Building 1 · 1NP · 112

Summary



Building 1 · 1NP · 112

Summary

Results

	Symbol	Calculated	Target	Check	Index
Workplane	$\bar{E}_{\text{perpendicular}}$	405 lx	≥ 300 lx	✓	S38
	g_1	0.65	-	-	S38
Consumption values	Consumption	[290 - 460] kWh/a	max. 2050 kWh/a	✓	
Lighting power density	Room	4.12 W/m ²	-	-	
		1.02 W/m ² /100 lx	-	-	
	Workplane	5.51 W/m ²	-	-	
		1.36 W/m ² /100 lx	-	-	

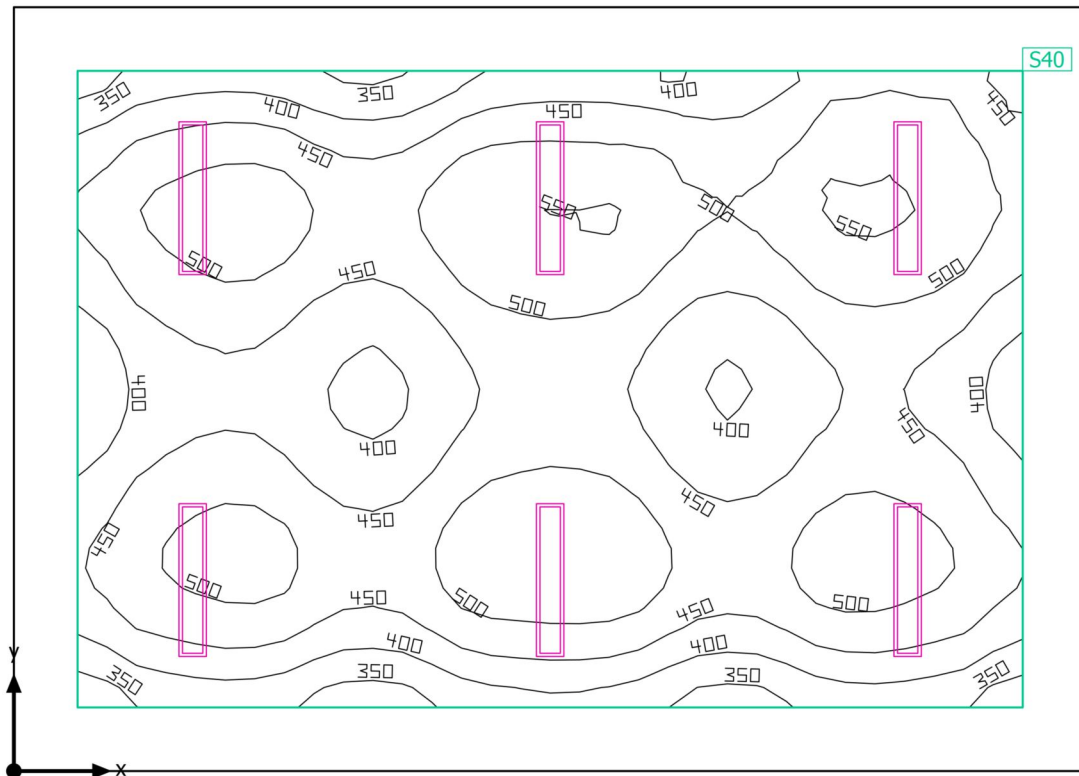
Utilisation profile: Educational premises - Educational buildings, Classroom

Luminaire list

pcs.	Manufacturer	Article No.	Article name	P	Φ	Luminous efficacy
6	BRIGHTSOL	BS02O4K4 0UNL	BS02O4K40UNL 40W 4K 4760lm line IP40 1200mm	40.0 W	4757 lm	118.9 lm/W

Building 1 · 1NP · 113

Summary



Building 1 · 1NP · 113

Summary

Results

	Symbol	Calculated	Target	Check	Index
Workplane	$\bar{E}_{\text{perpendicular}}$	463 lx	≥ 300 lx	✓	S40
	g_1	0.68	-	-	S40
Consumption values	Consumption	[290 - 460] kWh/a	max. 1800 kWh/a	✓	
Lighting power density	Room	4.75 W/m ²	-	-	
		1.03 W/m ² /100 lx	-	-	
	Workplane	6.47 W/m ²	-	-	
		1.40 W/m ² /100 lx	-	-	

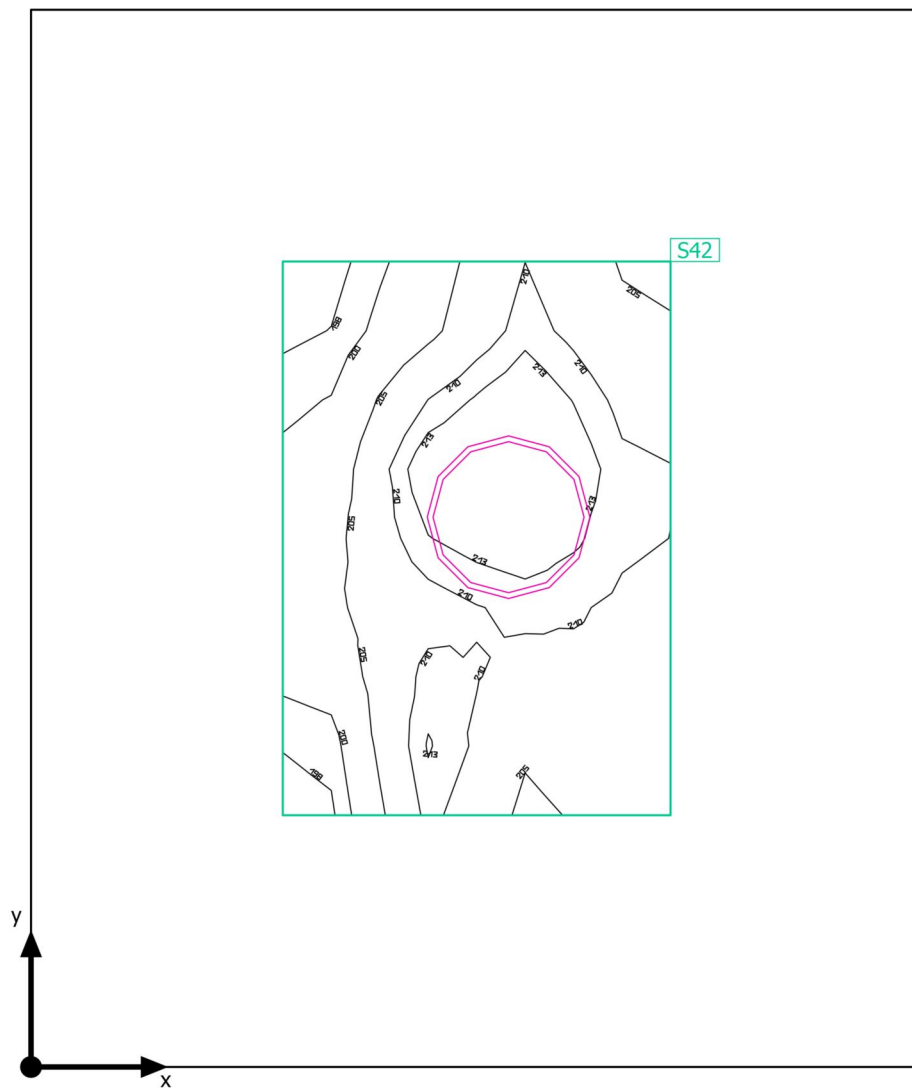
Utilisation profile: Educational premises - Educational buildings, Classroom

Luminaire list

pcs.	Manufacturer	Article No.	Article name	P	Φ	Luminous efficacy
6	BRIGHTSOL	BS02O4K4 0UNL	BS02O4K40UNL 40W 4K 4760lm line IP40 1200mm	40.0 W	4757 lm	118.9 lm/W

Building 1 · 1NP · 114

Summary



Building 1 · 1NP · 114

Summary

Results

	Symbol	Calculated	Target	Check	Index
Workplane	$\bar{E}_{\text{perpendicular}}$	208 lx	≥ 200 lx	✓	S42
	g_1	0.95	-	-	S42
Consumption values	Consumption	[12 - 20] kWh/a	max. 150 kWh/a	✓	
Lighting power density	Room	6.46 W/m ²	-	-	
		3.11 W/m ² /100 lx	-	-	
	Workplane	28.34 W/m ²	-	-	
		13.65 W/m ² /100 lx	-	-	

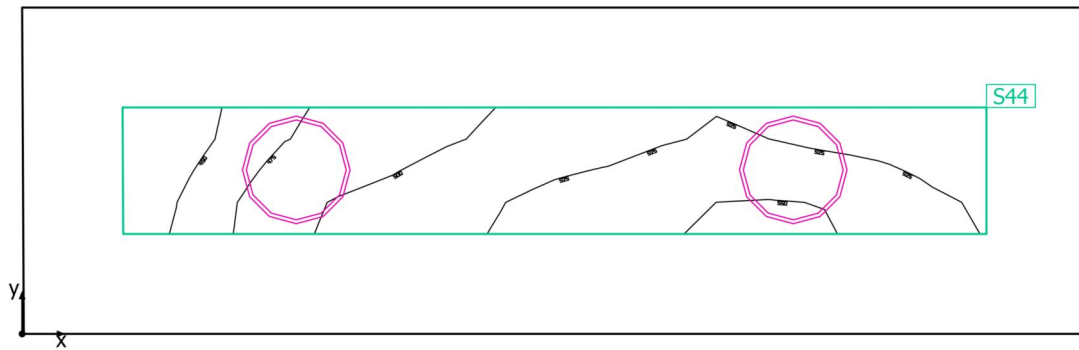
Utilisation profile: General areas inside buildings - Rest, sanitation and first aid rooms, Cloakrooms, washrooms, bathrooms, toilets

Luminaire list

pcs.	Manufacturer	Article No.	Article name	P	Φ	Luminous efficacy
1	BRIGHTSOL	BS04U4K2 4UNK	BS04U4K24UNK 24W 4K 2250lm IP54 D33	24.0 W	2250 lm	93.7 lm/W

Building 1 · 1NP · 115

Summary



Building 1 · 1NP · 115

Summary

Results

	Symbol	Calculated	Target	Check	Index
Workplane	$\bar{E}_{\text{perpendicular}}$	507 lx	≥ 200 lx	✓	S44
	g_1	0.85	-	-	S44
Consumption values	Consumption	[25 - 40] kWh/a	max. 150 kWh/a	✓	
Lighting power density	Room	15.34 W/m ²	-	-	
		3.02 W/m ² /100 lx	-	-	
	Workplane	48.72 W/m ²	-	-	
		9.60 W/m ² /100 lx	-	-	

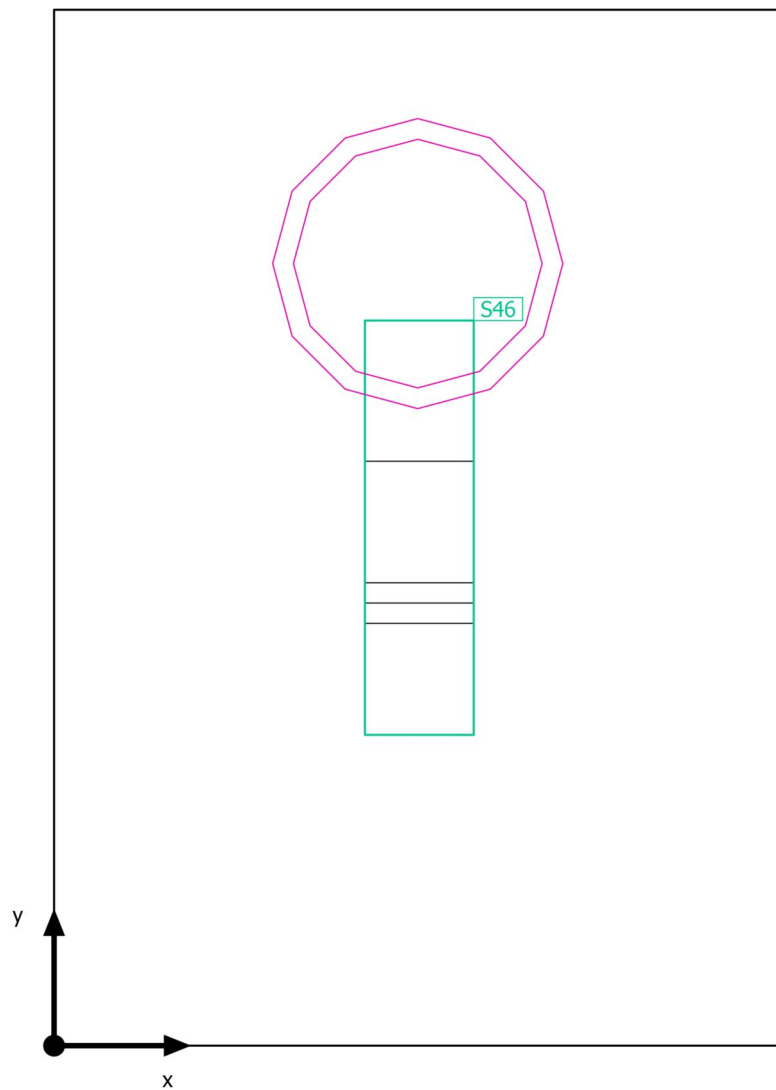
Utilisation profile: General areas inside buildings - Rest, sanitation and first aid rooms, Cloakrooms, washrooms, bathrooms, toilets

Luminaire list

pcs.	Manufacturer	Article No.	Article name	P	Φ	Luminous efficacy
2	BRIGHTSOL	BS04U4K2 4UNK	BS04U4K24UNK 24W 4K 2250lm IP54 D33	24.0 W	2250 lm	93.7 lm/W

Building 1 · 1NP · 116

Summary



Building 1 · 1NP · 116

Summary

Results

	Symbol	Calculated	Target	Check	Index
Workplane	$\bar{E}_{\text{perpendicular}}$	449 lx	≥ 200 lx	✓	S46
	g_1	1.00	-	-	S46
Consumption values	Consumption	17 kWh/a	max. 50 kWh/a	✓	
Lighting power density	Room	29.36 W/m ²	-	-	
		6.53 W/m ² /100 lx	-	-	
	Workplane	492.86 W/m ²	-	-	
		109.68 W/m ² /100 lx	-	-	

Utilisation profile: General areas inside buildings - Rest, sanitation and first aid rooms, Cloakrooms, washrooms, bathrooms, toilets

Luminaire list

pcs.	Manufacturer	Article No.	Article name	P	Φ	Luminous efficacy
1	BRIGHTSOL	BS02U4K18UN	BS02U4K18UN 20,7W 4K 1700lm IP54 D28	20.7 W	1700 lm	82.1 lm/W

Building 1 · 2NP

Luminaire list

 Φ_{total}

155232 lm

 P_{total}

1384.2 W

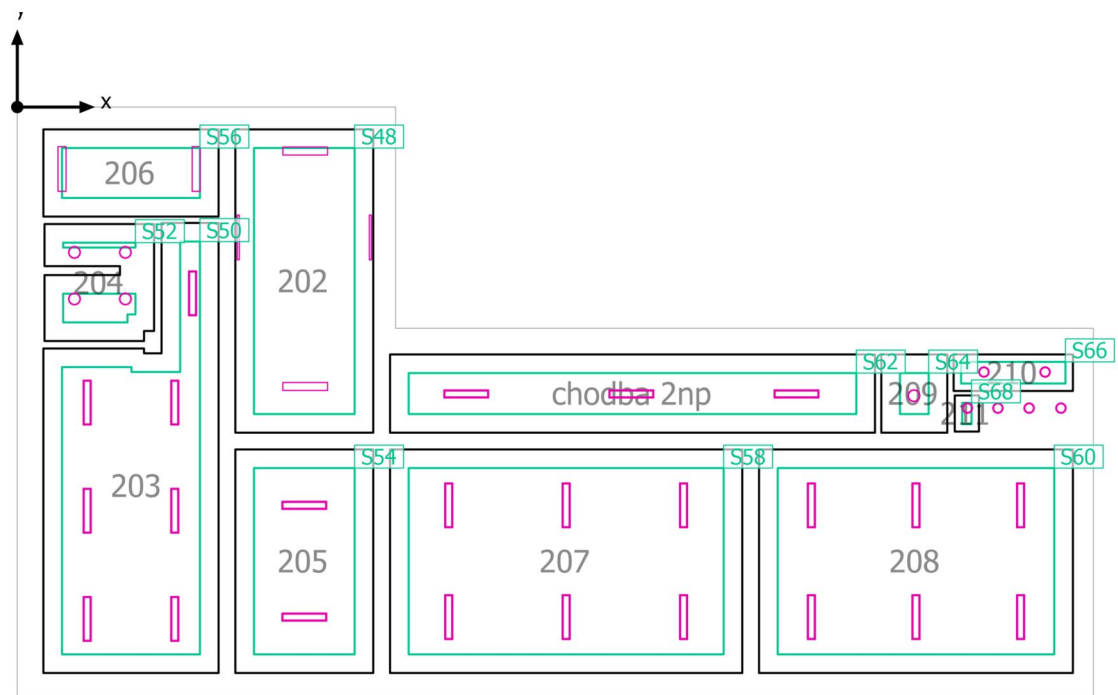
Luminous efficacy

112.1 lm/W

pcs.	Manufacturer	Article No.	Article name	P	Φ	Luminous efficacy
24	BRIGHTSOL	BS02O4K40UNL	BS02O4K40UNL 40W 4K 4760lm line IP40 1200mm	40.0 W	4757 lm	118.9 lm/W
6	BRIGHTSOL	BS02U4K18UN	BS02U4K18UN 20,7W 4K 1700lm IP54 D28	20.7 W	1700 lm	82.1 lm/W
5	BRIGHTSOL	BS04U4K24UNK	BS04U4K24UNK 24W 4K 2250lm IP54 D33	24.0 W	2250 lm	93.7 lm/W
6	BRIGHTSOL	BS06U4K30UNL	BS06U4K30UNL 30W 4K 3270lm line IP40 UGR19 1200mm	30.0 W	3269 lm	109.0 lm/W

Building 1 · 2NP

Calculation objects



Building 1 · 2NP

Calculation objects

Work planes

Properties	\bar{E} (Target)	E_{min}	E_{max}	g_1	g_2	Index
Workplane (202) Perpendicular illuminance (adaptive) Height: 0.850 m, Wall zone: 0.500 m	231 lx (≥ 150 lx) ✓	136 lx	343 lx	0.59	0.40	S48
Workplane (203) Perpendicular illuminance (adaptive) Height: 0.800 m, Wall zone: 0.500 m	524 lx (≥ 300 lx) ✓	318 lx	659 lx	0.61	0.48	S50
Workplane (204) Perpendicular illuminance (adaptive) Height: 0.800 m, Wall zone: 0.500 m	253 lx (≥ 200 lx) ✓	209 lx	301 lx	0.83	0.69	S52
Workplane (205) Perpendicular illuminance (adaptive) Height: 0.800 m, Wall zone: 0.500 m	343 lx (≥ 300 lx) ✓	217 lx	445 lx	0.63	0.49	S54
Workplane (206) Perpendicular illuminance (adaptive) Height: 0.000 m, Wall zone: 0.500 m	154 lx (≥ 150 lx) ✓	148 lx	160 lx	0.96	0.93	S56
Workplane (207) Perpendicular illuminance (adaptive) Height: 0.800 m, Wall zone: 0.500 m	405 lx (≥ 300 lx) ✓	268 lx	505 lx	0.66	0.53	S58
Workplane (208) Perpendicular illuminance (adaptive) Height: 0.800 m, Wall zone: 0.500 m	459 lx (≥ 300 lx) ✓	313 lx	555 lx	0.68	0.56	S60
Workplane (chodba 2np) Perpendicular illuminance (adaptive) Height: 0.800 m, Wall zone: 0.500 m	317 lx (≥ 200 lx) ✓	195 lx	429 lx	0.62	0.45	S62
Workplane (209) Perpendicular illuminance (adaptive) Height: 0.850 m, Wall zone: 0.500 m	214 lx (≥ 200 lx) ✓	198 lx	222 lx	0.93	0.89	S64
Workplane (210) Perpendicular illuminance (adaptive) Height: 0.800 m, Wall zone: 0.200 m	312 lx (≥ 200 lx) ✓	255 lx	356 lx	0.82	0.72	S66

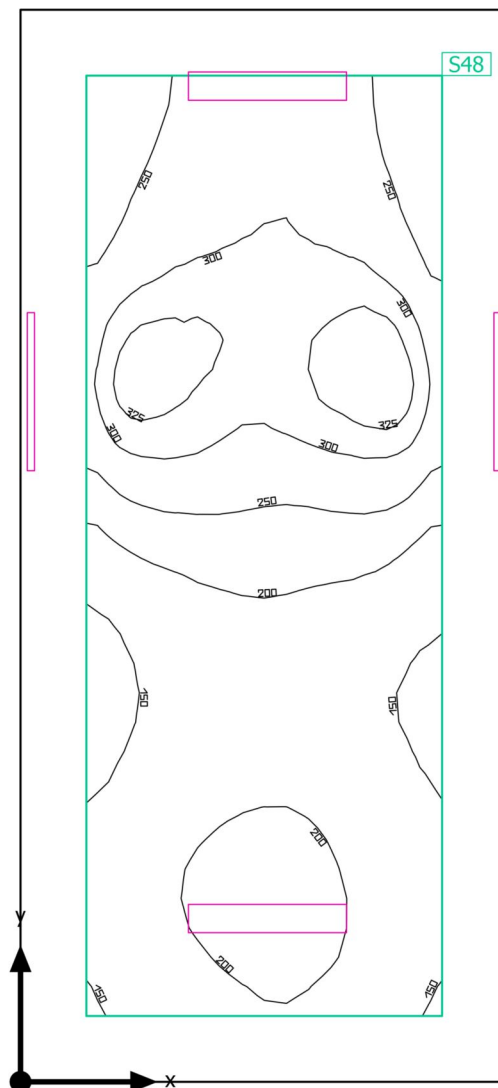
Building 1 · 2NP

Calculation objects

Workplane (211)	257 lx	251 lx	261 lx	0.98	0.96	S68
Perpendicular illuminance (adaptive)	(≥ 200 lx)					
Height: 0.800 m, Wall zone: 0.200 m	✓					

Building 1 · 2NP · 202

Summary



Building 1 · 2NP · 202

Summary

Results

	Symbol	Calculated	Target	Check	Index
Workplane	$\bar{E}_{\text{perpendicular}}$	231 lx	≥ 150 lx	✓	S48
	g_1	0.59	-	-	S48
Consumption values	Consumption	[110 - 130] kWh/a	max. 1100 kWh/a	✓	
Lighting power density	Room	3.98 W/m ²	-	-	
		1.72 W/m ² /100 lx	-	-	
	Workplane	6.22 W/m ²	-	-	
		2.69 W/m ² /100 lx	-	-	

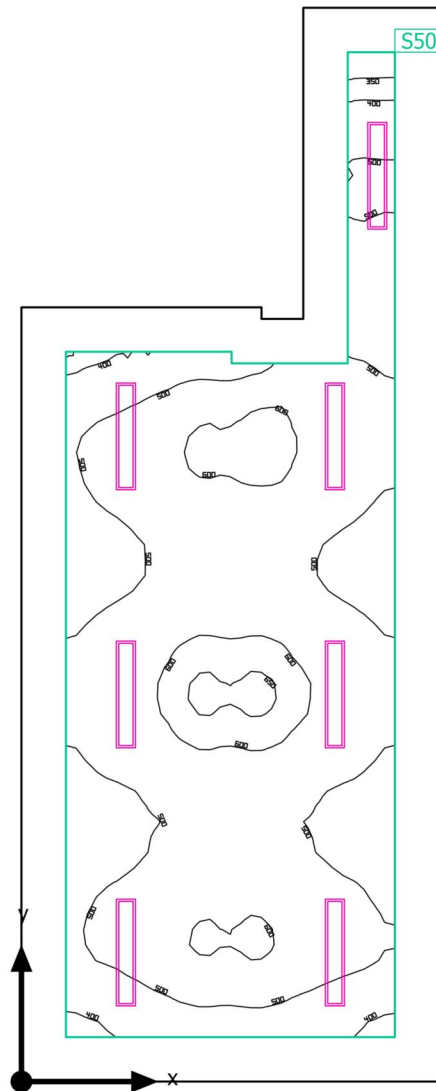
Utilisation profile: Educational premises - Educational buildings, Stairs

Luminaire list

pcs.	Manufacturer	Article No.	Article name	P	Φ	Luminous efficacy
4	BRIGHTSOL	BS06U4K30UNL	BS06U4K30UNL 30W 4K 3270lm line IP40 UGR19 1200mm	30.0 W	3269 lm	109.0 lm/W

Building 1 · 2NP · 203

Summary



Building 1 · 2NP · 203

Summary

Results

	Symbol	Calculated	Target	Check	Index
Workplane	$\bar{E}_{\text{perpendicular}}$	524 lx	≥ 300 lx	✓	S50
	g_1	0.61	-	-	S50
Consumption values	Consumption	[340 - 540] kWh/a	max. 1650 kWh/a	✓	
Lighting power density	Room	6.08 W/m ²	-	-	
		1.16 W/m ² /100 lx	-	-	
	Workplane	9.29 W/m ²	-	-	
		1.77 W/m ² /100 lx	-	-	

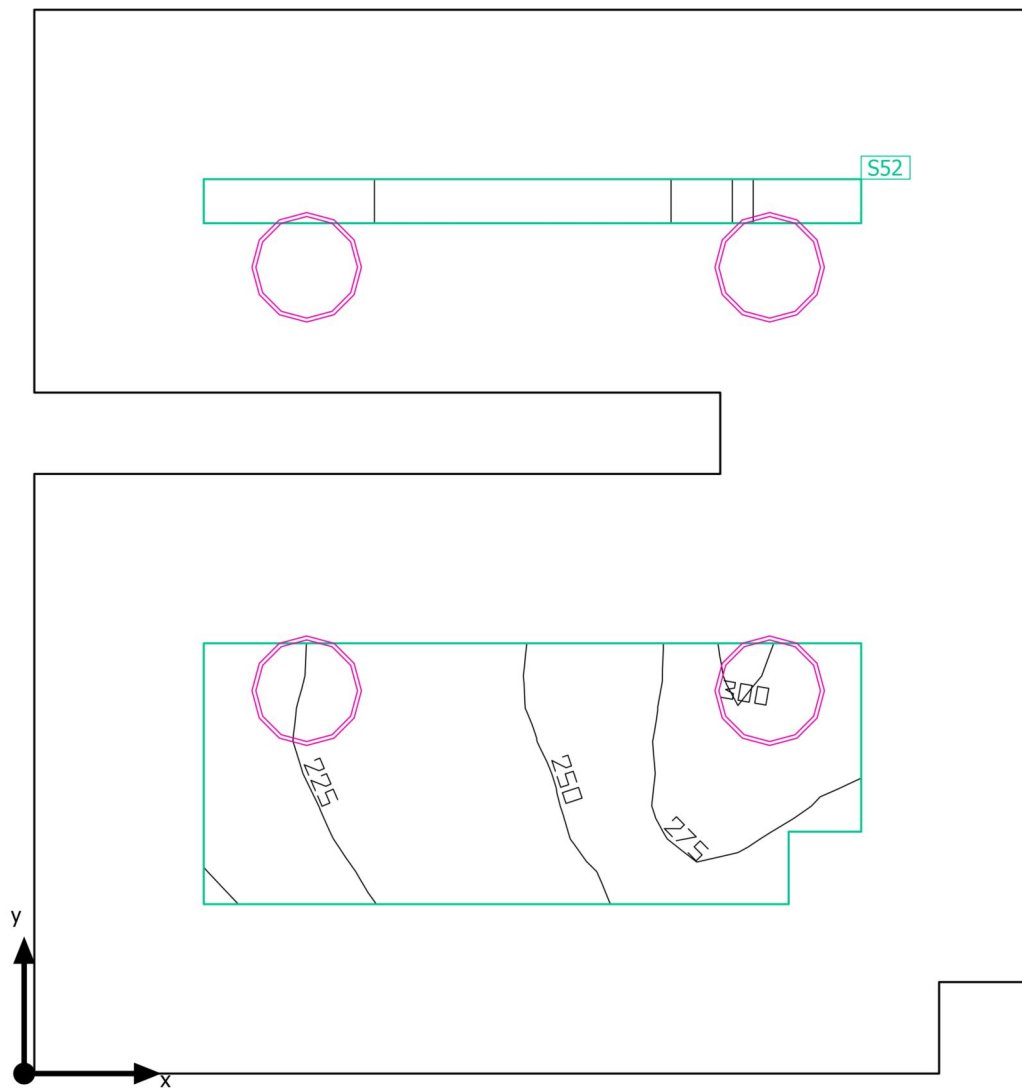
Utilisation profile: Educational premises - Educational buildings, Classroom

Luminaire list

pcs.	Manufacturer	Article No.	Article name	P	Φ	Luminous efficacy
7	BRIGHTSOL	BS02O4K4 0UNL	BS02O4K40UNL 40W 4K 4760lm line IP40 1200mm	40.0 W	4757 lm	118.9 lm/W

Building 1 · 2NP · 204

Summary



Building 1 · 2NP · 204

Summary

Results

	Symbol	Calculated	Target	Check	Index
Workplane	$\bar{E}_{\text{perpendicular}}$	253 lx	≥ 200 lx	✓	S52
	g_1	0.83	-	-	S52
Consumption values	Consumption	[50 - 79] kWh/a	max. 350 kWh/a	✓	
Lighting power density	Room	11.07 W/m ²	-	-	
		4.37 W/m ² /100 lx	-	-	
	Workplane	56.46 W/m ²	-	-	
		22.31 W/m ² /100 lx	-	-	

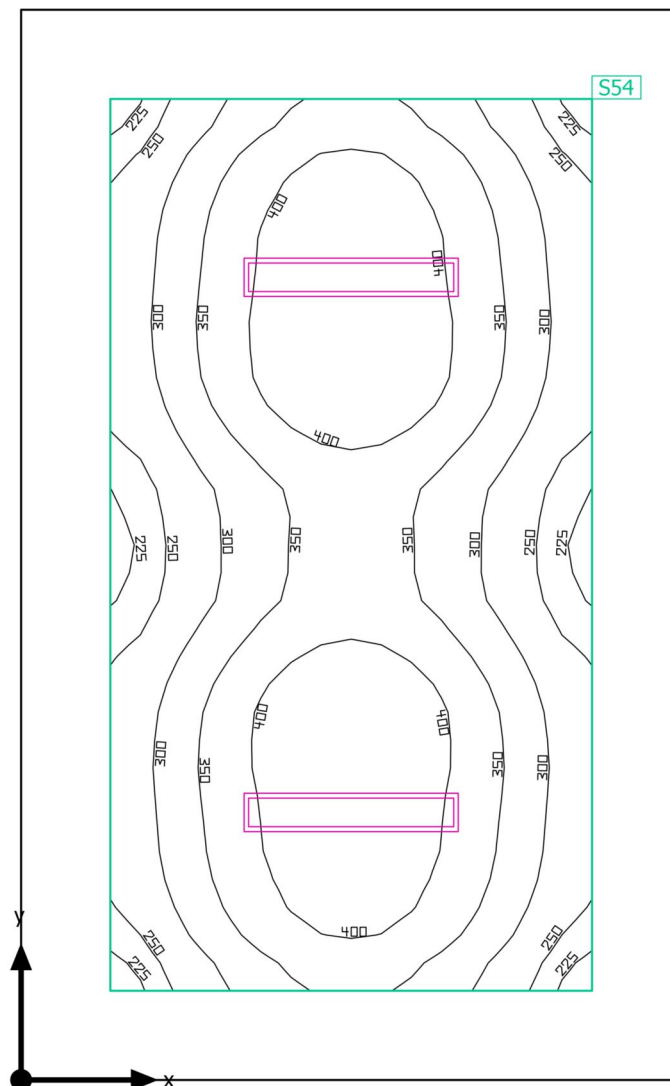
Utilisation profile: General areas inside buildings - Rest, sanitation and first aid rooms, Cloakrooms, washrooms, bathrooms, toilets

Luminaire list

pcs.	Manufacturer	Article No.	Article name	P	Φ	Luminous efficacy
4	BRIGHTSOL	BS04U4K2 4UNK	BS04U4K24UNK 24W 4K 2250lm IP54 D33	24.0 W	2250 lm	93.7 lm/W

Building 1 · 2NP · 205

Summary



Building 1 · 2NP · 205

Summary

Results

	Symbol	Calculated	Target	Check	Index
Workplane	$\bar{E}_{\text{perpendicular}}$	343 lx	≥ 300 lx	✓	S54
	g_1	0.63	-	-	S54
Consumption values	Consumption	[97 - 150] kWh/a	max. 800 kWh/a	✓	
Lighting power density	Room	3.60 W/m ²	-	-	
		1.05 W/m ² /100 lx	-	-	
	Workplane	5.93 W/m ²	-	-	
		1.73 W/m ² /100 lx	-	-	

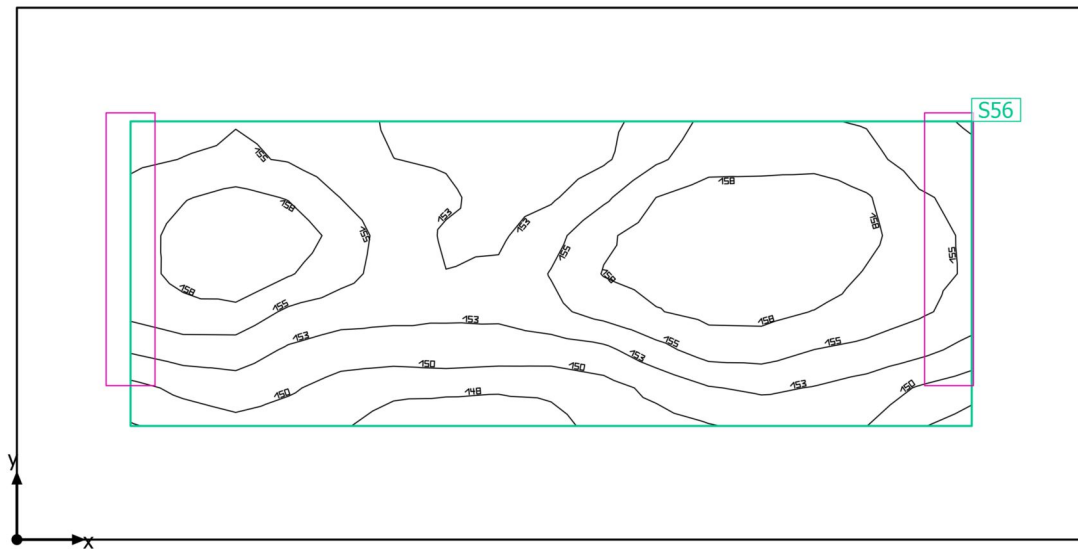
Utilisation profile: Educational premises - Educational buildings, Classroom

Luminaire list

pcs.	Manufacturer	Article No.	Article name	P	Φ	Luminous efficacy
2	BRIGHTSOL	BS02O4K4 0UNL	BS02O4K40UNL 40W 4K 4760lm line IP40 1200mm	40.0 W	4757 lm	118.9 lm/W

Building 1 · 2NP · 206

Summary



Building 1 · 2NP · 206

Summary

Results

	Symbol	Calculated	Target	Check	Index
Workplane	$\bar{E}_{\text{perpendicular}}$	154 lx	≥ 150 lx	✓	S56
	g_1	0.96	-	-	S56
Consumption values	Consumption	[42 - 66] kWh/a	max. 400 kWh/a	✓	
Lighting power density	Room	5.46 W/m ²	-	-	
		3.54 W/m ² /100 lx	-	-	
	Workplane	12.10 W/m ²	-	-	
		7.85 W/m ² /100 lx	-	-	

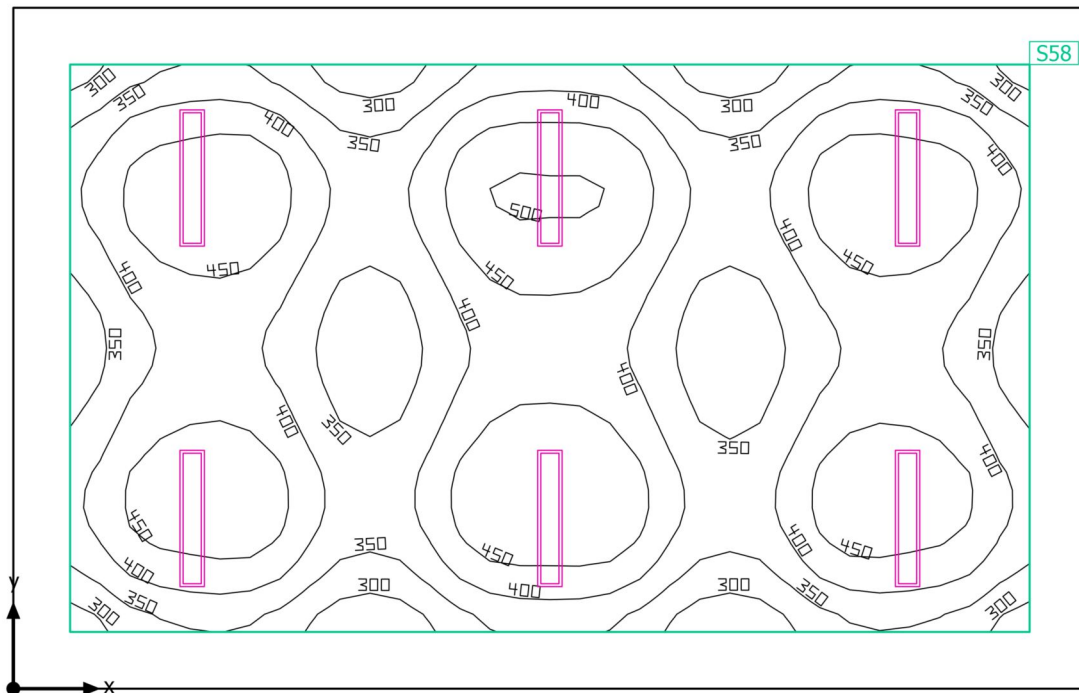
Utilisation profile: Educational premises - Educational buildings, Stairs

Luminaire list

pcs.	Manufacturer	Article No.	Article name	P	Φ	Luminous efficacy
2	BRIGHTSOL	BS06U4K30UNL	BS06U4K30UNL 30W 4K 3270lm line IP40 UGR19 1200mm	30.0 W	3269 lm	109.0 lm/W

Building 1 · 2NP · 207

Summary



Building 1 · 2NP · 207

Summary

Results

	Symbol	Calculated	Target	Check	Index
Workplane	$\bar{E}_{\text{perpendicular}}$	405 lx	≥ 300 lx	✓	S58
	g_1	0.66	-	-	S58
Consumption values	Consumption	[290 - 460] kWh/a	max. 2000 kWh/a	✓	
Lighting power density	Room	4.23 W/m ²	-	-	
		1.05 W/m ² /100 lx	-	-	
	Workplane	5.68 W/m ²	-	-	
		1.40 W/m ² /100 lx	-	-	

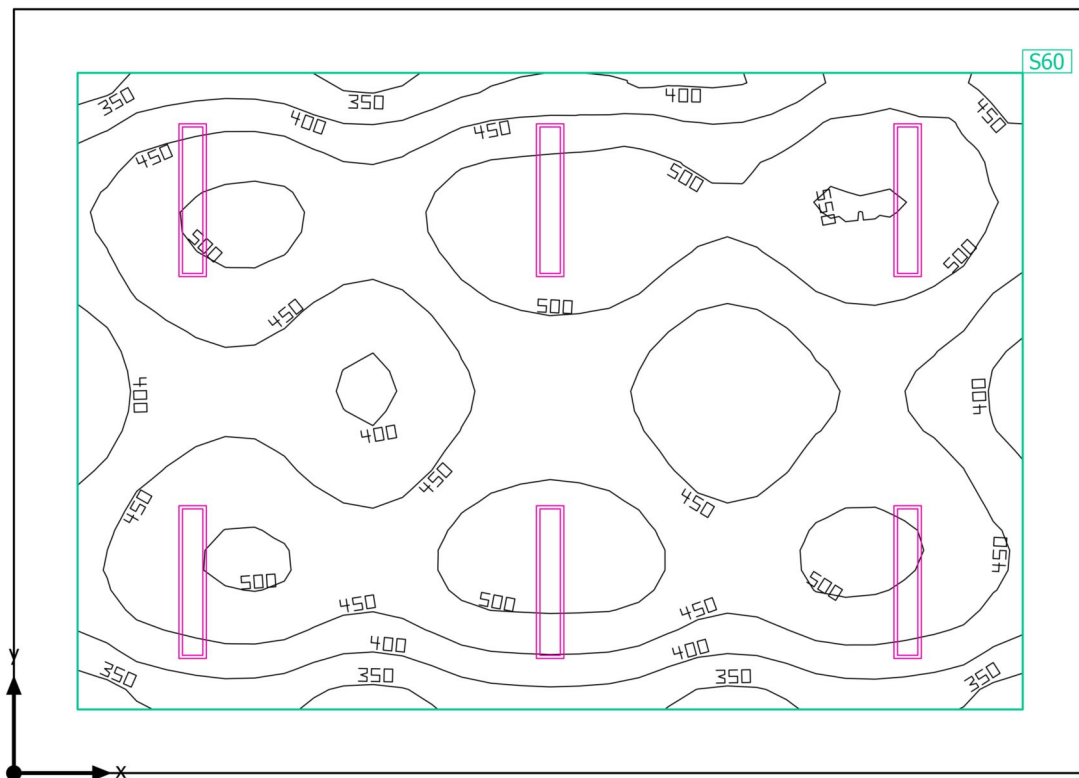
Utilisation profile: Educational premises - Educational buildings, Classroom

Luminaire list

pcs.	Manufacturer	Article No.	Article name	P	Φ	Luminous efficacy
6	BRIGHTSOL	BS02O4K4 0UNL	BS02O4K40UNL 40W 4K 4760lm line IP40 1200mm	40.0 W	4757 lm	118.9 lm/W

Building 1 · 2NP · 208

Summary



Building 1 · 2NP · 208

Summary

Results

	Symbol	Calculated	Target	Check	Index
Workplane	$\bar{E}_{\text{perpendicular}}$	459 lx	≥ 300 lx	✓	S60
	g_1	0.68	-	-	S60
Consumption values	Consumption	[290 - 460] kWh/a	max. 1800 kWh/a	✓	
Lighting power density	Room	4.75 W/m ²	-	-	
		1.04 W/m ² /100 lx	-	-	
	Workplane	6.47 W/m ²	-	-	
		1.41 W/m ² /100 lx	-	-	

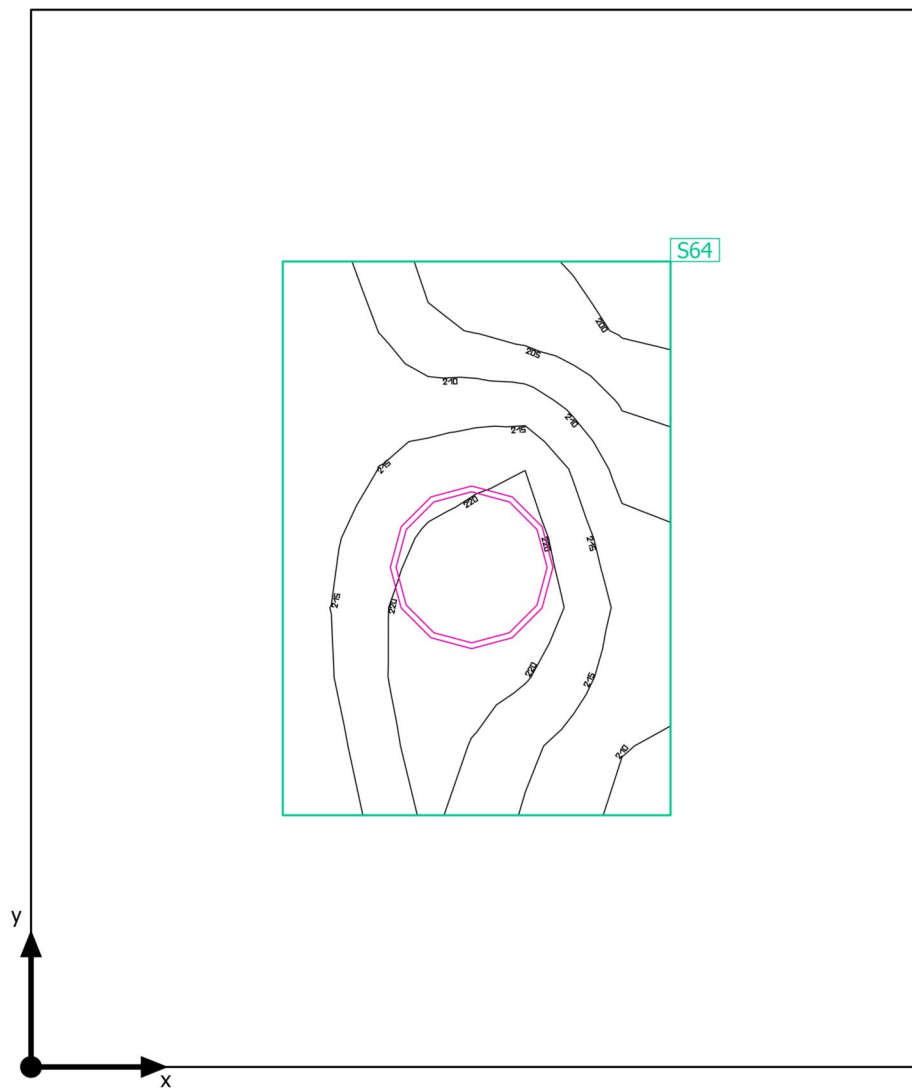
Utilisation profile: Educational premises - Educational buildings, Classroom

Luminaire list

pcs.	Manufacturer	Article No.	Article name	P	Φ	Luminous efficacy
6	BRIGHTSOL	BS02O4K4 0UNL	BS02O4K40UNL 40W 4K 4760lm line IP40 1200mm	40.0 W	4757 lm	118.9 lm/W

Building 1 · 2NP · 209

Summary



Building 1 · 2NP · 209

Summary

Results

	Symbol	Calculated	Target	Check	Index
Workplane	$\bar{E}_{\text{perpendicular}}$	214 lx	≥ 200 lx	✓	S64
	g_1	0.93	-	-	S64
Consumption values	Consumption	[12 - 20] kWh/a	max. 150 kWh/a	✓	
Lighting power density	Room	6.46 W/m ²	-	-	
		3.02 W/m ² /100 lx	-	-	
	Workplane	28.34 W/m ²	-	-	
		13.27 W/m ² /100 lx	-	-	

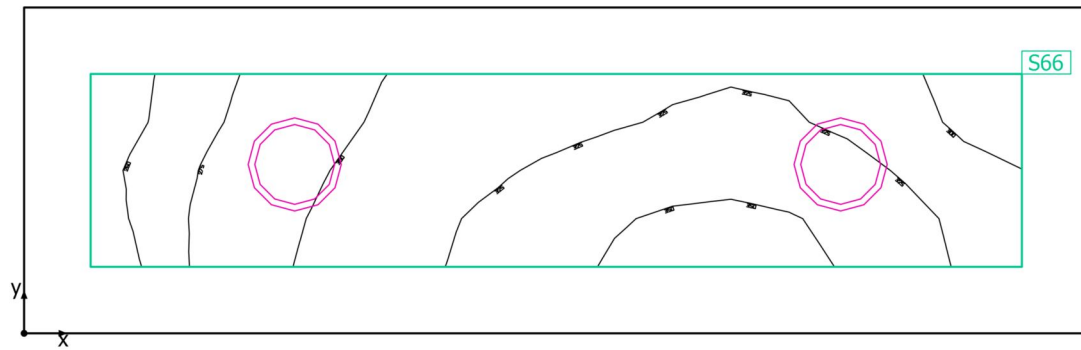
Utilisation profile: General areas inside buildings - Rest, sanitation and first aid rooms, Cloakrooms, washrooms, bathrooms, toilets

Luminaire list

pcs.	Manufacturer	Article No.	Article name	P	Φ	Luminous efficacy
1	BRIGHTSOL	BS04U4K2 4UNK	BS04U4K24UNK 24W 4K 2250lm IP54 D33	24.0 W	2250 lm	93.7 lm/W

Building 1 · 2NP · 210

Summary



Building 1 · 2NP · 210

Summary

Results

	Symbol	Calculated	Target	Check	Index
Workplane	$\bar{E}_{\text{perpendicular}}$	312 lx	≥ 200 lx	✓	S66
	g_1	0.82	-	-	S66
Consumption values	Consumption	[22 - 34] kWh/a	max. 150 kWh/a	✓	
Lighting power density	Room	13.20 W/m ²	-	-	
		4.23 W/m ² /100 lx	-	-	
	Workplane	25.49 W/m ²	-	-	
		8.17 W/m ² /100 lx	-	-	

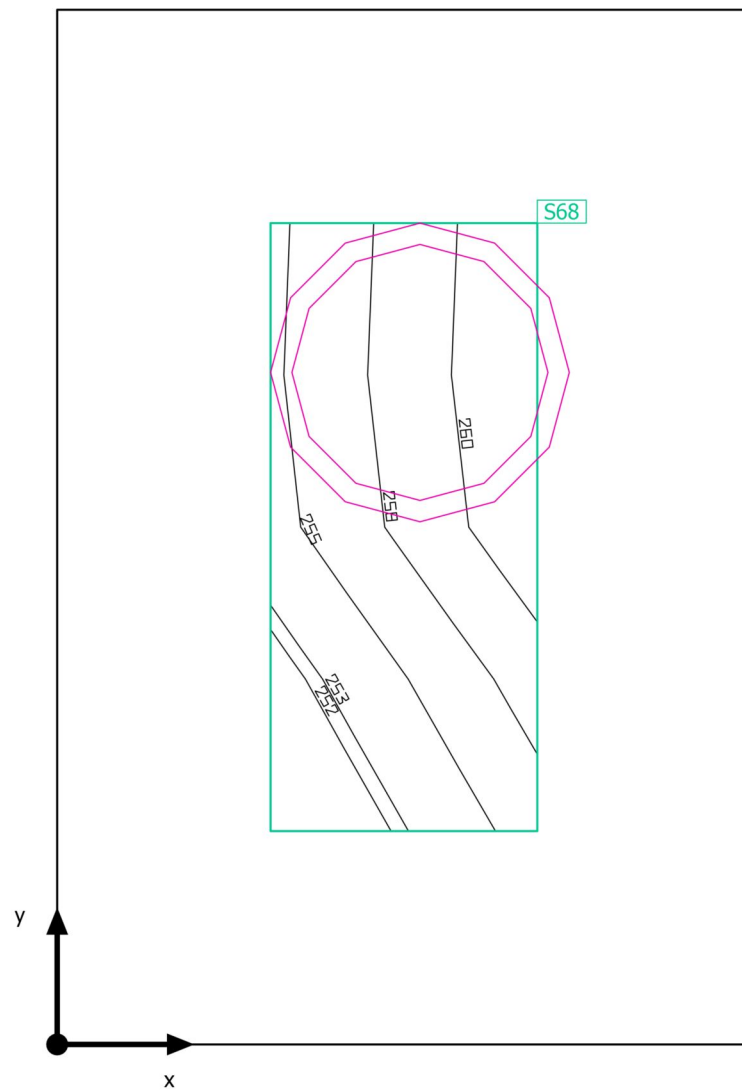
Utilisation profile: General areas inside buildings - Rest, sanitation and first aid rooms, Cloakrooms, washrooms, bathrooms, toilets

Luminaire list

pcs.	Manufacturer	Article No.	Article name	P	Φ	Luminous efficacy
2	BRIGHTSOL	BS02U4K18UN	BS02U4K18UN 20,7W 4K 1700lm IP54 D28	20.7 W	1700 lm	82.1 lm/W

Building 1 · 2NP · 211

Summary



Building 1 · 2NP · 211

Summary

Results

	Symbol	Calculated	Target	Check	Index
Workplane	$\bar{E}_{\text{perpendicular}}$	257 lx	≥ 200 lx	✓	S68
	g_1	0.98	-	-	S68
Consumption values	Consumption	17 kWh/a	max. 50 kWh/a	✓	
Lighting power density	Room	32.83 W/m ²	-	-	
		12.79 W/m ² /100 lx	-	-	
	Workplane	145.26 W/m ²	-	-	
		56.58 W/m ² /100 lx	-	-	

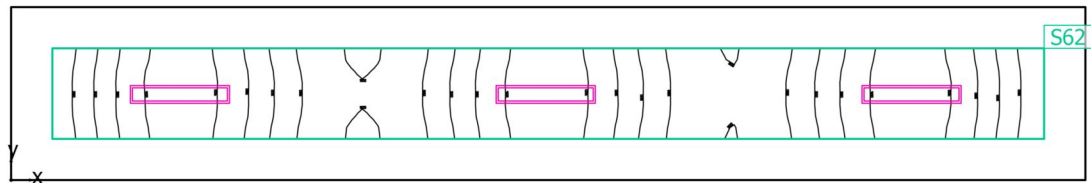
Utilisation profile: General areas inside buildings - Rest, sanitation and first aid rooms, Cloakrooms, washrooms, bathrooms, toilets

Luminaire list

pcs.	Manufacturer	Article No.	Article name	P	Φ	Luminous efficacy
1	BRIGHTSOL	BS02U4K18UN	BS02U4K18UN 20,7W 4K 1700lm IP54 D28	20.7 W	1700 lm	82.1 lm/W

Building 1 · 2NP · chodba 2np

Summary



Building 1 · 2NP · chodba 2np

Summary

Results

	Symbol	Calculated	Target	Check	Index
Workplane	$\bar{E}_{\text{perpendicular}}$	317 lx	≥ 200 lx	✓	S62
	g_1	0.62	-	-	S62
Consumption values	Consumption	[150 - 230] kWh/a	max. 1000 kWh/a	✓	
Lighting power density	Room	4.39 W/m ²	-	-	
		1.39 W/m ² /100 lx	-	-	
	Workplane	9.08 W/m ²	-	-	
		2.87 W/m ² /100 lx	-	-	

Utilisation profile: Places of public assembly - General areas, Entrance halls

Luminaire list

pcs.	Manufacturer	Article No.	Article name	P	Φ	Luminous efficacy
3	BRIGHTSOL	BS02O4K4 0UNL	BS02O4K40UNL 40W 4K 4760lm line IP40 1200mm	40.0 W	4757 lm	118.9 lm/W

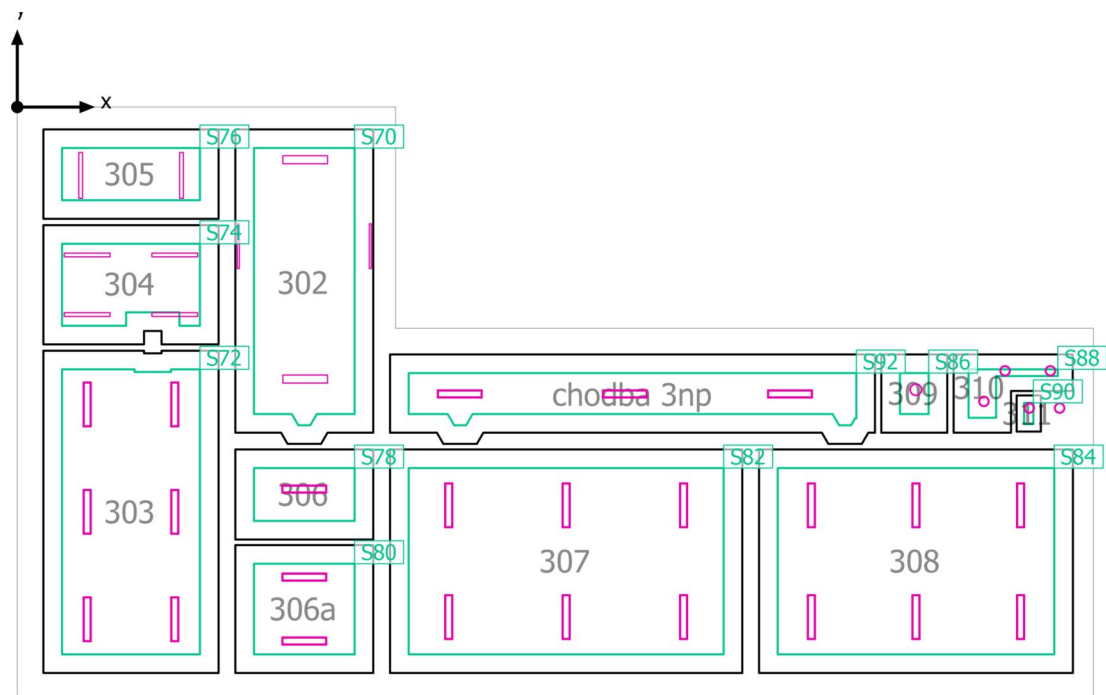
Building 1 · 3NP

Luminaire list

Φ_{total} 167736 lm	P_{total} 1420.5 W	Luminous efficacy 118.1 lm/W
------------------------------------	--------------------------------	---------------------------------

pcs.	Manufacturer	Article No.	Article name	P	Φ	Luminous efficacy
6	BRIGHTSOL	BS01P4K36UN	BS01P4K36UN 35,5W 4K 5227lm line IP65 1200mm	35.5 W	4957 lm	139.6 lm/W
24	BRIGHTSOL	BS02O4K40UNL	BS02O4K40UNL 40W 4K 4760lm line IP40 1200mm	40.0 W	4757 lm	118.9 lm/W
5	BRIGHTSOL	BS02U4K18UN	BS02U4K18UN 20,7W 4K 1700lm IP54 D28	20.7 W	1700 lm	82.1 lm/W
1	BRIGHTSOL	BS04U4K24UNK	BS04U4K24UNK 24W 4K 2250lm IP54 D33	24.0 W	2250 lm	93.7 lm/W
4	BRIGHTSOL	BS06U4K30UNL	BS06U4K30UNL 30W 4K 3270lm line IP40 UGR19 1200mm	30.0 W	3269 lm	109.0 lm/W

Building 1 · 3NP

Calculation objects

Building 1 · 3NP

Calculation objects

Work planes

Properties	\bar{E} (Target)	E_{min}	E_{max}	g_1	g_2	Index
Workplane (302) Perpendicular illuminance (adaptive) Height: 0.850 m, Wall zone: 0.500 m	186 lx (≥ 150 lx) ✓	129 lx	251 lx	0.69	0.51	S70
Workplane (303) Perpendicular illuminance (adaptive) Height: 0.800 m, Wall zone: 0.500 m	529 lx (≥ 200 lx) ✓	374 lx	662 lx	0.71	0.56	S72
Workplane (304) Perpendicular illuminance (adaptive) Height: 0.850 m, Wall zone: 0.500 m	563 lx (≥ 500 lx) ✓	464 lx	610 lx	0.82	0.76	S74
Workplane (305) Perpendicular illuminance (adaptive) Height: 0.850 m, Wall zone: 0.500 m	329 lx (≥ 200 lx) ✓	300 lx	346 lx	0.91	0.87	S76
Workplane (306) Perpendicular illuminance (adaptive) Height: 0.800 m, Wall zone: 0.500 m	358 lx (≥ 300 lx) ✓	246 lx	433 lx	0.69	0.57	S78
Workplane (306a) Perpendicular illuminance (adaptive) Height: 0.800 m, Wall zone: 0.500 m	514 lx (≥ 300 lx) ✓	334 lx	717 lx	0.65	0.47	S80
Workplane (307) Perpendicular illuminance (adaptive) Height: 0.850 m, Wall zone: 0.500 m	409 lx (≥ 300 lx) ✓	265 lx	517 lx	0.65	0.51	S82
Workplane (308) Perpendicular illuminance (adaptive) Height: 0.850 m, Wall zone: 0.500 m	453 lx (≥ 300 lx) ✓	314 lx	539 lx	0.69	0.58	S84
Workplane (309) Perpendicular illuminance (adaptive) Height: 0.850 m, Wall zone: 0.500 m	209 lx (≥ 200 lx) ✓	199 lx	215 lx	0.95	0.93	S86
Workplane (310) Perpendicular illuminance (adaptive) Height: 0.850 m, Wall zone: 0.400 m	334 lx (≥ 200 lx) ✓	282 lx	401 lx	0.84	0.70	S88
Workplane (311) Perpendicular illuminance (adaptive) Height: 0.850 m, Wall zone: 0.200 m	200 lx (≥ 200 lx) ✓	195 lx	203 lx	0.98	0.96	S90

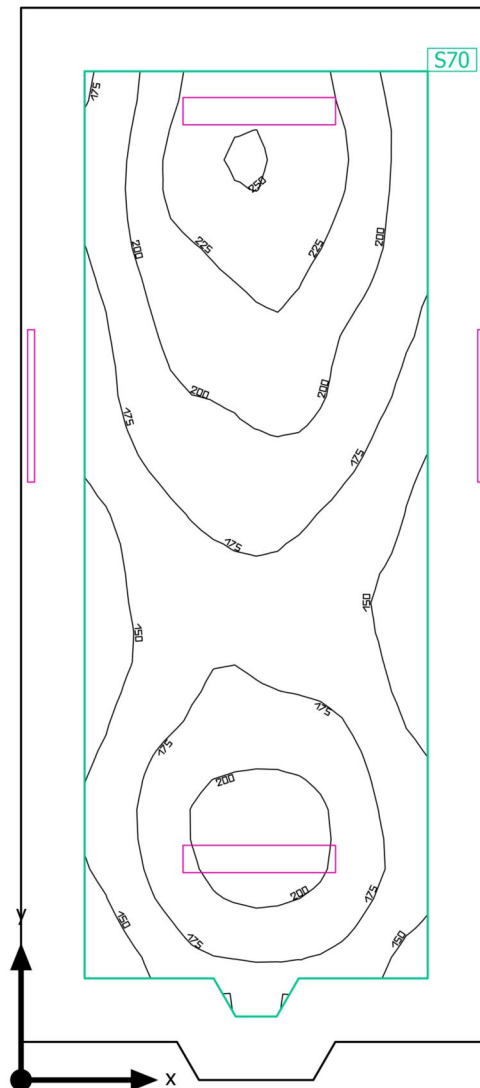
Building 1 · 3NP

Calculation objects

Workplane (chodba 3np)	321 lx	173 lx	441 lx	0.54	0.39	S92
Perpendicular illuminance (adaptive)	(≥ 200 lx)					
Height: 0.850 m, Wall zone: 0.500 m	✓					

Building 1 · 3NP · 302

Summary



Building 1 · 3NP · 302

Summary

Results

	Symbol	Calculated	Target	Check	Index
Workplane	$\bar{E}_{\text{perpendicular}}$	186 lx	≥ 150 lx	✓	S70
	g_1	0.69	-	-	S70
Consumption values	Consumption	[83 - 130] kWh/a	max. 1100 kWh/a	✓	
Lighting power density	Room	3.94 W/m ²	-	-	
		2.12 W/m ² /100 lx	-	-	
	Workplane	6.18 W/m ²	-	-	
		3.32 W/m ² /100 lx	-	-	

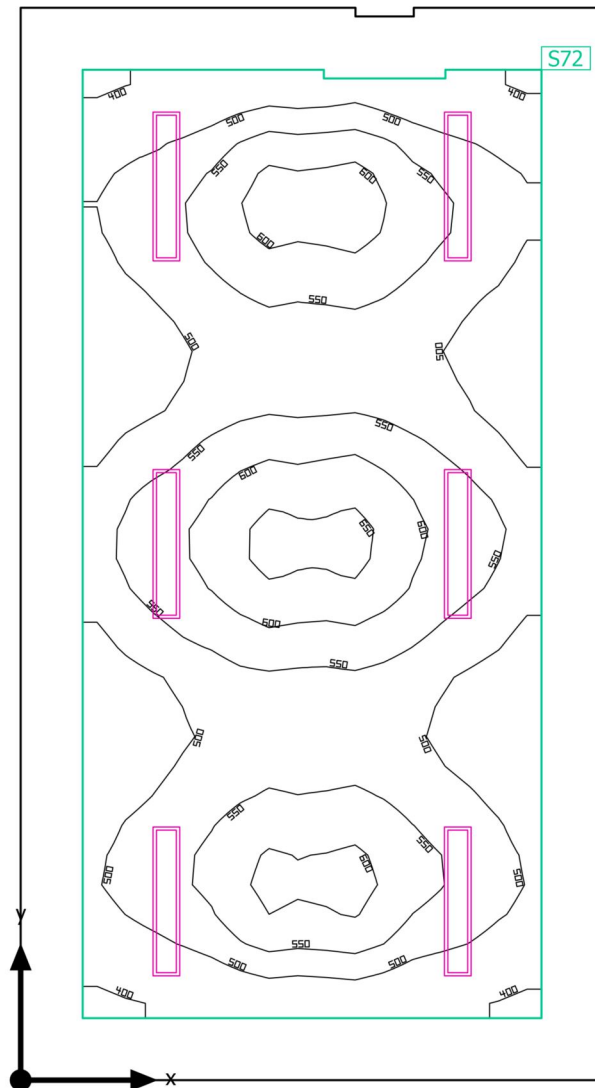
Utilisation profile: Educational premises - Educational buildings, Stairs

Luminaire list

pcs.	Manufacturer	Article No.	Article name	P	Φ	Luminous efficacy
4	BRIGHTSOL	BS06U4K30UNL	BS06U4K30UNL 30W 4K 3270lm line IP40 UGR19 1200mm	30.0 W	3269 lm	109.0 lm/W

Building 1 · 3NP · 303

Summary



Building 1 · 3NP · 303

Summary

Results

	Symbol	Calculated	Target	Check	Index
Workplane	$\bar{E}_{\text{perpendicular}}$	529 lx	≥ 200 lx	✓	S72
	g_1	0.71	-	-	S72
Consumption values	Consumption	[250 - 420] kWh/a	max. 1450 kWh/a	✓	
Lighting power density	Room	5.91 W/m ²	-	-	
		1.12 W/m ² /100 lx	-	-	
	Workplane	8.50 W/m ²	-	-	
		1.61 W/m ² /100 lx	-	-	

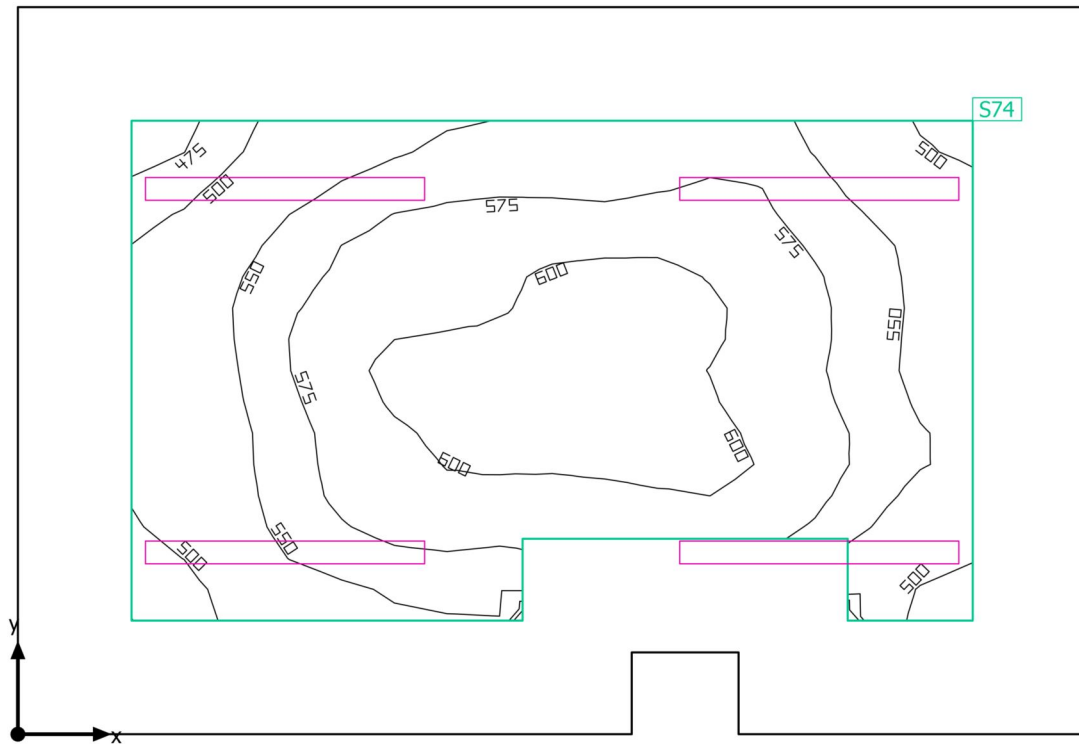
Utilisation profile: Educational premises - Educational buildings, School canteens

Luminaire list

pcs.	Manufacturer	Article No.	Article name	P	Φ	Luminous efficacy
6	BRIGHTSOL	BS02O4K4 0UNL	BS02O4K40UNL 40W 4K 4760lm line IP40 1200mm	40.0 W	4757 lm	118.9 lm/W

Building 1 · 3NP · 304

Summary



Building 1 · 3NP · 304

Summary

Results

	Symbol	Calculated	Target	Check	Index
Workplane	$\bar{E}_{\text{perpendicular}}$	563 lx	≥ 500 lx	✓	S74
	g_1	0.82	-	-	S74
Consumption values	Consumption	[420 - 550] kWh/a	max. 550 kWh/a	✓	
Lighting power density	Room	9.55 W/m ²	-	-	
		1.69 W/m ² /100 lx	-	-	
	Workplane	18.62 W/m ²	-	-	
		3.31 W/m ² /100 lx	-	-	

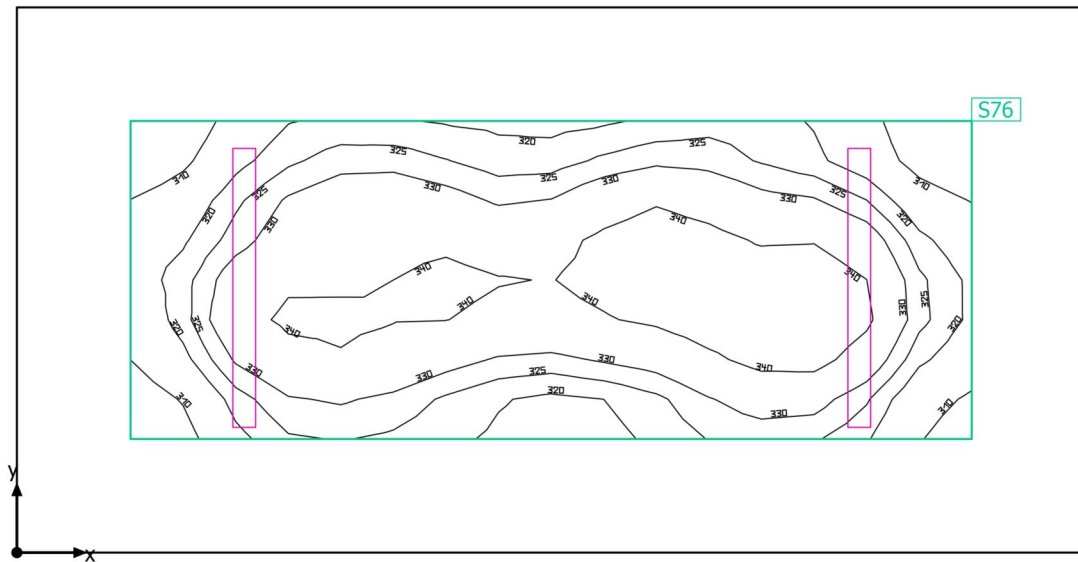
Utilisation profile: Educational premises - Educational buildings, Kitchens

Luminaire list

pcs.	Manufacturer	Article No.	Article name	P	Φ	Luminous efficacy
4	BRIGHTSOL	BS01P4K36UN	BS01P4K36UN 35,5W 4K 5227lm line IP65 1200mm	35.5 W	4957 lm	139.6 lm/W

Building 1 · 3NP · 305

Summary



Building 1 · 3NP · 305

Summary

Results

	Symbol	Calculated	Target	Check	Index
Workplane	$\bar{E}_{\text{perpendicular}}$	329 lx	≥ 200 lx	✓	S76
	g_1	0.91	-	-	S76
Consumption values	Consumption	[7 - 12] kWh/a	max. 400 kWh/a	✓	
Lighting power density	Room	6.29 W/m ²	-	-	
		1.91 W/m ² /100 lx	-	-	
	Workplane	13.71 W/m ²	-	-	
		4.17 W/m ² /100 lx	-	-	

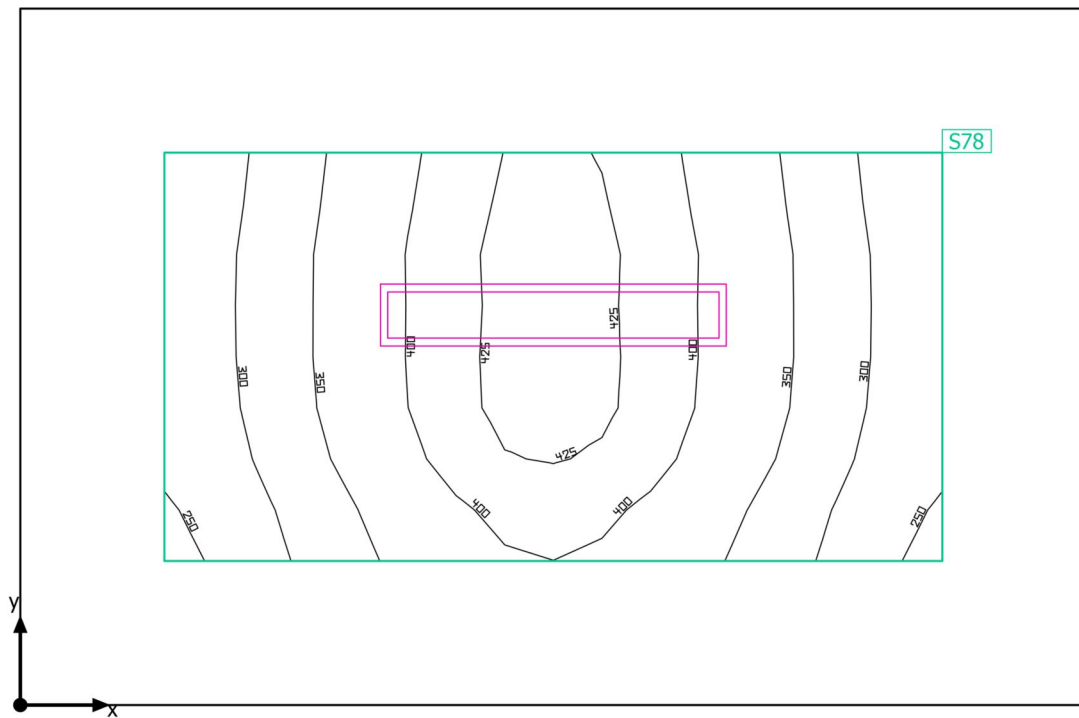
Utilisation profile: General areas inside buildings - Store rooms and cold stores, Store and stockrooms

Luminaire list

pcs.	Manufacturer	Article No.	Article name	P	Φ	Luminous efficacy
2	BRIGHTSOL	BS01P4K36UN	BS01P4K36UN 35,5W 4K 5227lm line IP65 1200mm	35.5 W	4957 lm	139.6 lm/W

Building 1 · 3NP · 306

Summary



Building 1 · 3NP · 306

Summary

Results

	Symbol	Calculated	Target	Check	Index
Workplane	$\bar{E}_{\text{perpendicular}}$	358 lx	≥ 300 lx	✓	S78
	g_1	0.69	-	-	S78
Consumption values	Consumption	77 kWh/a	max. 350 kWh/a	✓	
Lighting power density	Room	4.47 W/m ²	-	-	
		1.25 W/m ² /100 lx	-	-	
	Workplane	10.45 W/m ²	-	-	
		2.92 W/m ² /100 lx	-	-	

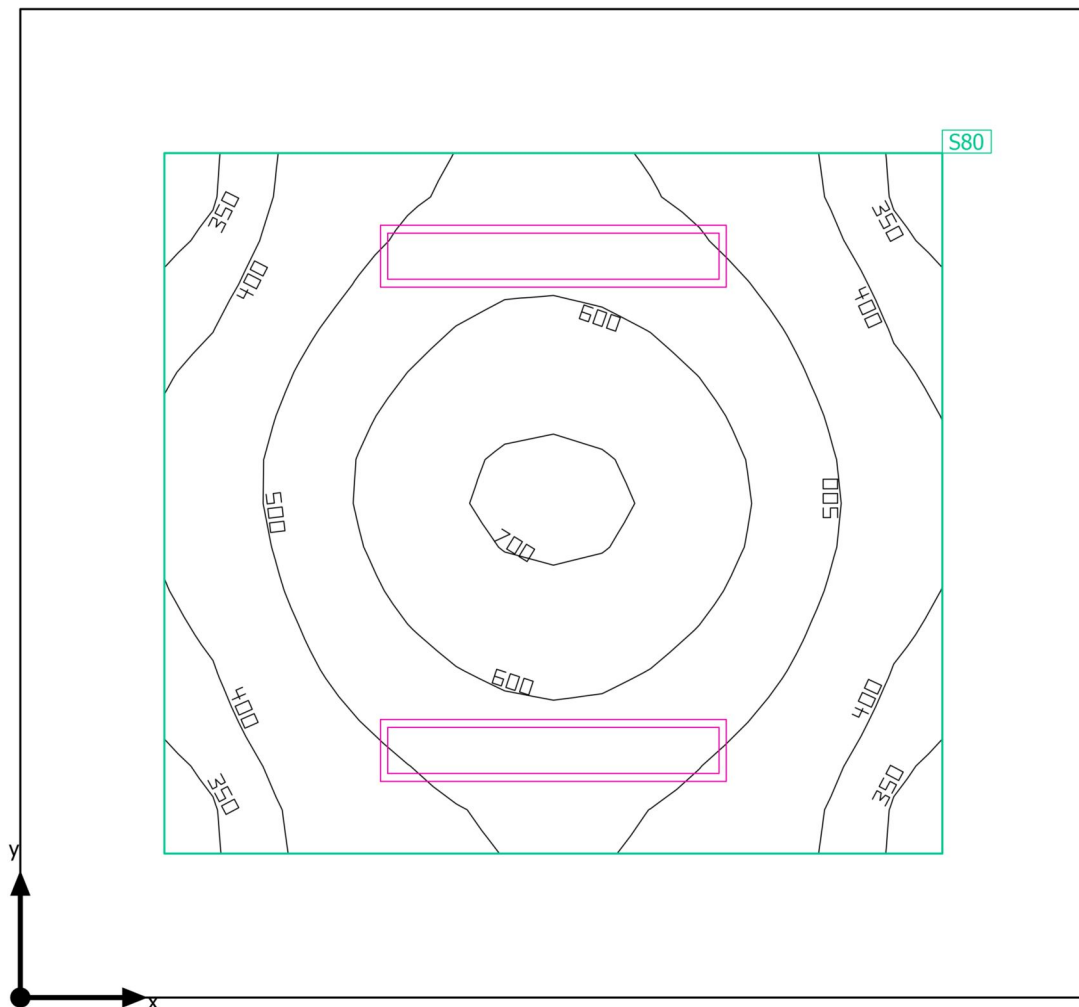
Utilisation profile: Educational premises - Educational buildings, Classroom

Luminaire list

pcs.	Manufacturer	Article No.	Article name	P	Φ	Luminous efficacy
1	BRIGHTSOL	BS02O4K4 0UNL	BS02O4K40UNL 40W 4K 4760lm line IP40 1200mm	40.0 W	4757 lm	118.9 lm/W

Building 1 · 3NP · 306a

Summary



Building 1 · 3NP · 306a

Summary

Results

	Symbol	Calculated	Target	Check	Index
Workplane	$\bar{E}_{\text{perpendicular}}$	514 lx	≥ 300 lx	✓	S80
	g_1	0.65	-	-	S80
Consumption values	Consumption	[97 - 150] kWh/a	max. 450 kWh/a	✓	
Lighting power density	Room	6.30 W/m ²	-	-	
		1.22 W/m ² /100 lx	-	-	
	Workplane	12.18 W/m ²	-	-	
		2.37 W/m ² /100 lx	-	-	

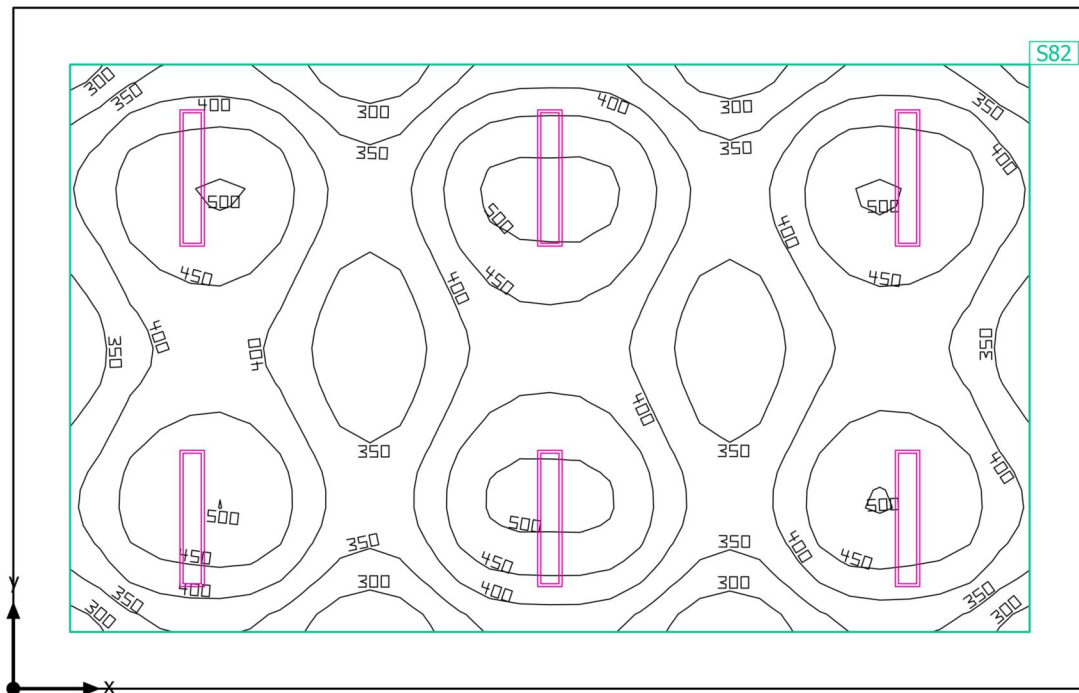
Utilisation profile: Educational premises - Educational buildings, Classroom

Luminaire list

pcs.	Manufacturer	Article No.	Article name	P	Φ	Luminous efficacy
2	BRIGHTSOL	BS02O4K4 0UNL	BS02O4K40UNL 40W 4K 4760lm line IP40 1200mm	40.0 W	4757 lm	118.9 lm/W

Building 1 · 3NP · 307

Summary



Building 1 · 3NP · 307

Summary

Results

	Symbol	Calculated	Target	Check	Index
Workplane	$\bar{E}_{\text{perpendicular}}$	409 lx	≥ 300 lx	✓	S82
	g_1	0.65	-	-	S82
Consumption values	Consumption	[290 - 460] kWh/a	max. 2000 kWh/a	✓	
Lighting power density	Room	4.23 W/m ²	-	-	
		1.03 W/m ² /100 lx	-	-	
	Workplane	5.68 W/m ²	-	-	
		1.39 W/m ² /100 lx	-	-	

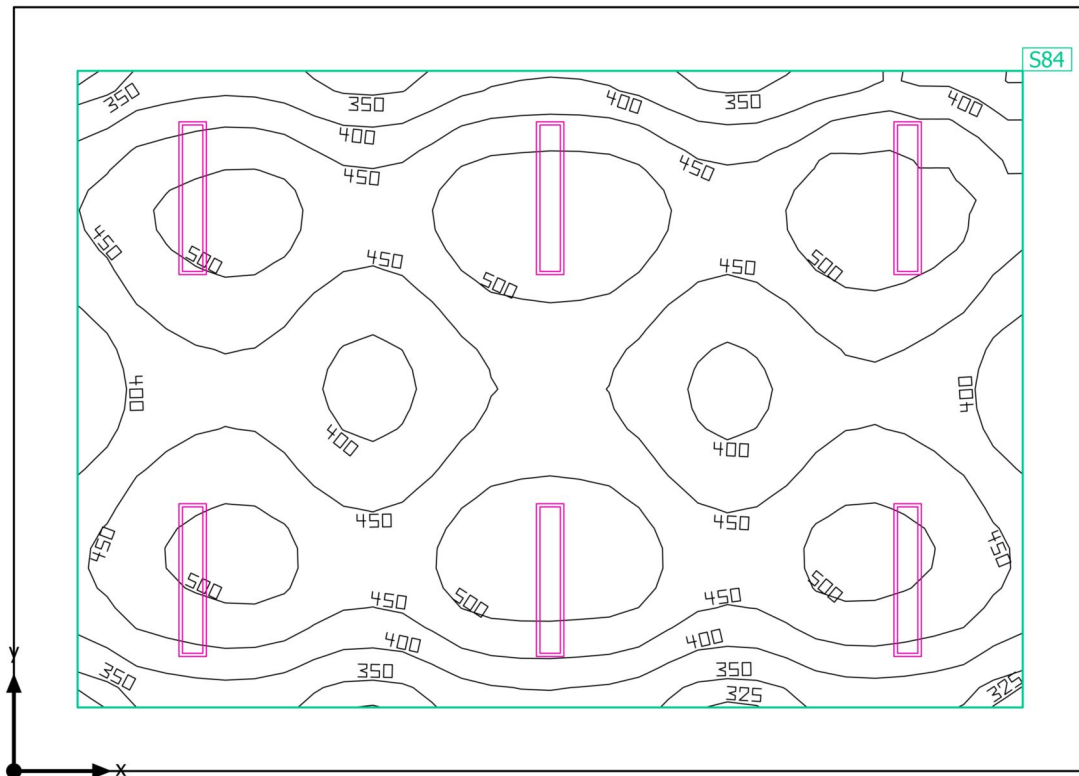
Utilisation profile: Educational premises - Educational buildings, Classroom

Luminaire list

pcs.	Manufacturer	Article No.	Article name	P	Φ	Luminous efficacy
6	BRIGHTSOL	BS02O4K4 0UNL	BS02O4K40UNL 40W 4K 4760lm line IP40 1200mm	40.0 W	4757 lm	118.9 lm/W

Building 1 · 3NP · 308

Summary



Building 1 · 3NP · 308

Summary

Results

	Symbol	Calculated	Target	Check	Index
Workplane	$\bar{E}_{\text{perpendicular}}$	453 lx	≥ 300 lx	✓	S84
	g_1	0.69	-	-	S84
Consumption values	Consumption	[290 - 460] kWh/a	max. 1800 kWh/a	✓	
Lighting power density	Room	4.75 W/m ²	-	-	
		1.05 W/m ² /100 lx	-	-	
	Workplane	6.47 W/m ²	-	-	
		1.43 W/m ² /100 lx	-	-	

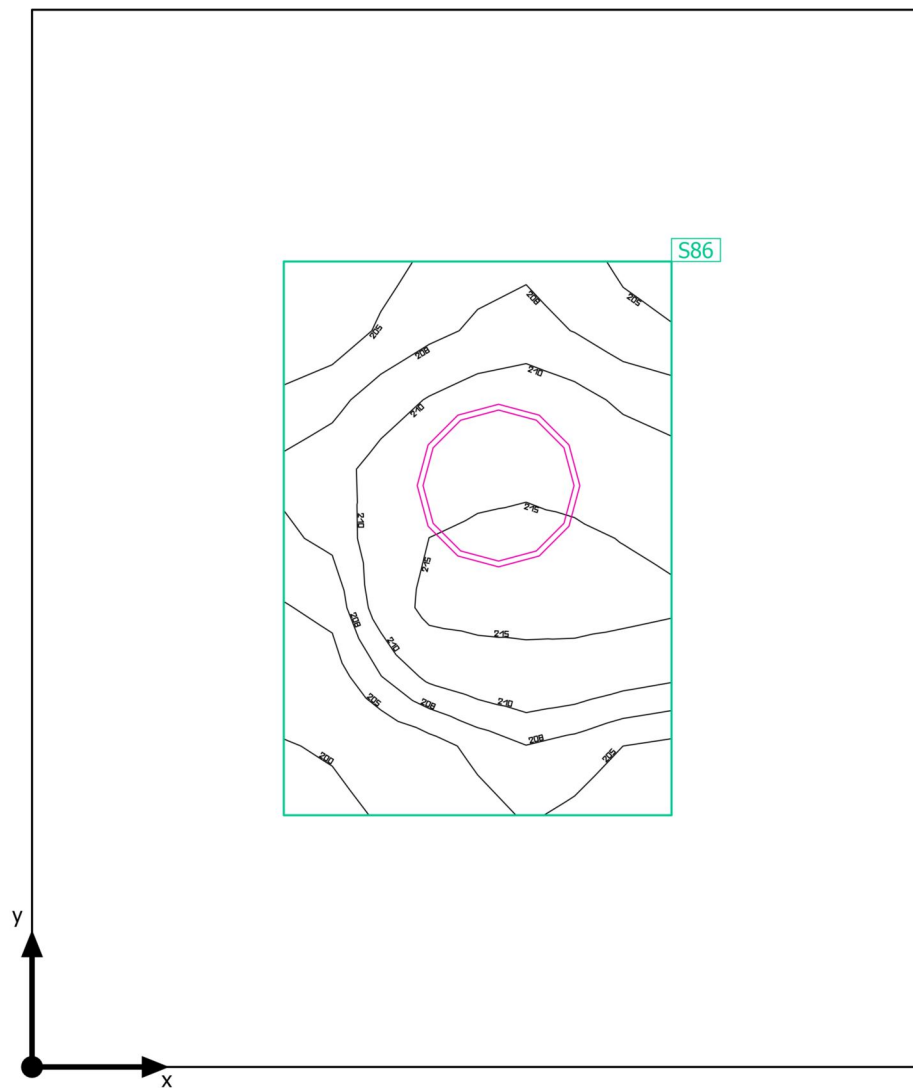
Utilisation profile: Educational premises - Educational buildings, Classroom

Luminaire list

pcs.	Manufacturer	Article No.	Article name	P	Φ	Luminous efficacy
6	BRIGHTSOL	BS02O4K4 0UNL	BS02O4K40UNL 40W 4K 4760lm line IP40 1200mm	40.0 W	4757 lm	118.9 lm/W

Building 1 · 3NP · 309

Summary



Building 1 · 3NP · 309

Summary

Results

	Symbol	Calculated	Target	Check	Index
Workplane	$\bar{E}_{\text{perpendicular}}$	209 lx	≥ 200 lx	✓	S86
	g_1	0.95	-	-	S86
Consumption values	Consumption	[12 - 20] kWh/a	max. 150 kWh/a	✓	
Lighting power density	Room	6.46 W/m ²	-	-	
		3.09 W/m ² /100 lx	-	-	
	Workplane	28.34 W/m ²	-	-	
		13.56 W/m ² /100 lx	-	-	

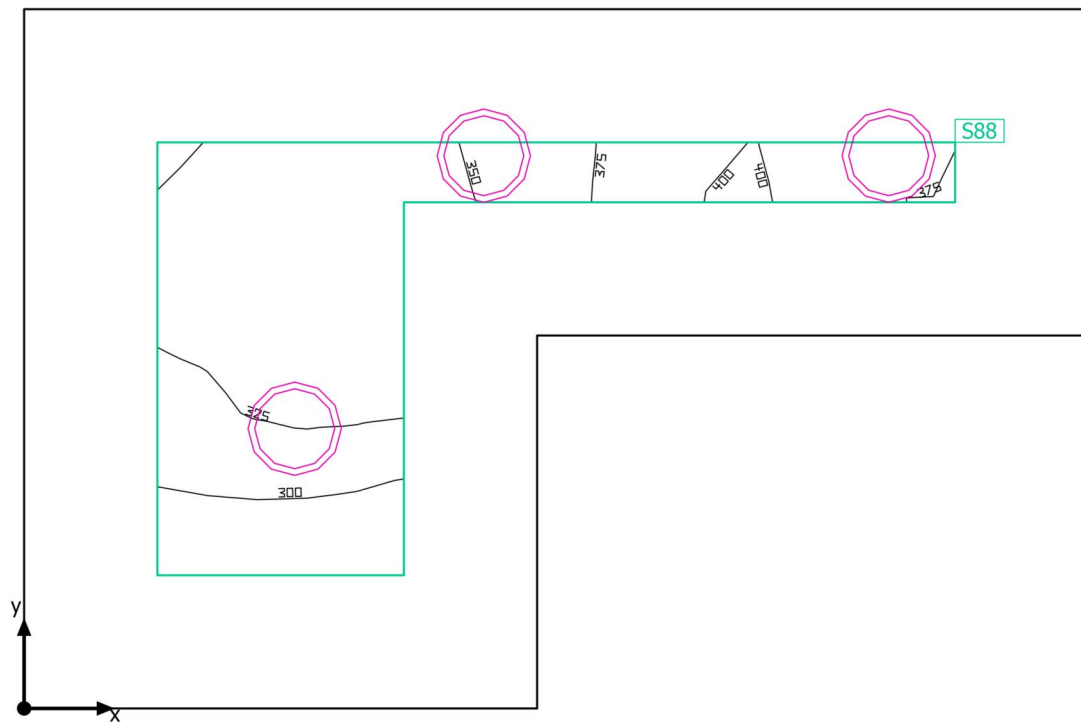
Utilisation profile: General areas inside buildings - Rest, sanitation and first aid rooms, Cloakrooms, washrooms, bathrooms, toilets

Luminaire list

pcs.	Manufacturer	Article No.	Article name	P	Φ	Luminous efficacy
1	BRIGHTSOL	BS04U4K2 4UNK	BS04U4K24UNK 24W 4K 2250lm IP54 D33	24.0 W	2250 lm	93.7 lm/W

Building 1 · 3NP · 310

Summary



Building 1 · 3NP · 310

Summary

Results

	Symbol	Calculated	Target	Check	Index
Workplane	$\bar{E}_{\text{perpendicular}}$	334 lx	≥ 200 lx	✓	S88
	g_1	0.84	-	-	S88
Consumption values	Consumption	[32 - 51] kWh/a	max. 200 kWh/a	✓	
Lighting power density	Room	12.79 W/m ²	-	-	
		3.83 W/m ² /100 lx	-	-	
	Workplane	49.29 W/m ²	-	-	
		14.78 W/m ² /100 lx	-	-	

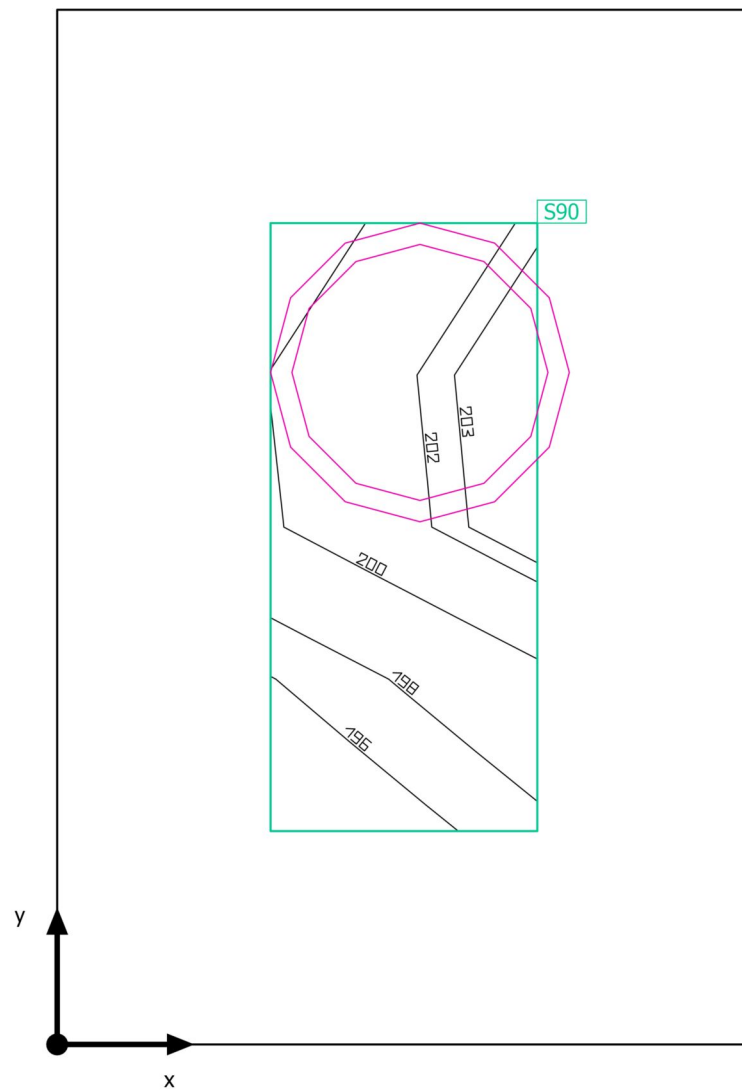
Utilisation profile: General areas inside buildings - Rest, sanitation and first aid rooms, Cloakrooms, washrooms, bathrooms, toilets

Luminaire list

pcs.	Manufacturer	Article No.	Article name	P	Φ	Luminous efficacy
3	BRIGHTSOL	BS02U4K18UN	BS02U4K18UN 20,7W 4K 1700lm IP54 D28	20.7 W	1700 lm	82.1 lm/W

Building 1 · 3NP · 311

Summary



Building 1 · 3NP · 311

Summary

Results

	Symbol	Calculated	Target	Check	Index
Workplane	$\bar{E}_{\text{perpendicular}}$	200 lx	≥ 200 lx	✓	S90
	g_1	0.98	-	-	S90
Consumption values	Consumption	17 kWh/a	max. 50 kWh/a	✓	
Lighting power density	Room	32.83 W/m ²	-	-	
		16.43 W/m ² /100 lx	-	-	
	Workplane	145.26 W/m ²	-	-	
		72.72 W/m ² /100 lx	-	-	

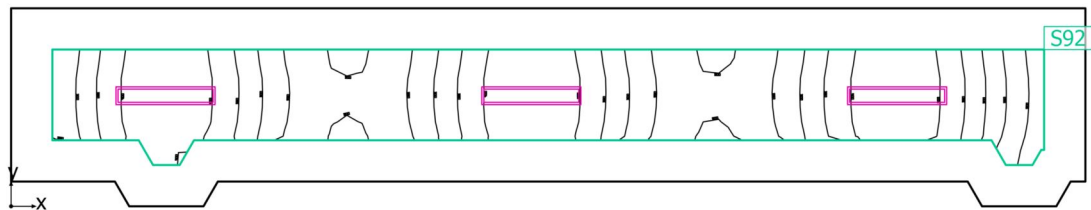
Utilisation profile: General areas inside buildings - Rest, sanitation and first aid rooms, Cloakrooms, washrooms, bathrooms, toilets

Luminaire list

pcs.	Manufacturer	Article No.	Article name	P	Φ	Luminous efficacy
1	BRIGHTSOL	BS02U4K18UN	BS02U4K18UN 20,7W 4K 1700lm IP54 D28	20.7 W	1700 lm	82.1 lm/W

Building 1 · 3NP · chodba 3np

Summary



Building 1 · 3NP · chodba 3np

Summary

Results

	Symbol	Calculated	Target	Check	Index
Workplane	$\bar{E}_{\text{perpendicular}}$	321 lx	≥ 200 lx	✓	S92
	g_1	0.54	-	-	S92
Consumption values	Consumption	[83 - 130] kWh/a	max. 1000 kWh/a	✓	
Lighting power density	Room	4.29 W/m ²	-	-	
		1.34 W/m ² /100 lx	-	-	
	Workplane	8.88 W/m ²	-	-	
		2.77 W/m ² /100 lx	-	-	

Utilisation profile: Educational premises - Educational buildings, Circulation areas, corridors

Luminaire list

pcs.	Manufacturer	Article No.	Article name	P	Φ	Luminous efficacy
3	BRIGHTSOL	BS02O4K4 0UNL	BS02O4K40UNL 40W 4K 4760lm line IP40 1200mm	40.0 W	4757 lm	118.9 lm/W