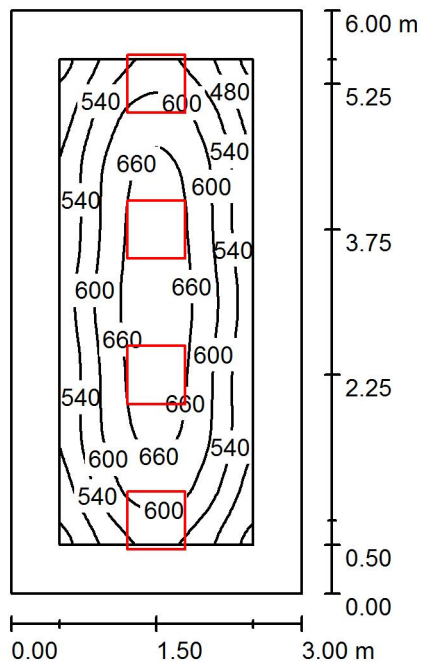


Kancelaria 2,16 / Summary



Height of Room: 2.800 m, Mounting Height: 2.800 m, Maintenance factor: 0.67

Values in Lux, Scale 1:78

Surface	ρ [%]	E_{av} [lx]	E_{min} [lx]	E_{max} [lx]	$u0$
Workplane	/	585	401	701	0.686
Floor	20	405	237	521	0.585
Ceiling	70	95	72	132	0.752
Walls (4)	50	207	89	508	/

Workplane:

Height: 0.750 m
Grid: 64 x 32 Points
Boundary Zone: 0.500 m

UGR

Left Wall
Lower Wall
(CIE, SHR = 1.00.)

Lengthways-

15
17

Across

15
16

to luminaire axis

Illuminance Quotient (according to LG7): Walls / Working Plane: 0.355, Ceiling / Working Plane: 0.163.

Proportion of points with less than 400 lx (for IEQ-7): 0.00%.

Luminaire Parts List

No.	Pieces	Designation (Correction Factor)	Φ (Luminaire) [lm]	Φ (Lamps) [lm]	P [W]
1	4	LEDVANCE GmbH 4058075440432 PL PFM 600 36W 4000K UGR19 4320LM (1.000)	4320	4320	36.0
Total:			17280	17280	144.0

Specific connected load: $8.00 \text{ W/m}^2 = 1.37 \text{ W/m}^2/100 \text{ lx}$ (Ground area: 18.00 m^2)