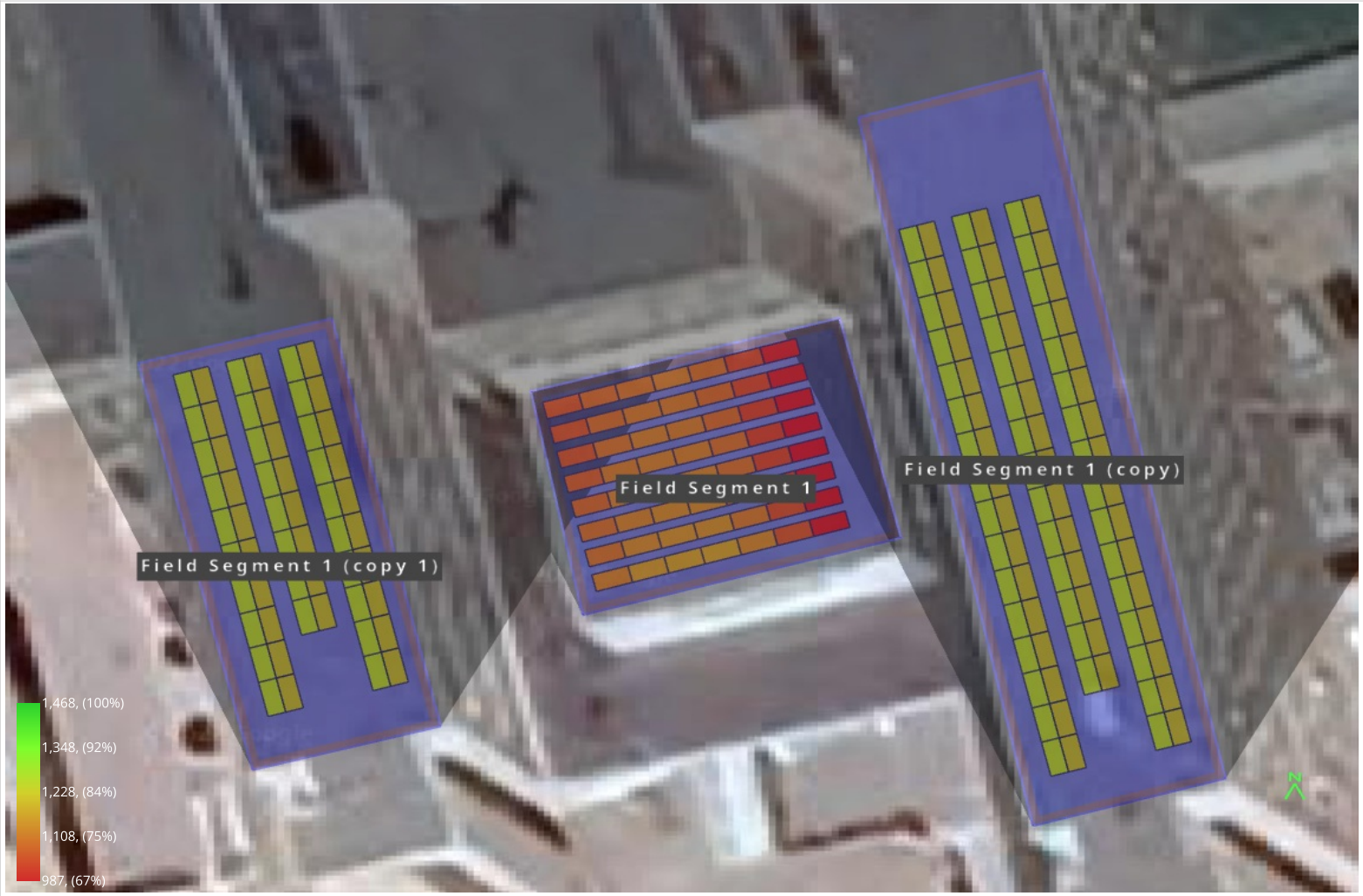


Design 1 Poliklinika Družba, Starohájska 2

Shading Heatmap



Shading by Field Segment

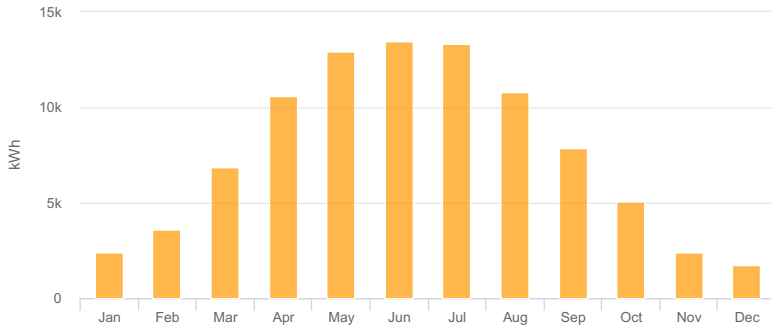
Description	Tilt	Azimuth	Modules	Nameplate	Shaded Irradiance	AC Energy	TOF ²	Solar Access	Avg TSRF ²
Field Segment 1	10.0°	165.0°	56	25.2 kWp	1,083.3kWh/m ²	23.0 MWh ¹	92.0%	80.2%	73.8%
Field Segment 1 (copy)	10.0°	165.3°	92	41.4 kWp	1,229.3kWh/m ²	42.4 MWh ¹	83.7%	100.0%	83.7%
» subarray 1	10.0°	75.3°	46	20.7 kWp	1,205.1kWh/m ²	20.8 MWh ¹	82.1%	100.0%	82.1%
» subarray 2	10.0°	255.3°	46	20.7 kWp	1,253.5kWh/m ²	21.6 MWh ¹	85.4%	100.0%	85.4%
Field Segment 1 (copy 1)	10.0°	165.3°	56	25.2 kWp	1,229.3kWh/m ²	25.8 MWh ¹	83.7%	100.0%	83.7%
» subarray 1	10.0°	75.3°	28	12.6 kWp	1,205.1kWh/m ²	12.7 MWh ¹	82.1%	100.0%	82.1%
» subarray 2	10.0°	255.3°	28	12.6 kWp	1,253.5kWh/m ²	13.1 MWh ¹	85.4%	100.0%	85.4%
Totals, weighted by kWp			204	91.8 kWp	1,189.2kWh/m²	91.2 MWh	86.0%	94.2%	81.0%

¹ approximate, varies based on inverter performance
² based on location Optimal POA Irradiance of 1,468.4kWh/m² at 37.5° tilt and 182.6° azimuth

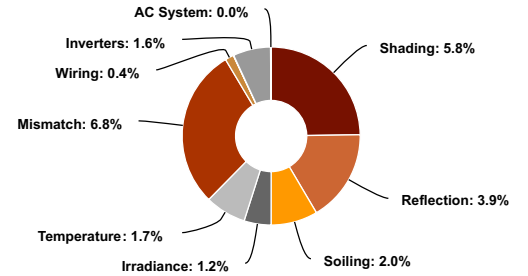
Solar Access by Month

Description	jan	feb	mar	apr	may	jun	jul	aug	sep	oct	nov	dec
Field Segment 1	79%	79%	78%	80%	81%	83%	81%	80%	78%	79%	80%	79%
Field Segment 1 (copy)	100%	100%	100%	100%	100%	100%	100%	100%	100%	100%	100%	100%
Field Segment 1 (copy 1)	100%	100%	100%	100%	100%	100%	100%	100%	100%	100%	100%	100%
Solar Access, weighted by kWp	93.2%	93.2%	93.5%	94.0%	94.7%	95.1%	94.6%	94.3%	93.4%	93.3%	93.5%	93.3%
AC Power (kWh)	2,407.6	3,617.6	6,872.3	10,633.0	12,925.0	13,480.3	13,355.2	10,770.6	7,886.8	5,057.0	2,429.9	1,758.9

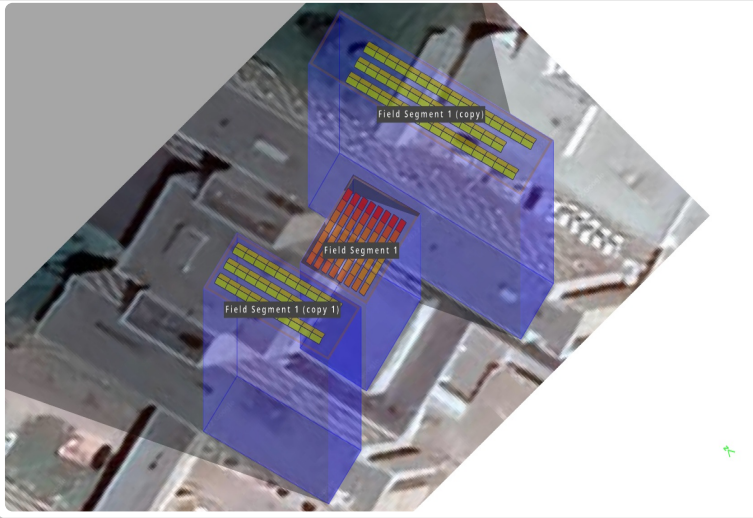
Monthly Production



Sources of System Loss



Southwestern Angle



Southeastern Angle

