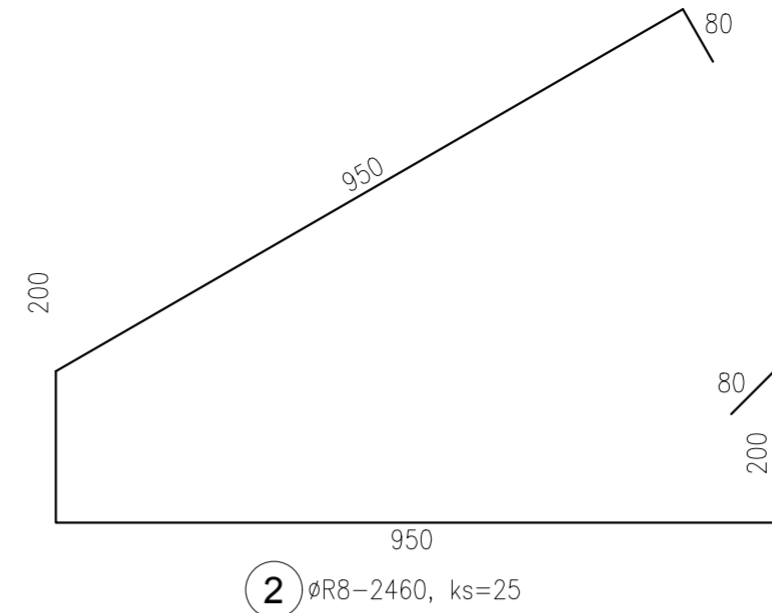
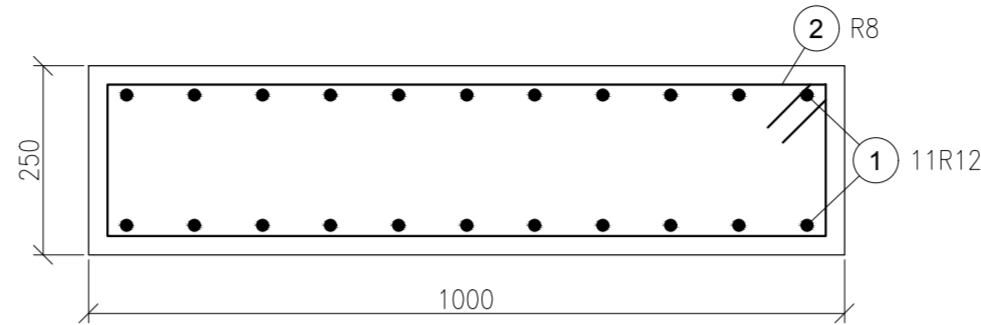
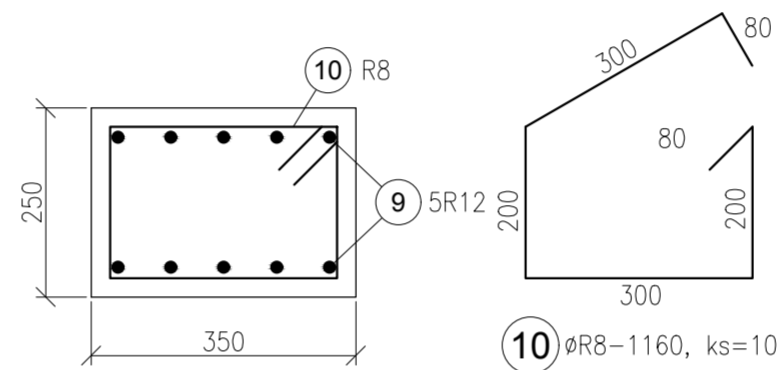
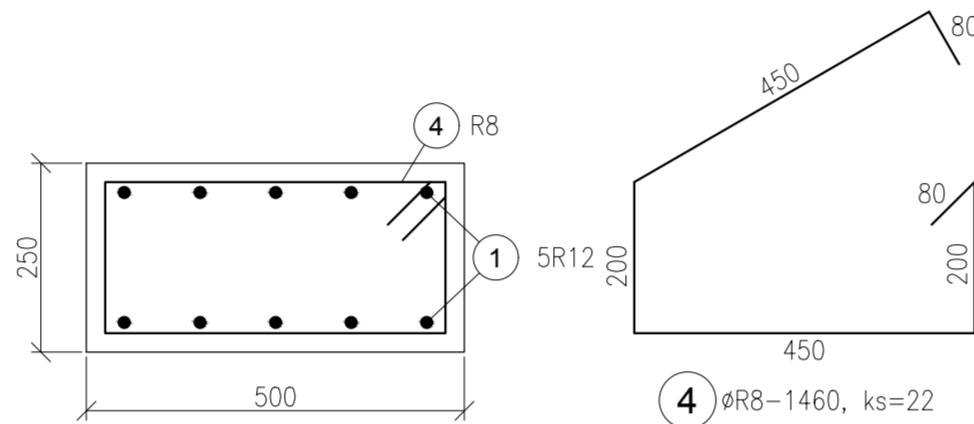


## kotevný blok 1



Technical drawing of a reinforcement cage for a concrete slab. The cage is rectangular with a width of 250 mm and a length of 2100 mm (21x100). It consists of 12 vertical bars (labeled 3 5R12) and 21 horizontal bars (labeled 4 22R8). The total length including lap joints is 2150 mm.



**Kotěvní blok 3**

250

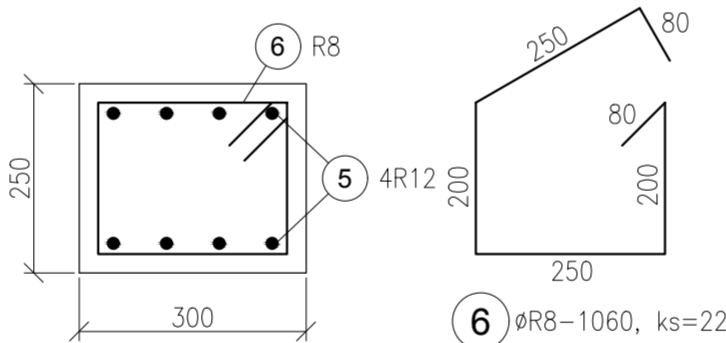
5 4R12

5 4R12

21x100=2100

2150

6 22R8



Technical drawing of a rectangular reinforced concrete slab (slab 10R8) showing dimensions and reinforcement details. The slab is 950 mm wide and 250 mm high. It features 9 top longitudinal bars (5R12) and 9 bottom longitudinal bars (5R12). The bottom bars are spaced at 100 mm (9x100=900 mm). The drawing also shows 10 vertical bars (10R8) and 10 horizontal bars (10R8). The reinforcement is labeled with circled numbers 9 and 10.

**Kotěviny blok 4**

Technical drawing of a concrete slab reinforcement (Kotěviny blok 4). The drawing shows a side view and a top view of the slab.

**Side View:**

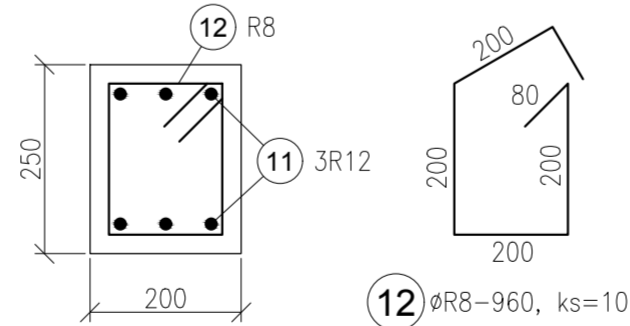
- Overall width: 250
- Overall length: 1350
- Reinforcement bars: 14R8 (8) and 3R12 (7)
- Bar spacing: 13x100=1300

**Top View:**

- Overall width: 200
- Overall length: 200
- Reinforcement bars: 8R (8) and 3R12 (7)

**Detail View:**

- Overall width: 200
- Overall length: 200
- Reinforcement bars: 8R (8) and 3R12 (7)



Technical drawing of a rectangular reinforced concrete slab. The drawing shows a plan view with dimensions 9x100=900 (width) and 950 (length). The slab is reinforced with 11 bars of diameter 12mm (11 ØR12) and 11 bars of diameter 12mm (11 5R12). The slab is supported by a wall on the left and a column on the right. The wall is 250mm thick. The column is 100mm wide. The slab is 100mm thick. The drawing also shows a cross-section of the slab, indicating the reinforcement bars and their spacing.


POL.	Ø	DLŽKA (m)	POČET KUSOV	DLŽKA CELKOV (m)		POL.	Ø	DLŽKA (m)	POČET KUSOV	DLŽKA CELKOV (m)	
				10 505 R						10 505 R	
				ØR8	ØR12					ØR8	ØR12
1	R12	2,700	22		59,40	9	R12	1,100	10		11,00
2	R8	2,460	25	61,50		10	R8	1,160	10	11,60	
3	R12	2,300	10		23,00	11	R12	1,100	6		6,60
4	R8	1,460	22	32,12		12	R8	0,960	10	9,60	
5	R12	2,300	8		18,40				m	151,58	127,40
6	R8	1,060	22	23,32					kg/m	0,395	0,888
7	R12	1,500	6		9,00				kg	59,87	113,13
8	R8	0,960	14	13,44					kg		173,00




Stavebné výrobky a materiály môžu byť nahradené ekvivalentným výrobkom a materiálom s porovnateľnými parametrami.

názov : BBSK - NOVÉ VYUŽITIE AREÁLU BÝVALEJ SOŠ  
NA ULICI ŠPITÁLSKEJ V BANSKEJ ŠTIAVNICI -  
1. ZARIADENIE SOCIÁLNYCH SLUŽIEB

celok :

I. STAVBA

žiadateľ - stavebník :  BANSKOBYSTRICKÝ SAMOSPRÁVNÝ KRAJ Námestie SNP 23 974 01 Banská Bystrica, Slovenská Republika		objednávateľ :  DOMOV MÁRIE Špitálska 3 969 01 Banská Štiavnica		
miesto stavby : Špitálska 3 969 01 Banská Štiavnica				
katastrálne územie : Banská Štiavnica				
stupeň dokumentácie : dokumentácia na stavebné povolenie s náležitostami dokumentácie na realizáciu stavby	 			

hlavný inžinier projektu :	Ing. Viasta Martinická	<i>hoxie.</i>	zhotoviteľ :	
hlavný architekt :	Ing. arch. Norbert Gubka	<i>BP</i>	 <b>BANSKÉ PROJEKTY, s.r.o.</b> Miletičova 23 821 09 Bratislava	 
autorizačne overil :	Ing. Viasta Martinická	<i>hoxie.</i>		
vypracoval :	Ing. Miloš Bednárík	<i>Bednarič</i>		