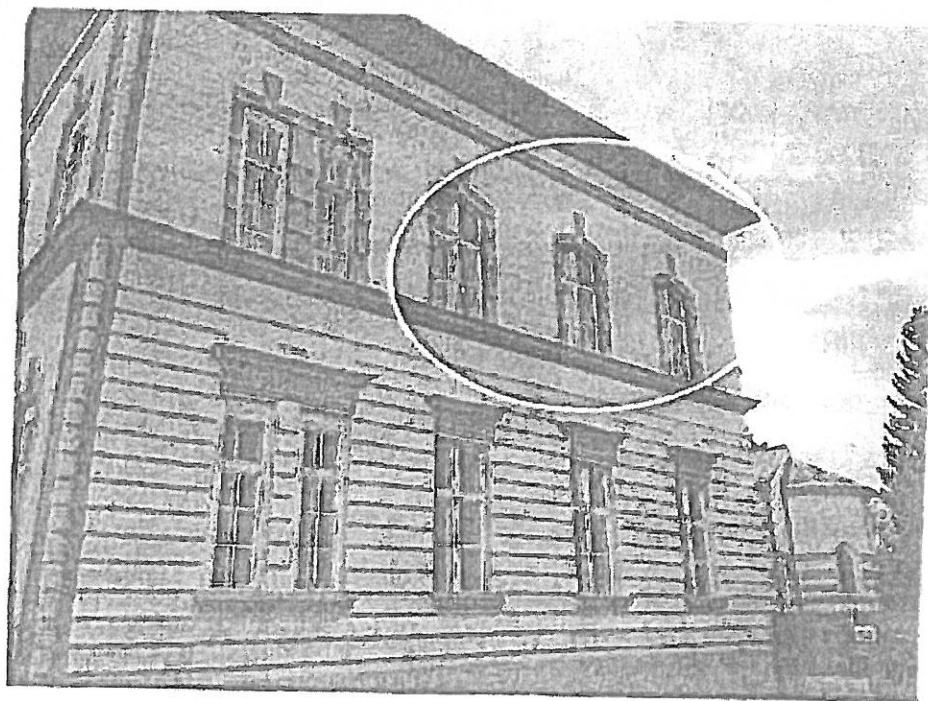
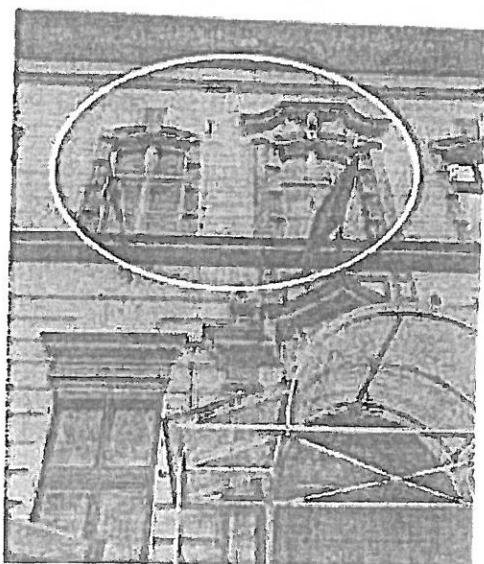


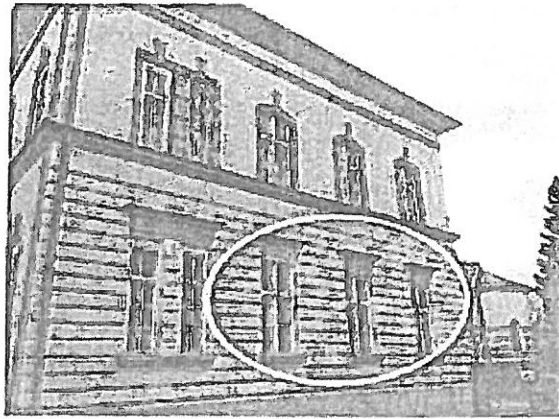
Príloha č.4 - Fotodokumentácia



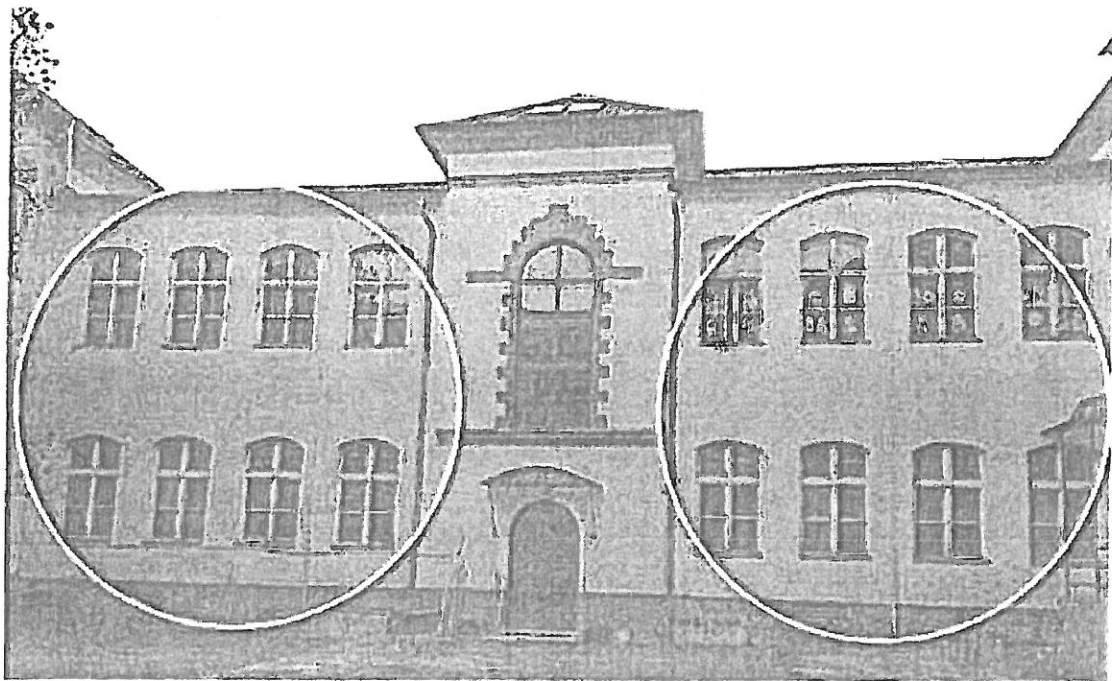
3 ks 140x250 4- kridlové oblúkové (učebňa tercia), drevo

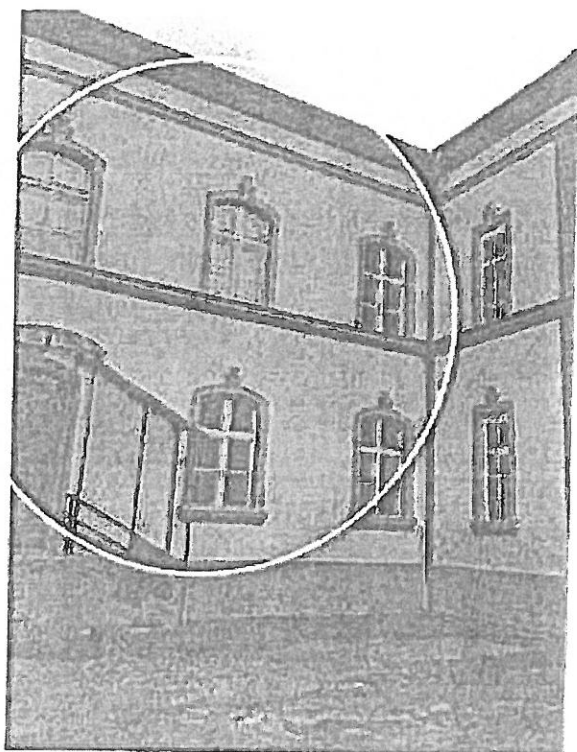


2 ks 140x250 4- kridlové oblúkové (čelná fasáda nad vchodom do budovy), drevo



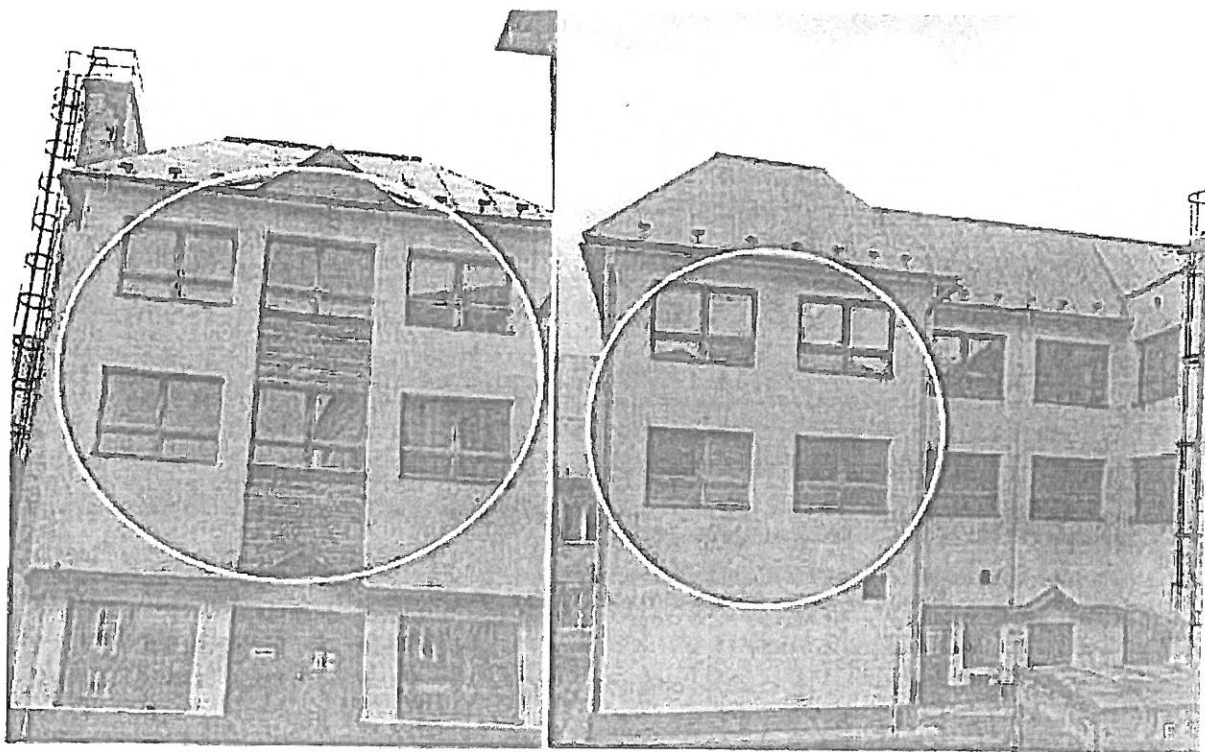
5 ks 140x250 4-křídlové (gymnastická telocvična + posilňovňa), drevo

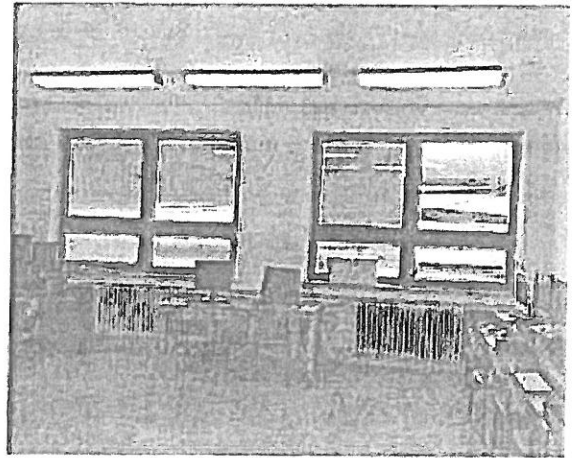
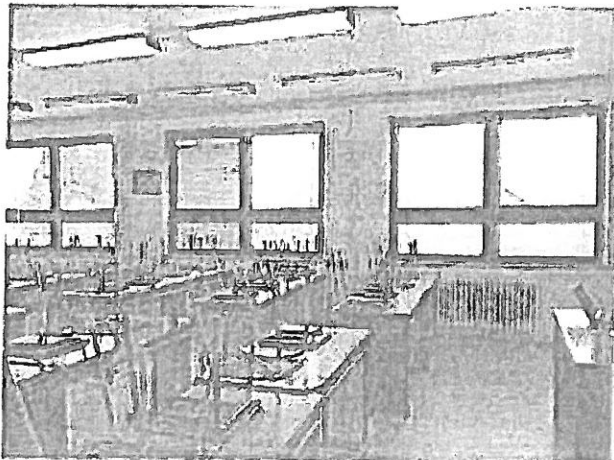




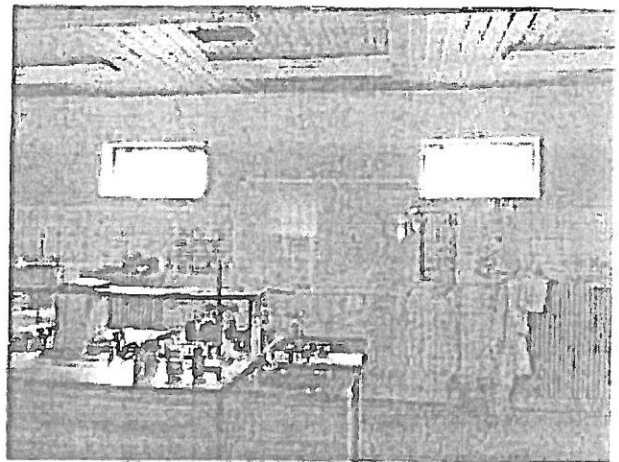
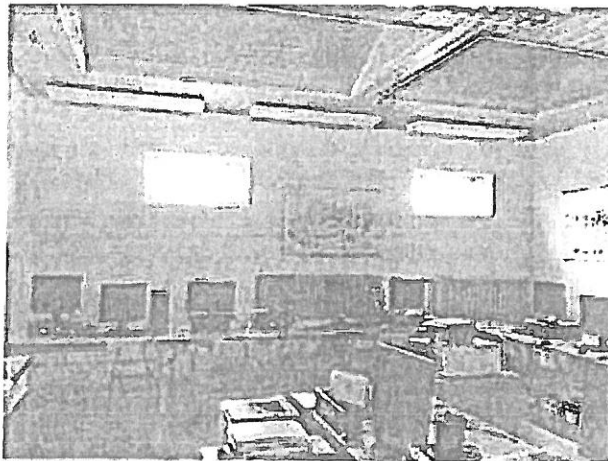
21 ks 4-křídlové oblúkové 160x250, drevo

(učebňa č.40, prima, sekunda, Jazykovka angličtiny  
č.1, chodba horné a dolné poschodie)

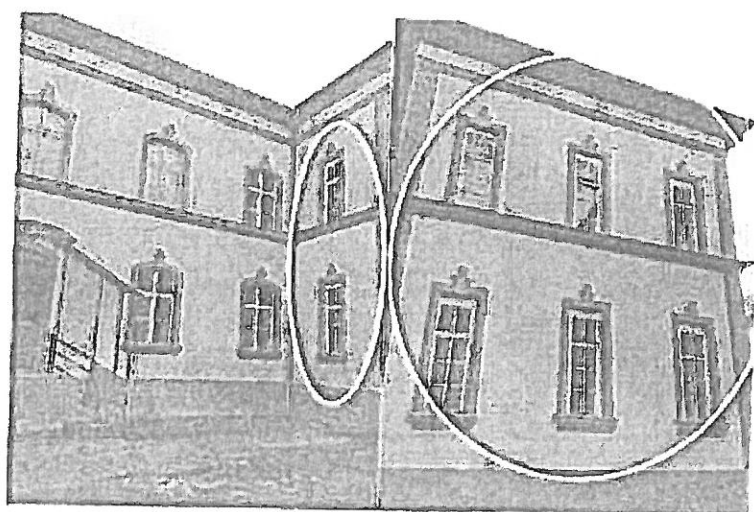




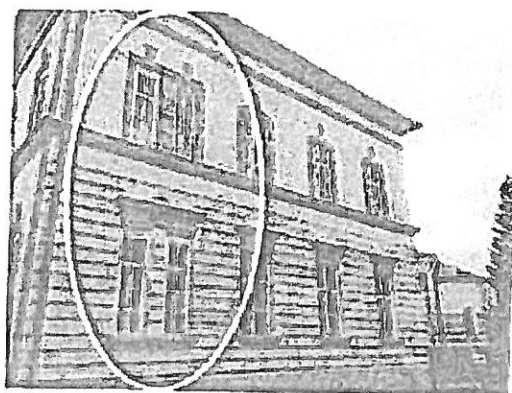
**16 ks okno 4-krídlové 235x175 (učebňa kvarta, učebňa HUV, učebňa INF1, učebňa FYZ), plast**



**4 ks okno 115x120 (aj zväčšenie stavebného otvoru – učebňa INF2, laboratórium chémie), plast**



**8 ks okno 2-kridlove 90x250 (WC prízemie, 1. poschodie), drevo**



**4 ks okno 2-kridlove 80x250 (WC prízemie, 1. poschodie), drevo**