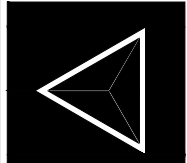

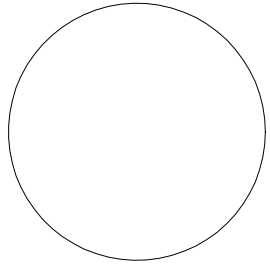
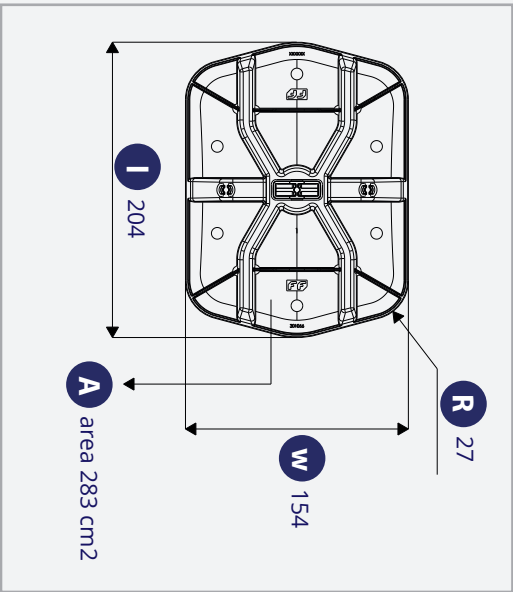


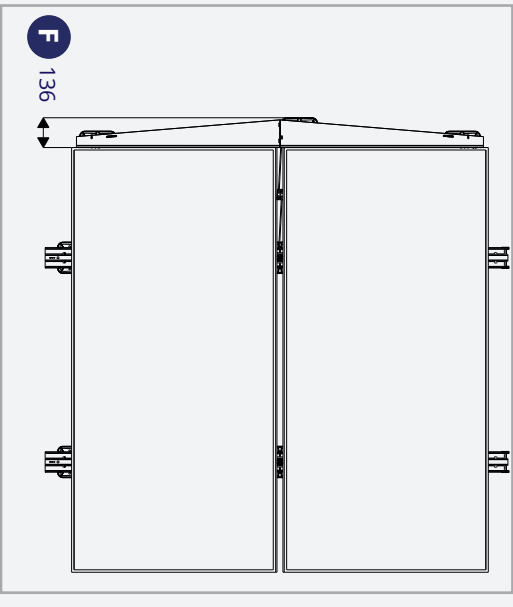
NÁZOV PROJEKTU	KULTÚRNE STREDISKO A KNIŽNICA ŽARNOVICKÁ - RAČA						
MIESTO STAVBY	Žarnovická 9582/7, 831 06 Bratislava hlavný stavebný objekt parcela č. : 513/19 inžinierske siete parcely č. 513/5, 513/20, 513/21						
STAVEBNÍK	Mestská časť Bratislava - Rača Kubačova 21, 831 06 Bratislava - mestská časť Rača						
GENERÁLNY PROJEKTANT	young.s architekti s.r.o. Béžová 3960/8 851 07 Bratislava - Petržalka					 YOUNG.s architekti	
AUTORI PROJEKTU	Ing. arch. Jozef Bátor, PhD. Ing. arch. Tomáš Medlen Ing. arch. Michaela Perejdová						
SPRACOVATEĽ PROFESIE	EXTELI-PROJEKT, s.r.o. Račianska 78 83102 Bratislava						
ZODPOVEDNÝ PROJEKTANT	Ing. Ján Kišela						
KONTROLOVAL	Ing. Marek Gešnábel						
VYPRACOVAL	Bc. Illia Lazarenko						
STAVEBNÝ OBJEKT	PS01					MIERKA	1 : -
ETAPA	I. ETAPA					FORMÁT	1 x A4
ČASŤ PD	PS01 - ELEKTROINŠTALÁCIE-FVE					ROZMER	210 x 297
OBSAH VÝKRESU	KONŠTRUKCIA					DÁTUM	06/2025
ČÍSLO PROJEKTU	KÓD PROJEKTU	STUPEŇ PD	KÓD PROFESIE	STAVEBNÝ OBJEKT	ČÍSLO VÝKRESU	REVÍZIA	PARÉ
044	KCR	RP	E-1.1.6	PS01	004	00	

SYSTEM DIMENSIONS OVERVIEW (mm)

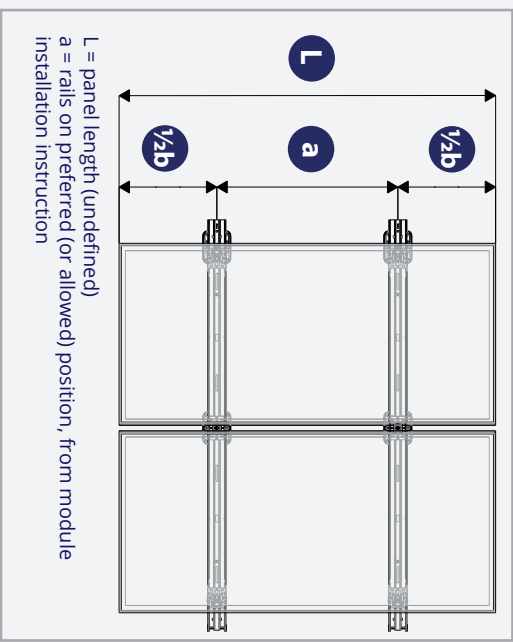
ROOF SUPPORT



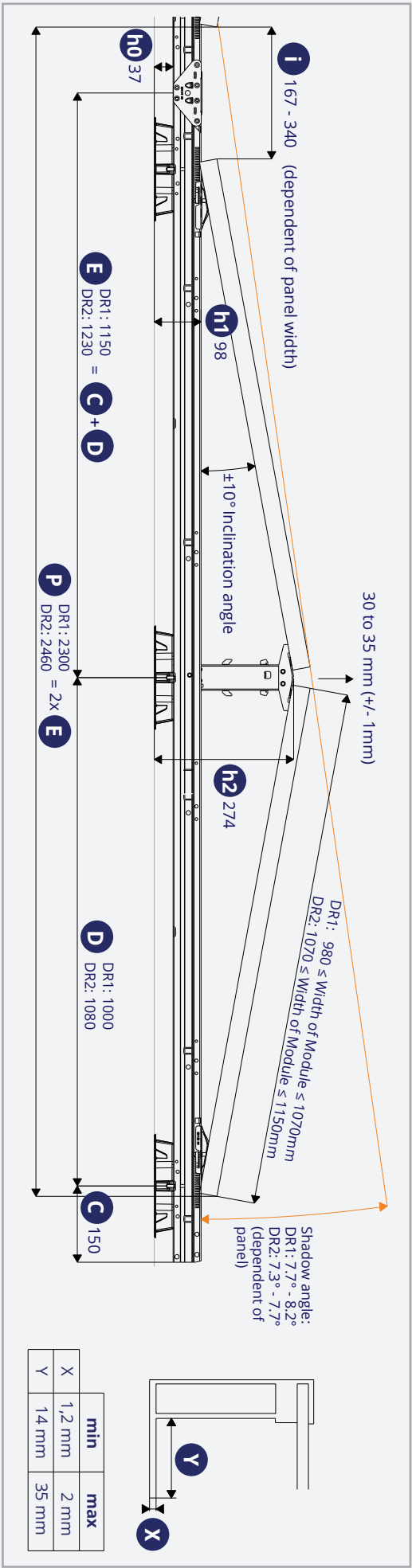
WINNDEFLECTOR



FIELD



SIDE VIEW



Item.no. 1009100

FlatFix Wave Plus DR1

Max. panel width:
990 - 1070mm

Max. panel length:
2250mm

FlatFix Wave Dual Unit 4P
Max. panel width:
990 - 1070mm (DR1)



Material: Steel Magnelis coated
PP
Weight (kg): 8.9
Intrastat: 73089098
Barcode: 8719925884627

Item.no. 1009101

FlatFix Wave Dual Start unit 4P
Max. panel width:
990 - 1070mm (DR1)



Material: Steel Magnelis coated
PP
Weight: 8.9
Intrastat: 73089098
Barcode: 8719925884634

Item.no. 1009102

FlatFix Wave Dual unit 2P
Max. panel width:
990 - 1070mm (DR1)



Material: Steel Magnelis coated
PP
Weight: 4.45
Intrastat: 73089098
Barcode: 8719925884641

Item.no. 1009123

FlatFix Wave Ballast bracket



Material: Steel
Weight: 0.13
Intrastat: 73262000
Barcode: 8719925884580

Item.no. 1009150

FlatFix Wave Plus DR2

Max. panel width:
1070 - 1149mm

Max. panel length:
2400mm

FlatFix Wave Dual Unit 4P
Max. panel width:
1070 - 1149mm (DR2)



Material: Steel Magnelis coated
Weight: 9.173
Intrastat: 73089098
Barcode: 8719925885365

Item.no. 1009151

FlatFix Wave Dual Start unit 4P
Max. panel width:
1070 - 1149mm (DR2)



Material: Steel Magnelis coated
Weight: 9.05
Intrastat: 73089098
Barcode: 8719925885372

Item.no. 1009152

FlatFix Wave Dual Unit 2P
Max. panel width:
1070 - 1149mm (DR2)



Material: Steel Magnelis coated
PP
Weight: 4.59
Intrastat: 73089098
Barcode: 8719925885389

Item.no. 1009124

FlatFix Wave Cable bracket



Material: Steel
Weight: 0.027
Intrastat: 73089098
Barcode: 8719925884665

FlatFix Wave Stabilizer

FlatFix Wave Stabilizer 2900

Item.no. 1009110
Weight: 3.57
Intrastat: 73262000
Barcode: 8719925884535

FlatFix Wave Stabilizer 4000

Item.no. 1009114
Weight: 4.93
Intrastat: 73262000
Barcode: 8719925885648



FlatFix Wave Stabilizer 3530

Item.no. 1009111
Weight: 4.35
Intrastat: 73262000
Barcode: 8719925884542

Material: Steel Magnelis coated

Item.no. 1009103

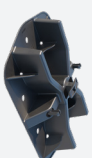
FlatFix Wave Wind deflector kit



Material: Steel Magnelis coated
PP
Weight: 3.062
Intrastat: 73089098
Barcode: 8719925884658

Item.no. 1009120

FlatFix Wave Base plate



Material: PP
Weight: 0.114
Intrastat: 39269097
Barcode: 8719925884511

Item.no. 1009122

FlatFix Wave Connector pin



Material: Steel
Weight: 0.245
Intrastat: 73262000
Barcode: 8719925884573